

# Proposed Cabbage Tree Road Sand Quarry

Newsletter Edition 1 – July 2016

Welcome to Edition 1 of the Cabbage Tree Road Sand Quarry Newsletter. Williamtown Sand is taking the opportunity to provide this update to our local community, the public and various government departments following the exhibition of the project's environmental impact statement earlier this year. This newsletter is the first in a series of planned updates about the project as we continue our progress in planning for the development of this project.

Since the EIS was exhibited and the submissions received, Williamtown Sand has been working to optimise the project in terms of both the available sand resource, the protection of vegetation communities and fauna populations and the amenity for our surrounding community and road users and we are pleased to be able to communicate these plans with you in this and future newsletters.

## THE APPROVAL PROCESS

In NSW, assessment of potential environmental and social impacts that may arise from planned projects are assessed under the Environmental Planning and Assessment Act 1979. The Cabbage Tree Road project was assessed as a state significant development project under the Act and an environmental impact statement (EIS) was prepared. An EIS usually contains:

- A description of the proposed development.
- An outline of public and stakeholder consultation undertaken during investigations and the issues raised.
- A description of the existing environment that may be affected.
- Predictions of significant environmental and social impacts of the proposal and relevant alternatives.
- Proposed measures to avoid, minimise or manage adverse environmental and social impacts.
- A proposed program for monitoring and managing environmental and social impacts during project implementation.

The EIS was submitted in November 2015 and exhibited on 4 December 2015 for around 10 weeks. The EIS garnered submissions from our local community, the public and various government departments and Williamtown Sand would like to thank those who have taken the time and interest in the project to share their views.

Williamtown Sand is working through these submissions to provide responses to the issues raised and is looking forward to sharing the work completed to optimise the project during this phase with the community. We expect to be able to complete our responses to submissions around the end of August 2016 and lodge our responses to the Department of Planning and Environment.

Figure 1 provides the current status and timeline for the Cabbage Tree Road project.



Figure 1  
Project status

## PROJECT OPTIMISATION

Based on the responses to the public exhibition and agency review of the EIS documentation, changes were made to the project to reduce its potential impact and optimise its configuration.

### Efficiency Improvements

- Change to electric processing (stackers, screens and classifier) that will be predominantly powered by mains power, reducing the reliance on diesel.
- Change of the predominant extraction method to portable electric conveyors fed by front end loaders. This represents a change from the dozer, loader and articulated truck fleet that was planned, however, this fleet may be used as back up for when conveyors are under maintenance. This will reduce noise levels from the operation and provide a more efficient operation.

### Amenity

- Recognising that noise was a concern for our neighbours, the proposed tub grinder has been removed from operations. This has the added benefit of maintaining the quality of vegetation stockpiled for rehabilitation after sand extraction with the seed bank better retained in woody stockpiles.
- An increase in buffers to some adjoining properties, further separating planned activities from neighbouring residences considerably beyond minimum requirements.
- Limiting extraction extents along Cabbage Tree Rd frontage to retain existing landform and vegetation opposed to constructing noise mounds.

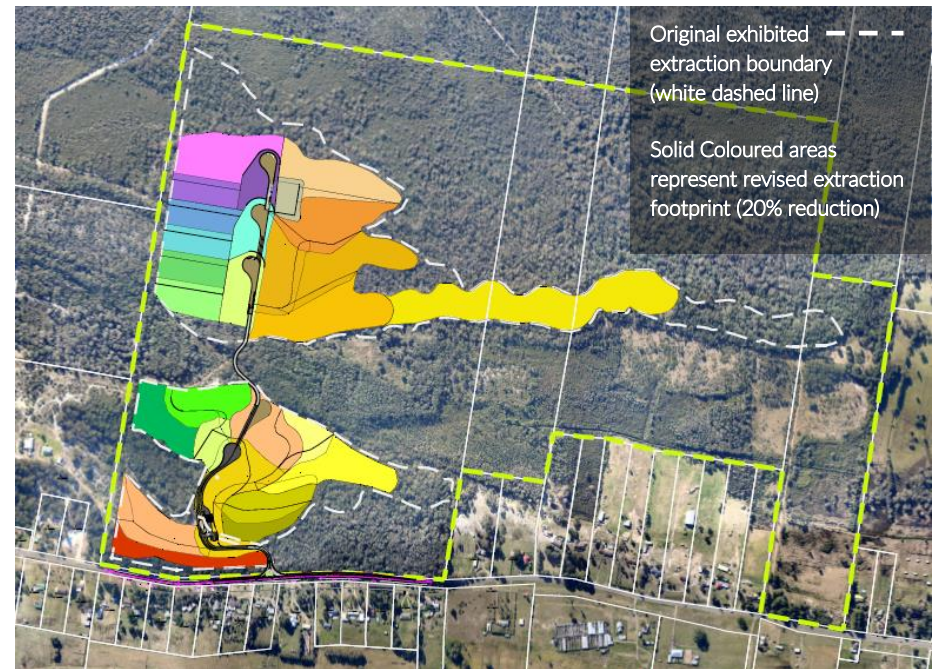
### Traffic

- Detailed review of traffic safety concerns and revised treatments to improve and provide safe operations along the frontage of the proposed development.

- Incorporation of RMS and Council's feedback and comments into revised treatments..

### Habitat and Rehabilitation

- Reduction in the footprint of the total quarry extraction area of over 20% based on a range of additional avoidance and optimisation measures.



- Avoidance of high density habitat areas based on additional field data collection.
- Extraction and rehabilitation sequencing that will limit the area exposed during operations to active quarrying blocks. Rehabilitation will commence in each extraction block once quarrying is completed in each respective block, meaning at any one time, the active blocks for sand extraction will

be limited to only what is necessary. This will result in a progressive rehabilitation plan for the life of the project.

- Rehabilitation of the extraction area to a native ecosystem, equivalent to or better than existing conditions.
- An increase in buffers to some adjoining properties providing increased habitat corridor widths.

## Health

- Additional studies, research, laboratory testing and modeling into air, noise and groundwater concerns have been undertaken and will be presented in detail in our formal response to submissions.

## COMMUNITY AND STAKEHOLDER ENGAGEMENT

Participation and input from the community is an essential part of project planning and Williamtown Sand is committed to meaningful engagement and productive partnerships with our local community. Feedback received from interested community members and local groups has been important to the development of the Cabbage Tree Road project and we are excited to be able to communicate its ongoing development. The continued input from the project's stakeholders will be integral to delivering a successful development that considers matters important to neighboring communities.

Williamtown Sand will continue to provide updates through various channels including:

- Newsletters.
- Planned meetings.
- Access to project personnel via the email address and telephone numbers provided in this newsletter.

## Upcoming Events

During July and August, representatives from Williamtown Sand will be able to discuss your interest in the Cabbage Tree Road project and the EIS and provide us the opportunity to understand your views on the proposed development.

Williamtown Sand is pleased to invite members of the community to the Elizabeth Room at the Sir Francis Drake, 2259 Pacific Highway, Heatherbrae on Monday, 1 August 2016 commencing 5.30pm to 8.30pm for a light supper and presentation to provide an update on Williamtown Sand's plans.

To register your interest in attending this event ... Registrations close 3pm, Friday 29 July 2016

## CONTACT US

### FOR MORE INFORMATION ON THE CABBAGE TREE ROAD PROJECT

Any questions or feedback relating to the Cabbage Tree Road Project, Williamtown Sand's, current activities or future plans can be directed to:

Jonathan Berry

P: 024949 5200

M: 0499 564 597

E: [jberry@kleinfelder.com](mailto:jberry@kleinfelder.com)

## ABOUT WILLIAMTOWN SAND

Williamtown Sand Syndicate Pty Ltd, the proponent of the project is a Newcastle based privately funded investment business utilising local employee's, contractor, consultants, resources and suppliers of services to undertake this project.