

Williamtown Sand Syndicate (WSS) Cabbage Tree Road Sand Quarry Community Consultative Committee Meeting

15 March 2022

9:05-9:45am

Mercure Newcastle Airport

Meeting Number:	7 th Meeting	Type of meeting:	General
Chairperson:	John Turner - JT	Note taker:	Jonathan Berry
Attendees:	Wayne Sampson (Resident) – WS Stephen Kuehn (Resident) – SK Shirley Davis (Resident) – SD Barry Davis (Resident) – BD John Simpson (Hunter Water Representative) – JS Paul Hardes (Resident) – PH Darren Williams (WSS) – DW Jonathan Berry (Wedgetail Project Consulting) – JB Sean Pennell (WSS / Newcastle Sand) – SP		
Apologies:	Peter West (Resident) – PW Greg Callaghan (Resident) – GC		
Observers:	None		
Meeting Open:	9:05am		

Minutes

Agenda item: 1	Apologies	Presenter:	John Turner
-----------------------	------------------	-------------------	-------------

Discussion:

Greg Callaghan (Resident) – GC
Peter West (Resident) – PW

Agenda item: 2	Declaration of Pecuniary Interest	Presenter:	NA
-----------------------	--	-------------------	----

Discussion:

John Turner (Chairperson) – Paid for service by WSS.
Wayne Sampson (Resident) – Deed with WSS.
Jonathan Berry (Wedgetail Project Consulting) – Consultant employed by WSS.
John Simpson (Hunter Water Representative)
Barry Davis (Resident) – Nil.
Shirley Davis (Resident) – Nil.
Greg Callaghan (Resident) – Deed with WSS
Paul Hardes (Resident) – Deed with WSS
Stephen Kuehn (Resident) – Deed with WSS

Sean Pennell (WSS / Newcastle Sand) – Quarry Manager

Darren Williams (WSS) – Quarry owner.

Agenda item: 3 Minutes to be adopted **Presenter:** John Turner

Discussion:

Minutes from the last meeting were noted.

Minutes moved by WS. Minutes seconded by SK. All Agree.

Agenda item: 4 Business Arising from Previous Minutes **Presenter:** JT

- Response to issues raised or provision of additional information requested;

- See presentation and below.

SD – What is quarry doing to remove more sand from truck tyres (Tabled Question for Page 3 of Presentation).

As noted in presentation, wheel wash, v-cut on roadside to allow sand to move off road, increasing bitumen extent.

Agenda item: 5 Correspondence **Presenter:** John Turner

- See presentation and below.

Agenda item: 6 Proponents reports & overview of activities, including; **Presenter:** Jonathan Berry

- Progress of the project
- Monitoring & environmental performances
- Community complaints & responses to these complaints
- Information provided to the community and any feedback

JB – Gave presentation of slides.

Page 5 Complaints Register

JB – One complaint received during the period with regard to two trucks using a neighbouring properties driveway to turn around, property owner provided a photograph of the vehicles, one was a customer of the quarry, the other wasn't. The customer was contacted and advised not to repeat this, with penalty of suspension from the site.

SD – Tabled Question: The complaints register on the website is September version, where is the updated one?

JB - [Post meeting check – update had not loaded correctly, now loaded as of 12:30pm on 15/03/2022].

SD – Tabled Question: Does the quarry include DPE complaints on register?

JB – [Post meeting, Yes, depends on how complaint received, if it's a complaint from residents relayed to the quarry it is included, otherwise its received as correspondence rather than a complaint.]

Page 6 Regulatory Correspondence

SD – Tabled Question: When will recommendations from DPE be completed?

JB – Is that Audit Actions?

SD – Yes

JB – Some of these are complete, others are in progress.

JB – If in relation to actions on Page 6 of the presentation, the majority of these are completed, fencing contractor has been engaged and work expected to occur in the next month.

JS – What sort of fence? Assume this is not of a type to restrict fauna movements?

DW – A 2-3 strand plain wire fence, intended to avoid an operator going outside resource area.

JB – Only required in some areas where there is potential for incidental movement outside the resource area, in most areas the frog fence would limit access.

JS – What is the current depth control system?

DW – Loader has a GPS, and where the excavator is used a hand held system is available at the quarry at all times to check levels.

JS – No issues with current system?

DW – No, none at all.

Page 7 Recent Updates

SD – Tabled Question: Can the Quarry put the Groundwater Specialist Report on the website?

JB – Yes, this will be loaded on the website when DPE approve it. The findings of this report will be similar to the existing one that is currently on the website.

Page 11 Truck Movements

SD – Tabled Question: Can the quarry add the maximum actual truck movements per hour each day to the traffic movements table?

JB – Maximum movements per hour are fixed by the computer and weighbridge system, no additional tickets will be created for a truck to register a sale.

DW – What's the reason behind this question?

SD – Sometimes it seems that there are constant trucks coming out of the quarry, other times there is none.

DW – Our conditions require no more than 10 per hour, sometimes this could be 10 in 20 minutes and none for the next 40 minutes, so sometimes it might seem as though there are busy periods, but the computer / weighbridge system limits trucks.

Page 17 Environmental Monitoring - Water

SD – Tabled Question: Does the Wash Plant still use town water?

DW – Yes.

Page 22 Batters Photograph and comments arising

SD – How far does the sand go that is visible in the picture?

JB – Sand largely gone from road surface before acceleration lane.

DW – Will vary depending on weather, when wet, the sand tends to be stickier and travels further along the road.

DW – Probably due for another sweep by the contractor.

DW – Wheel wash and more bitumen should improve this, the Cabbage Tree Road side of the wheel wash / weighbridge should remain a clean area.

BD – Not all contractors have got their load covered.

DW – Have numerous signs and advise trucks regularly.

BD – What is the speed limit of trucks leaving?

DW – The design of the road was to enable trucks to be at about 80km before they merge.

BD – Some trucks don't give way and just push out onto road.

JT – This is an issue for Council / Roads and Maritime Services or the Police, as previously discussed, intersection has been designed to meet RMS requirements.

Page 29 Sector 7 Rehabilitation Photograph

SK – Will these plants be watered?

DW – If needed they will be by water cart.

JB – Seeding should require less watering, if tube stock are planted (if the seeded plants have not succeeded), watering may be needed.

Agenda item: 7 Other Agenda Items

Presenter: John Turner

Discussion:

JT – There were no other agenda items received.

Agenda item: 8 General Business

Presenter: John Turner

Discussion:

JT – Is there any general business?

Tabled Questions from SD have been included in the above section.

All – No business.

Action items	Person responsible	Deadline
✓ SD – Can someone please drop off a copy of the minutes to my letter box?	SP will drop of a copy	When completed
✓		

Agenda item: 9 Next Meeting

Presenter: John Turner

Discussion:

JT – The meeting is now closed 9:45am, the next meeting to be advised for near June – to be advised.

Action items	Person responsible	Deadline
None.		

Other Information

- Minutes to be provided as draft in the next week.
- Committee members have one week to provide feedback on the minutes to the Chairperson.
- Within two weeks of receiving feedback the minutes will be finalized and distributed to members and placed on the website.

Meeting Close:

9:45 am



NEWCASTLE **SAND**

Community Consultative Committee Update

Project update for the period **December 2021 to February 2022**

For Meeting on 15 March 2022

Meeting Agenda for the Cabbage Tree Road Sand Quarry Community Consultative Committee.

Tuesday 15th March 2022 at 9.00am

Agenda Items:

- ▶ 1) Apologies and welcome to new members
- ▶ 2) Declaration of pecuniary or other interests
- ▶ 3) Minutes to be adopted
- ▶ 4) Business arising from previous minutes - response to issues raised or provision of additional information requested
- ▶ 5) Correspondence
- ▶ 6) Proponents reports and overview of activities, including:
 - ▶ * progress of the project
 - ▶ * monitoring and environmental performance
 - ▶ * community complaints and response to these complaints
 - ▶ * information provided to the community and any feedback
- ▶ 7) Other agenda items
- ▶ 8) General business
- ▶ 9) Next meeting

Actions from previous minutes

December 2021

- ▶ Continue to implement the additional controls to keep sand off the acceleration lane and access road to minimise dust.
 - ▶ Wheel wash install is currently scheduled for installation over next two weeks (i.e. operational by end of March 2022).
 - ▶ Processing plant scheduled for relocation to Sector 3 in June 2022, that will increase area of bitumen road way.
- ▶ Consider how to remove any surplus sand from the road side (noting RMS considerations).
 - ▶ Roadway has had some improvement we are about a 3rd of the way down, have been using a shovel to move the sand and dig a small “V” beside the bitumen to allow an escape for the sand to avoid sand build up (noting as wheel wash and bitumen extends sand will be reduced).
 - ▶ A sweeper has been along, and focused on removing more sand from the guard rails.
 - ▶ Minimal sand on road way (some still on shoulder).
 - ▶ Slashing company has been engaged to mow along inside the guard rail.
 - ▶ This is part of the solution, removing more sand from tires will lead to further reductions.

Actions from previous minutes December 2021



V-shape dug on road edge and grass removal to let sand move off road way - some success, but is not a solution in isolation.

Community Complaints since December 2022

- ▶ Community complaints register available at:
<https://www.newcastlesand.com.au/complaints-register/>
- ▶ 1 complaint received since December 2021 in relation to:
 - ▶ Trucks using private property entrance to turn around / stop, two trucks identified, one of these was a customer from the quarry, the other unknown.
 - ▶ Trucking company was contacted, that driver no longer works for that company and owner of business assured Quarry Manager that this would not occur again.
 - ▶ Was made clear to owner that any further manoeuvres of this nature in these locations would not be tolerated and would result in suspension from haulage of sand from the quarry.

Regulatory Correspondence

- ▶ Site Inspection by DPE in December 2021, suggested:
 - ▶ Improved fencing of offset area.
 - ▶ Secondary containment line for generator fuel line.
 - ▶ Improved extraction depth control system.
 - ▶ Maintenance of frog / sediment fence.
 - ▶ Review of Sector 7 extraction and rehabilitation process.
- ▶ The Reporting period for the 2021 Annual Review ends December 31st 2021 and will be due for submission by 31 March 2021.
 - ▶ Will be available for review after DPE approval.

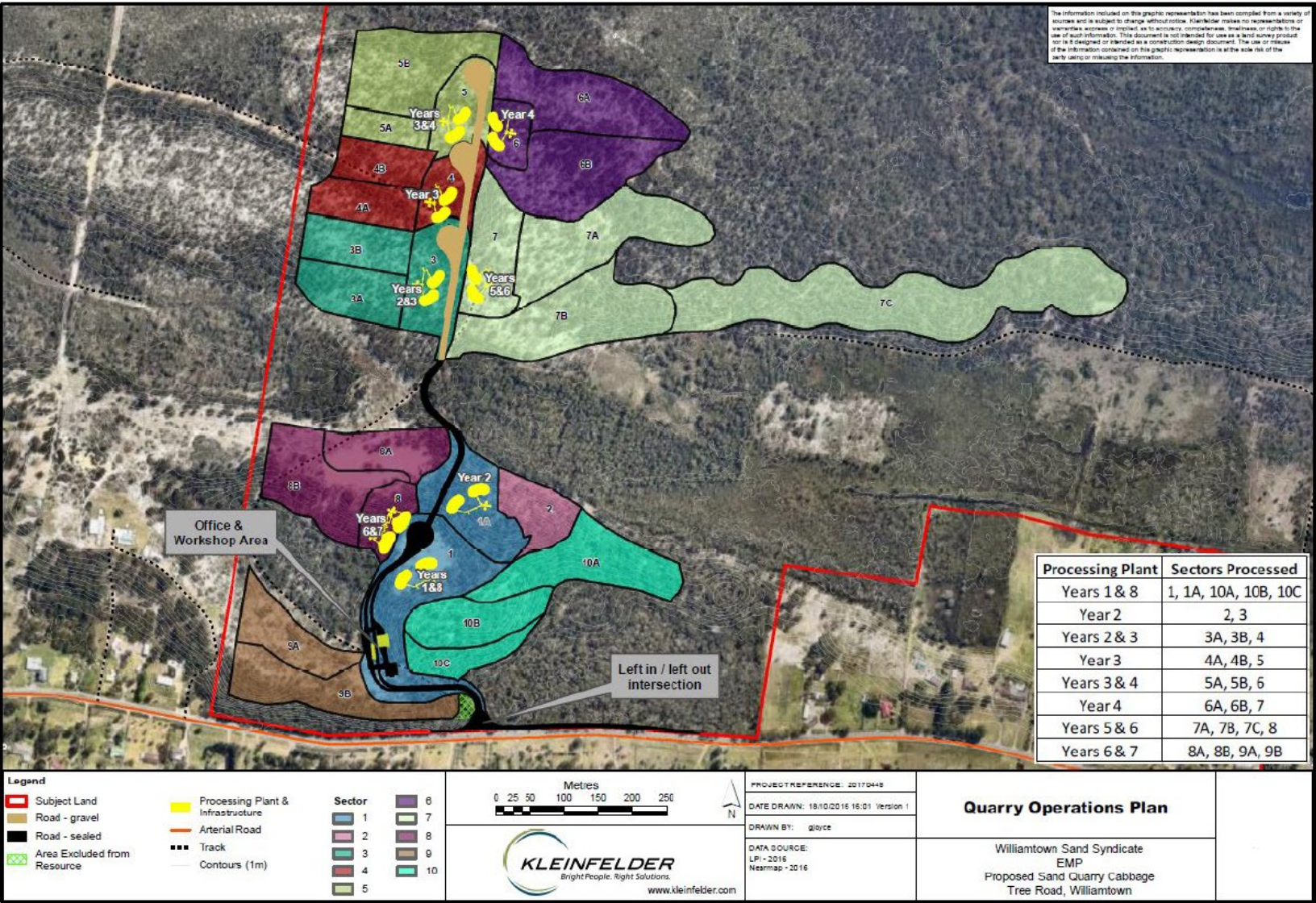
Recent Updates

- ▶ Management plans are currently being reviewed and submitted to DPE, when approved, will be uploaded to the website.
- ▶ Maximum Extraction Depth Management Plan has been reviewed by a groundwater specialist:
 - ▶ Assessed suitability of the original model;
 - ▶ Reviewed how the measured data compared to the predicted; and
 - ▶ Considered suitability of the current extraction levels (i.e. to ensure the quarry remains 0.7m above maximum predicted groundwater level).
 - ▶ Major rainfall event in March 2021 confirmed predicted levels are likely conservative.
 - ▶ No change to extraction levels recommended.

Key Activities Completed During this Period

- ▶ Cleared Sector 3B and portions of 4, 4A and 4B through to existing access road.
- ▶ Stripped portion of topsoil from 3B.
- ▶ Continued progressive extraction of sand from Sector 1A / 2, 3A, 3B.
- ▶ Rehabilitation within start of Sector 7, trialling different densities of timber on the surface.
- ▶ Developing Sector 3 area for move of the processing plant likely to occur in June 2022.
- ▶ Improving sequencing to minimise storage and double handling associated with clearing, topsoil removal and rehabilitation.
- ▶ Seed collection occurred in February 2022.


Key activities completed during this period



Key Activities Completed During this Period

- ▶ Currently selling white, amber / washed (concrete), landscape and fill sand from the quarry.
- ▶ Haulage since November 2021 (also see later slides):
 - ▶ Averaged approximately 23% of monthly haulage allowance.
 - ▶ Busiest day occurred in November 2021 at 54.3% (down from 68.1% in Oct 21) of daily haulage allowance.
 - ▶ Busiest month was November 2021 at 29.6% (down from 40.5% in Oct 21) of monthly haulage allowance.
- ▶ Weighbridge system is working well in helping regulating maximum haulage rates - system will not give driver a ticket unless under haulage rate.

Monitoring - Trucks November 2021



NEWCASTLE SAND

November 2021


Monthly Summary of Traffic Movements			
(as per Condition 26 of Consent SSD_6125)			
Date	Total	Approved Maximum*	Percentage of Approved Movements
1-Nov	51	116	44.0%
2-Nov	37	116	31.9%
3-Nov	45	116	38.8%
4-Nov	50	116	43.1%
5-Nov	37	116	31.9%
6-Nov	12	90	13.3%
8-Nov	40	116	34.5%
9-Nov	38	116	32.8%
10-Nov	33	116	28.4%
11-Nov	30	116	25.9%
12-Nov	18	116	15.5%
13-Nov	1	9	11.1%
15-Nov	51	116	44.0%
16-Nov	43	116	37.1%
17-Nov	63	116	54.3%
18-Nov	60	116	51.7%
19-Nov	35	116	30.2%
20-Nov	14	90	15.6%
22-Nov	42	116	36.2%
23-Nov	26	116	22.4%
24-Nov	24	116	20.7%
25-Nov	36	116	31.0%
26-Nov	13	116	11.2%
29-Nov	30	116	25.9%
30-Nov	33	116	28.4%
Total trucks this month	862		
Approved maximum for month*		2912	29.6%
* Maximum approved haulage as per Condition 23 of Consent SSD_6125: - 6 trucks per hour from 6am to 7am Monday to Friday. - 10 trucks per hour from 7am to 6pm Monday to Friday. - 10 trucks per hour from 7am to 4pm on Saturday. - No haulage on Public Holidays.			
The weighbridge and ticketing system is routinely calibrated and managed by an accredited external business to ensure the sale and transport of sand from the quarry is consistent with approved haulage limits and operational times.			

Monitoring - Trucks December 2021

[illegible]

Monitoring - Trucks

January 2022



NEWCASTLE SAND

January 2022


Monthly Summary of Traffic Movements			
(as per Condition 26 of Consent SSD_6125)			
Date	Total	Approved Maximum*	Percentage of Approved Movements
4-Jan	5	116	4.3%
5-Jan	9	116	7.8%
6-Jan	10	116	8.6%
7-Jan	11	116	9.5%
10-Jan	29	116	25.0%
11-Jan	30	116	25.9%
12-Jan	20	116	17.2%
13-Jan	24	116	20.7%
14-Jan	14	116	12.1%
17-Jan	33	116	28.4%
18-Jan	32	116	27.6%
19-Jan	21	116	18.1%
20-Jan	16	116	13.8%
21-Jan	22	116	19.0%
22-Jan	7	90	7.8%
24-Jan	36	116	31.0%
25-Jan	27	116	23.3%
27-Jan	23	116	19.8%
28-Jan	25	116	21.6%
29-Jan	2	90	2.2%
31-Jan	35	116	30.2%
Total trucks this month	431		
Approved maximum for month*		2654	16.2%

* Maximum approved haulage as per Condition 23 of Consent SSD_6125:

- 6 trucks per hour from 6am to 7am Monday to Friday.
- 10 trucks per hour from 7am to 6pm Monday to Friday.
- 10 trucks per hour from 7am to 4pm on Saturday.
- No haulage on Public Holidays.

The weighbridge and ticketing system is routinely calibrated and managed by an accredited external business to ensure the sale and transport of sand from the quarry is consistent with approved haulage limits and operational times.

Monitoring - Trucks February 2022



NEWCASTLE SAND

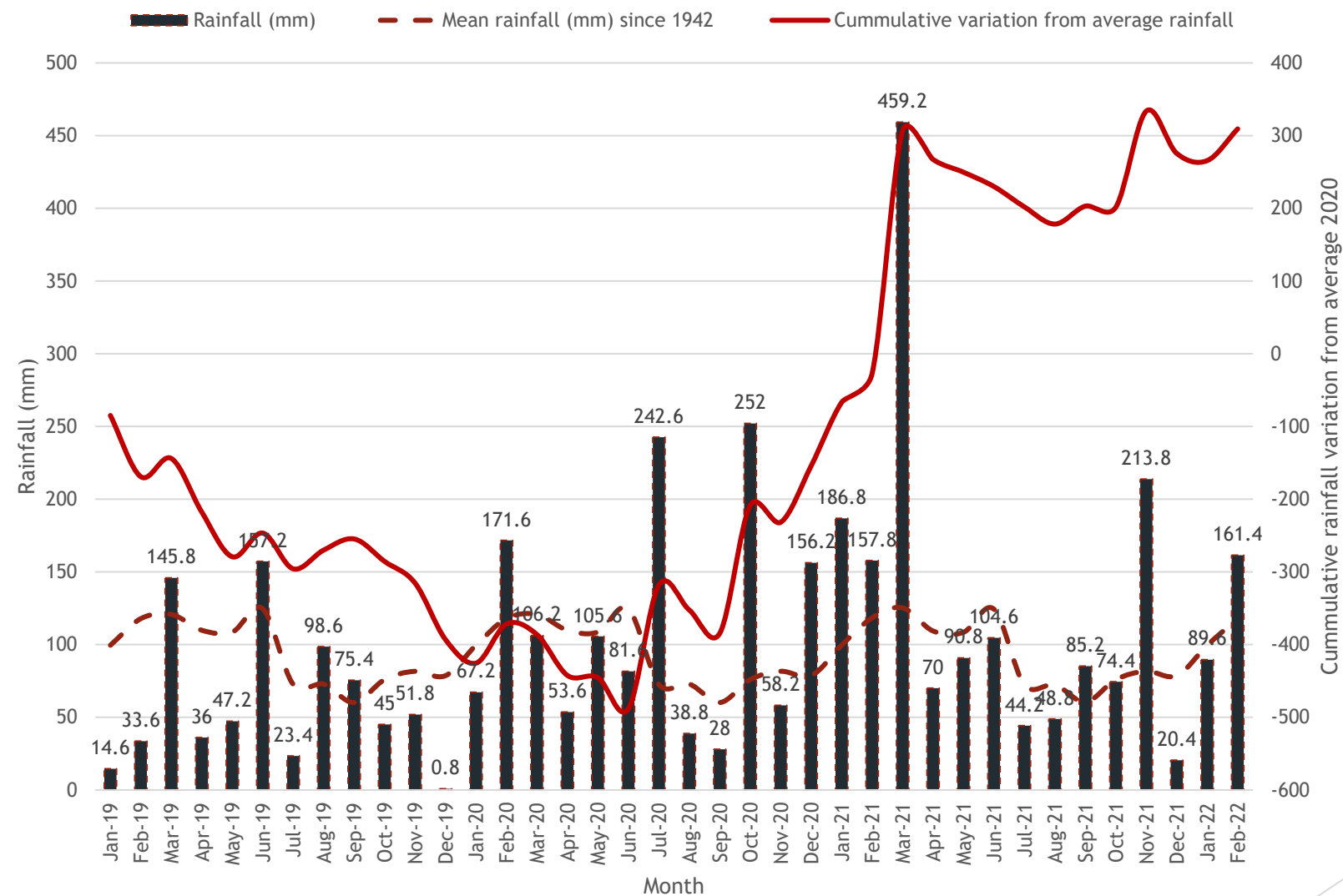
February 2022

Monthly Summary of Traffic Movements			
(as per Condition 26 of Consent SSD_6125)			
Date	Total	Approved Maximum*	Percentage of Approved Movements
1-Feb	32	116	27.6%
2-Feb	40	116	34.5%
3-Feb	17	116	14.7%
4-Feb	22	116	19.0%
5-Feb	3	90	3.3%
7-Feb	23	116	19.8%
8-Feb	30	116	25.9%
9-Feb	41	116	35.3%
10-Feb	36	116	31.0%
11-Feb	38	116	32.8%
12-Feb	7	90	7.8%
14-Feb	36	116	31.0%
15-Feb	42	116	36.2%
16-Feb	34	116	29.3%
17-Feb	45	116	38.8%
18-Feb	24	116	20.7%
19-Feb	7	90	7.8%
21-Feb	27	116	23.3%
22-Feb	27	116	23.3%
23-Feb	29	116	25.0%
24-Feb	24	116	20.7%
25-Feb	19	116	16.4%
26-Feb	4	90	4.4%
28-Feb	35	116	30.2%
Total trucks this month	642		
Approved maximum for month*		2680	24.0%
<p>* Maximum approved haulage as per Condition 23 of Consent SSD_6125:</p> <ul style="list-style-type: none"> - 6 trucks per hour from 6am to 7am Monday to Friday. - 10 trucks per hour from 7am to 6pm Monday to Friday. - 10 trucks per hour from 7am to 4pm on Saturday. - No haulage on Public Holidays. 			
<p>The weighbridge and ticketing system is routinely calibrated and managed by an accredited external business to ensure the sale and transport of sand from the quarry is consistent with approved haulage limits and operational times.</p>			

Environmental Monitoring - Rainfall

- ▶ 2019 rainfall had a total of 729mm, against an average of 1127mm.
- ▶ 2020 rainfall reached a cumulative peak deficit of 488mm in June 2020, and was 154 mm behind average at the end of December 2020, with a 2020 annual total above average at 1362mm.
- ▶ 2021 rainfall has continued to be above average, with 1556mm for the year.
- ▶ Cumulatively, since January 2019, after the drought period in 2019/2020 rainfall where rainfall reached 488mm below average, it is now, at end of February 2022, 309 mm ahead of average.

Environmental Monitoring - Water



Environmental Monitoring - Water

- ▶ Continuous logging of groundwater depth data at several wells across site.
- ▶ Groundwater and surface water sampled on monthly basis, results available on the website <https://www.newcastlesand.com.au/monitoring-results/>.
- ▶ PFOS has been detected sporadically in the wash plant water at up to 0.03µg/L or (micrograms per litre or parts per billion), this is well below the adopted trigger level for the site of 0.07µg/L (same as the drinking water criteria).
 - ▶ Sampling of feed sand, potable water and product sand on multiple occasions have not found any detectable PFAS.
 - ▶ Potentially caused by very low trace levels within one or both of the inputs that is accumulating in the wash plant or possibly leaching from equipment.
 - ▶ Monitoring will continue.

Groundwater Levels - Jan 2022

(Green shading shows levels more than 0.5m below inferred maximum)

Borehole	Top of Casing (mAHD)	Depth to Water (mBTC)	Groundwater Elevation (mAHD)	Well Total Depth Current (mBTC)	Well Total Depth 2014 (mBTC)	Inferred Max GW Elevation (mAHD) ¹	Comment
BH1	8.64	5.429	-	8.18	9.45	4.5	Not sampled at edge of extraction
BH2	7.79	5.050	2.699 (was 2.74)	8.85	9.45	3.8	Dark brown, no odour / sheen, well in good condition
BH4	3.06	1.069	1.766 (was 1.991)	6.01	6.45	3.0	Light brown, no odour / sheen, well in good condition
BH5	7.36	-	-	-	9.28	4.0	No sample taken
BH6	3.62	0.815	2.344 (was 2.805)	4.52	4.95	4.4	Medium brown, moderate sulphur odour, no sheen, well in good condition
BH7	2.98	1.065	1.567 (was 1.915)	4.51	4.95	3.7	Dark brown / red, slight sulphur odour, no sheen, well in good condition
BH8	3.88	-	-	-	6.28	4.0	No sample taken
BH9	17.75	15.702	1.988 (was 2.048)	15.98	18.8	3.0	No sample taken (insufficient volume of water)
BH9A	10.25	8.672	1.38 (was 1.578)	12.44	16.16	3.0 ₂	Medium brown, slight sulphur odour, no sheen, well in good condition
BH10	6.69	-	-	-	5.45	4.9	No sample taken
BH11	6.63	2.269	4.26 (was 4.361)	5.29	5.95	5.5	Light yellow, very slight sulphur odour, no sheen, well in good condition
BH12	8.67	6.158	-	8.21	8.39	4.0	Not sampled at edge of extraction

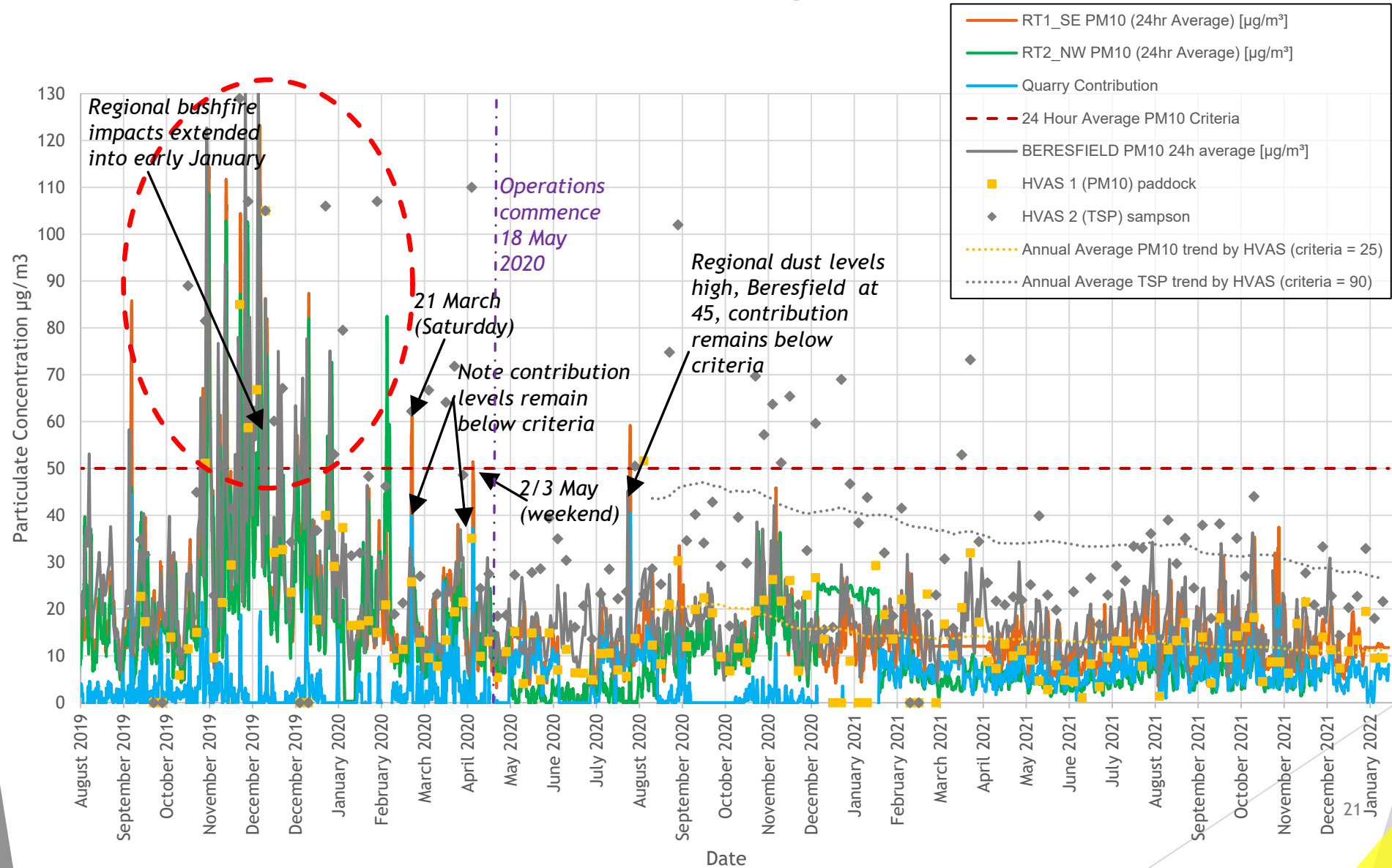
Environmental Monitoring - Air

- ▶ Network includes two Beta Attenuation Monitors (BAMs) that measure real-time particulate matter smaller than 10 micron (PM10).
 - ▶ These record average value every 15 minutes continuously.
- ▶ Two High Volume Air Sampler (HVAS) one measuring PM10 and one measuring total suspended particulates (TSP).
 - ▶ These run for 24 hours every six days.
- ▶ Quarry must implement all reasonable and feasible avoidance and mitigation measures so particulate emissions from quarry do not cause exceedance of:
 - ▶ PM10 annual average $25 \mu\text{g}/\text{m}^3$ cumulative.
 - ▶ Quarry PM10 contribution over 24 hour average $50 \mu\text{g}/\text{m}^3$.

Environmental Monitoring - Air

- ▶ Air quality has improved since the previous meeting:
 - ▶ Annual average PM10 levels measured with HVAS at 350 Cabbage Tree Road to end January 2022 is 12.1 $\mu\text{g}/\text{m}^3$ (was 13.4 in Oct 21) against 25 $\mu\text{g}/\text{m}^3$ criteria.
 - ▶ Annual average PM10 measured with BAM at 393 Cabbage Tree Road to end January 2022 is 12.6 $\mu\text{g}/\text{m}^3$ (was 13.0 in Oct 21) against 25 $\mu\text{g}/\text{m}^3$ criteria.
 - ▶ Annual average PM10 measured with BAM at 453 Cabbage Tree Road to November 2021 is 6.7 $\mu\text{g}/\text{m}^3$ (was 9.3 in Oct 21) against 25 $\mu\text{g}/\text{m}^3$ criteria.
 - ▶ TSP levels measured with HVAS at 393 Cabbage Tree Road to end January 2022 is 27.7 $\mu\text{g}/\text{m}^3$ (was 32.5 in Oct 21) against 90 $\mu\text{g}/\text{m}^3$ criteria.
- ▶ Air quality model in assessment used an assumed annual average background of 19.4 $\mu\text{g}/\text{m}^3$.
- ▶ Data summarised online at: <https://www.newcastlesand.com.au/air-quality/>

Environmental Monitoring - Air



The site from December 2021 to March 2022



Entry batter revegetation is improving.

The site from December 2021 to March 2022



Wash plant and washed sand stockpile - note this area to be relocated in June 2022 - will move loading over 450m north from here

The site from December 2021 to March 2022



Sector 1A/2 nearing extraction completion

The site from December 2021 to March 2022



Sector 3 looking west, where the processing plant will be installed in June 2022

The site from December 2021 to March 2022



Looking south east over cleared section of Sector 3A/B to Sector 3 extraction

The site from December 2021 to March 2022



Looking east across Sector 3A partially extracted, with topsoil on floor level

The site from December 2021 to March 2022



Sector 3A with topsoil spread - next phase will be placement of logs (on left) over the topsoil.

The site from December 2021 to March 2022



Portion of Sector 7 completed, and in early stage of rehabilitation

The site from December 2021 to March 2022



Sector 7, early days, but some seedlings are starting to come through, several lizards observed using timber for shelter

Questions?

More Information

- ▶ www.newcastlesand.com.au
- ▶ Quarry Manager - 0402 648 079
- ▶ info@newcastlesand.com.au