

Williamtown Sand Syndicate (WSS) Cabbage Tree Road Sand Quarry Community Consultative Committee Meeting

13 September 2022
9:02-9:43am
Mercure Newcastle Airport

Meeting Number:	9 th Meeting	Type of meeting:	General
Chairperson:	John Turner - JT	Note taker:	Jonathan Berry
Attendees:	Wayne Sampson (Resident) – WS Shirley Davis (Resident) – SD Greg Callaghan (Resident) – GC Stephen Kuehn (Resident) – SK John Simpson (Hunter Water Representative) – JS Jonathan Berry (Wedgetail Project Consulting) – JB		
Apologies:	Peter West (Resident) – PW Paul Hardes (Resident) – PH Darren Williams (WSS) – DW Barry Davis (Resident) – BD		
Observers:	None		
Meeting Open:	9:00am		

Minutes

Agenda item: 1	Apologies	Presenter:	John Turner
-----------------------	------------------	-------------------	-------------

Discussion:

Peter West (Resident) – PW
Darren Williams (WSS) – DW
Barry Davis (Resident) – BD

Sean Pennell, former Quarry Manager at Newcastle Sand no longer works at the quarry.

Agenda item: 2	Declaration of Pecuniary Interest	Presenter:	NA
-----------------------	--	-------------------	----

Discussion:

John Turner (Chairperson) – Paid for service by WSS.
Wayne Sampson (Resident) – Deed with WSS.
Jonathan Berry (Wedgetail Project Consulting) – Consultant employed by WSS.
Shirley Davis (Resident) – Nil.
Greg Callaghan (Resident) – Deed with WSS
Paul Hardes (Resident) – Deed with WSS
Stephen Kuehn (Resident) – Deed with WSS

Agenda item: 3 Minutes to be adopted

Presenter: John Turner

Discussion:

Minutes from the last meeting were noted.

Minutes moved by GC. Minutes seconded by WS. All Agree.

Agenda item: 4 Business Arising from Previous Minutes

Presenter: JT

- Response to issues raised or provision of additional information requested;

- Nil

Agenda item: 5 Correspondence

Presenter: John Turner

- See presentation.

Agenda item: 6 Proponents reports & overview of activities, including; Presenter: Jonathan Berry

- Progress of the project
- Monitoring & environmental performances
- Community complaints & responses to these complaints
- Information provided to the community and any feedback

JB – Gave presentation of slides.

JB – Discussion on the high groundwater water levels

SK – Noted that in February 1990, when 250mm fell on one day and another 125mm fell the following day water levels are close to what they are at the moment, and there were houses in Barrie Close that had some water inundation. The water flows west to east. Some shallow drains were put in on Barrie Close after that event.

JS – HWC has also had numerous complaints / enquires from residents about the high water levels.

SD – BD has called someone at the quarry to complain about the early trucks, unsure who was called.

JB – Will followup with the quarry to ensure any complaints received by phone are included in the register.

WS – Any koalas been observed onsite?

JB – Yes koalas have been recorded on camera moving within the site.

JS – RE: High Water Levels – reasons for the buffer distance of the quarry from the aquifer is around preventing ponding and evaporation from the aquifer, and also ensuring that a suitable landscape can be rehabilitated onsite that is similar to what is current existing onsite.

WS – Noted that RZM had concerns that the fine silts and clays that were released during the dredging on the site would block infiltration within the sand beds, to reduce this a fines plant was then introduced along with flocculant addition to remove the silts which were then deposited in various emplacements in the local area.

SD – Still some ongoing concern with the amount of sand that remains along the shoulder of the acceleration lane and how this can swirl up behind trucks as they leave.

JB – Will followup with the quarry to get more sweeping / removal of the sand buildup.

JS – Who is completing the rehabilitation onsite?

JB – Wedgetail and Hunter Indigenous Plants have been collecting seed and this Spring will be the first monitoring completed of the rehabilitation areas. We can then see what is seeding and what needs additional effort and possible tube stock.

JS – Based on experience in the sand beds, tubestock will certainly be needed for the canopy species like the eucalypts and banksias. Recommend getting these in as soon as possible so they are not outcompeted by other species. No problem in waiting to see what comes up, but it will certainly be needed.

JB – Will increase the importance of tubestock and aim to get some underway following the first monitoring event.

Action items	Person responsible	Deadline
✓ Followup with quarry staff to ensure phone complaints when received are also added to the register.	JB	20/09/2022
✓ Attend to sand build up along acceleration lane shoulder	JB / Newcastle Sand	20/09/2022
✓ Increase the importance of tubestock in rehabilitation and get some ready for planting in rehabilitation	JB	20/09/2022

Agenda item: 7 Other Agenda Items **Presenter:** John Turner

Discussion:

JT – There were no other agenda items received.

Agenda item: 8 General Business **Presenter:** John Turner

Discussion:

JT – Is there any general business?

WS – Have any wild bee hives been observed onsite, will need to keep an eye out?

JB – No wild bee hives have been found to my knowledge.

WS – What is happening with the traffic island?

JB – No change since the last meeting that I am aware of.

SD – Can I please have a hard copy dropped off.

Action items	Person responsible	Deadline
✓ SD – Can someone please drop off a copy of the minutes to my letter box?	Newcastle Sand will drop of a copy	When completed
✓		

Agenda item: 9 Next Meeting **Presenter:** John Turner

Discussion:

JT – The meeting is now closed at 9:43am, the next meeting to be advised.

Action items	Person responsible	Deadline
None.		

Other Information

- Minutes to be provided as draft in the next week.
- Committee members have one week to provide feedback on the minutes to the Chairperson.
- Within two weeks of receiving feedback the minutes will be finalized and distributed to members and placed on the website.

Meeting Close:

9:25 am



NEWCASTLE **SAND**

Community Consultative Committee Update

Project update for the period **June to September 2022**

For Meeting on 13 September 2022

Meeting Agenda for the Cabbage Tree Road Sand Quarry Community Consultative Committee.

Tuesday 13 September 2022 at 9.00am

Agenda Items:

- ▶ 1) Apologies
- ▶ 2) Declaration of pecuniary or other interests
- ▶ 3) Minutes to be adopted
- ▶ 4) Business arising from previous minutes - response to issues raised or provision of additional information requested
- ▶ 5) Correspondence
- ▶ 6) Proponents reports and overview of activities, including:
 - ▶ * progress of the project
 - ▶ * monitoring and environmental performance
 - ▶ * community complaints and response to these complaints
 - ▶ * information provided to the community and any feedback
- ▶ 7) Other agenda items
- ▶ 8) General business
- ▶ 9) Next meeting

Actions from previous minutes June 2022

- ▶ Nil required.

Correspondence

► Nil

Community Complaints since June 2022

- ▶ Community complaints register available at:
<https://www.newcastlesand.com.au/complaints-register/>
- ▶ 3 complaints / enquires reported in register June 2022 in relation to:
 - ▶ Council inspected the site after receiving enquiries from residents of Barrie Close about the high water levels. Water levels not related to Newcastle Sand, just due to record rainfall levels.
 - ▶ 1 in relation to a truck exiting the site without a load covering. Records reviewed found this truck did enter the quarry, but did so by accident and left the quarry without a load. Only laden trucks need to be covered.
 - ▶ 1 for a truck that was noted as entering before 6am (on a Saturday) and waking residents. Reviewed footage and records for day and time of complaint, and no truck was recorded entering the site at that time, the first vehicles to arrive were quarry employees.
- ▶ Would like to remind community that it is best when complaints are made at the time of the event, many received are two weeks old.

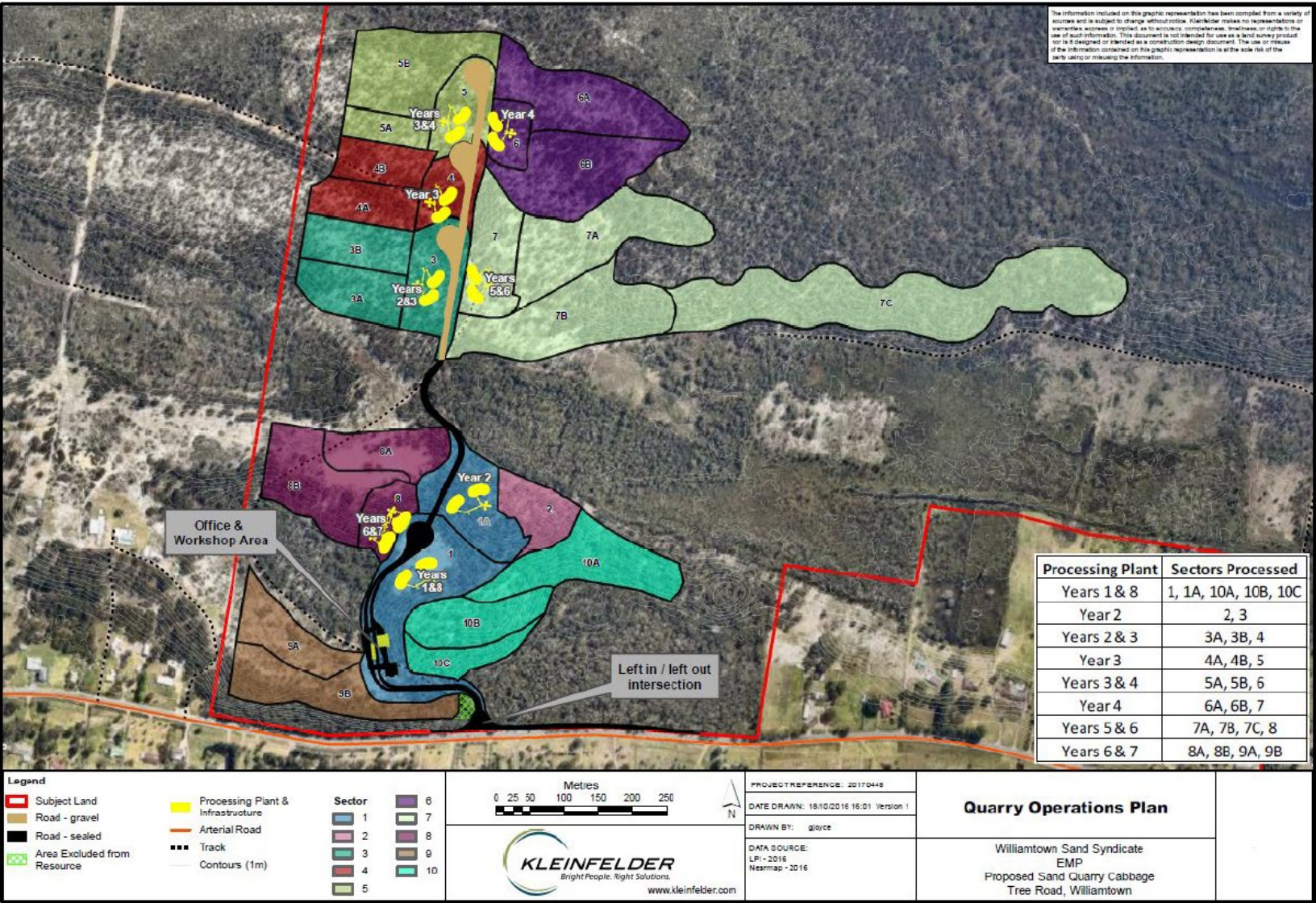
Regulatory Correspondence

- ▶ Water levels updates have continued, noting levels starting to subside.
- ▶ Notice provided in relation to elevated zinc levels in one bore, suspected to be related to oxidised galvanised steel either local to well or the well monument itself. Further testing being conducted.

Key Activities Completed During this Period

- ▶ Cleared Sector 4 and 4B in July.
- ▶ Cleared Sector 5A in September.
- ▶ Continued progressive extraction of sand from Sector 2, 4, 4B and 7.
- ▶ Rehabilitation in Sector 7
- ▶ Continued delays occur in getting the wash plant setup in Sector 3 due to manufacturing and shipping delays. These delays require additional haulage and delay the wheel wash installation.
- ▶ Seed collection has occurred during the clearing of Sector 4 and 4B.


Key activities completed during this period



Key Activities Completed During this Period

- ▶ Currently selling white, amber / washed (concrete), landscape and fill sand from the quarry.
- ▶ Haulage since June 2022 (also see later slides):
 - ▶ Averaged approximately 43% of monthly haulage allowance (up from 24% last period).
 - ▶ Busiest day occurred in August 2022 at 72.4% of daily haulage allowance.
 - ▶ Busiest month was August 2022 at 48.1% of monthly haulage allowance.
 - ▶ Haulage rate for August is approximately at level for maximum annual extraction.
- ▶ Weighbridge system is working well in helping regulating maximum haulage rates - system will not give driver a ticket unless under haulage rate.

Monitoring - Trucks August 2022



NEWCASTLE SAND

August 2022

Monthly Summary of Traffic Movements			
(as per Condition 26 of Consent SSD_6125)			
Date	Total	Approved Maximum*	Percentage of Approved Movements
1-Aug	49	116	42.2%
2-Aug	74	116	63.8%
3-Aug	81	116	69.8%
4-Aug	84	116	72.4%
5-Aug	79	116	68.1%
6-Aug	12	116	10.3%
8-Aug	56	116	48.3%
9-Aug	45	116	38.8%
10-Aug	42	116	36.2%
11-Aug	42	116	36.2%
12-Aug	42	116	36.2%
13-Aug	8	116	6.9%
15-Aug	71	116	61.2%
16-Aug	59	116	50.9%
17-Aug	60	116	51.7%
18-Aug	55	116	47.4%
19-Aug	44	116	37.9%
20-Aug	10	116	8.6%
22-Aug	48	116	41.4%
23-Aug	41	116	35.3%
24-Aug	51	116	44.0%
25-Aug	58	116	50.0%
26-Aug	57	116	49.1%
27-Aug	13	116	11.2%
29-Aug	69	116	59.5%
30-Aug	68	116	58.6%
31-Aug	82	116	70.7%
Total trucks this month	1400		
Approved maximum for month*		2912	48.1%

* Maximum approved haulage as per Condition 23 of Consent SSD_6125:

- 6 trucks per hour from 6am to 7am Monday to Friday.

- 10 trucks per hour from 7am to 6pm Monday to Friday.

- 10 trucks per hour from 7am to 4pm on Saturday.

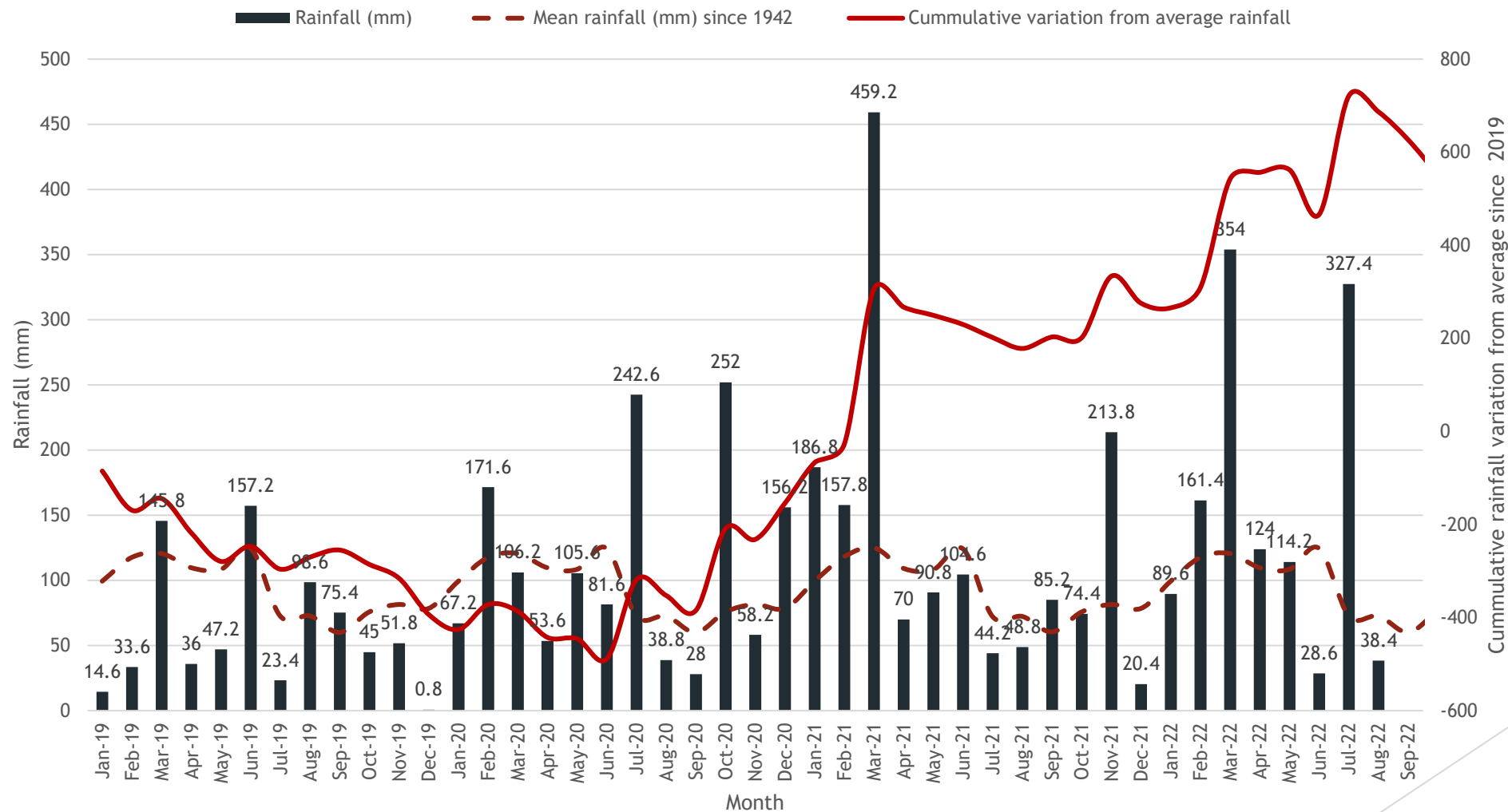
- No haulage on Public Holidays.

The weighbridge and ticketing system is routinely calibrated and managed by an accredited external business to ensure the sale and transport of sand from the quarry is consistent with approved haulage limits and operational times.

Environmental Monitoring - Rainfall

- ▶ Annual average rainfall at Williamtown is 1127mm.
- ▶ 2019 rainfall had a total of 729mm.
- ▶ 2020 rainfall (recovered second half of year) above average with 1362mm.
- ▶ 2021 rainfall above average with 1556mm.
- ▶ 2022 rainfall to 31 August, is already 1237 mm (with average rainfall will be similar to 2021).
- ▶ Cumulatively over the last 3 months, we have had 125mm above average (June 2022 below average, July 2022 above average, August 2022 below average.)

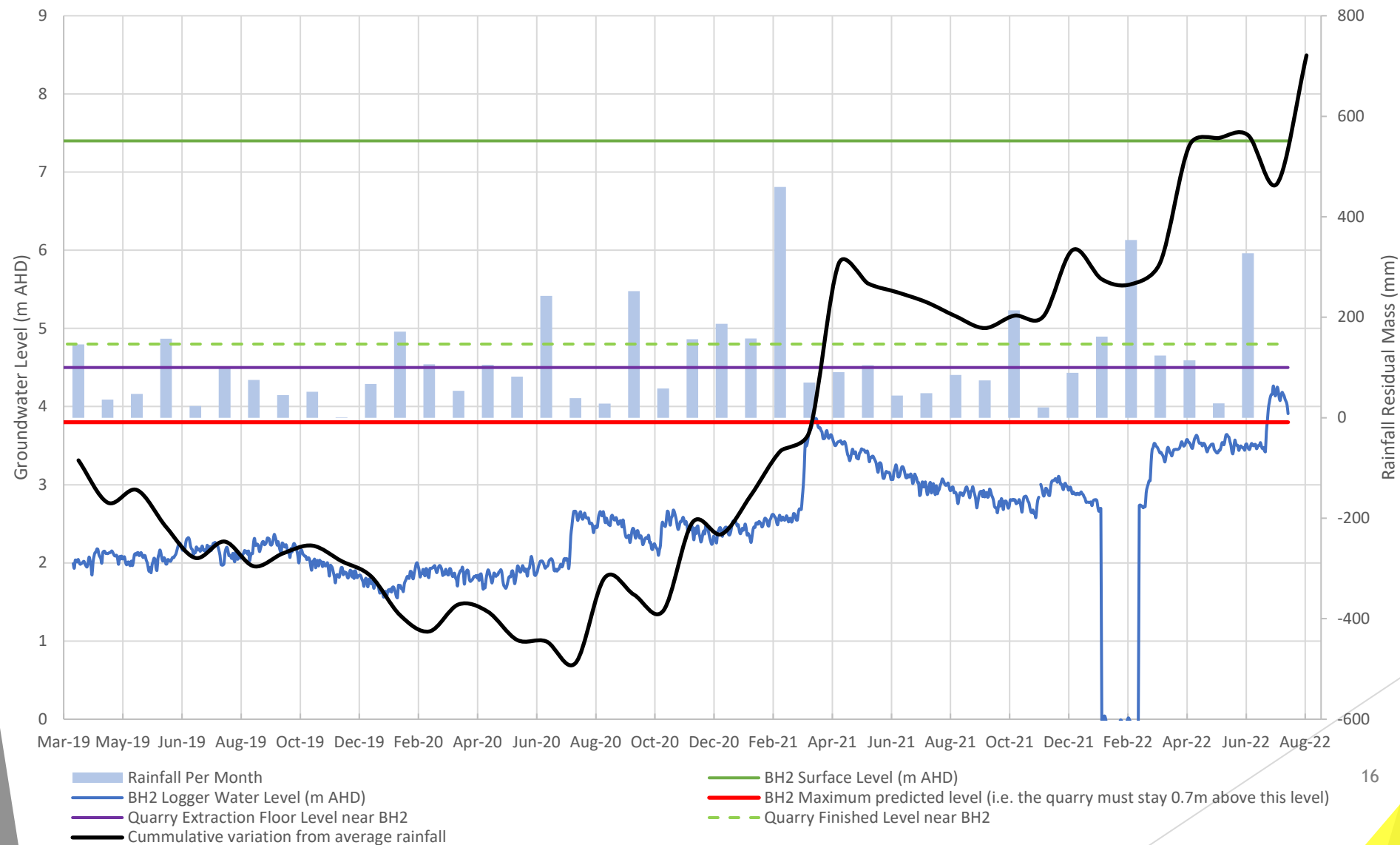
Environmental Monitoring - Water



Environmental Monitoring - Water

- ▶ Continuous logging of groundwater depth data at several wells across site.
- ▶ Groundwater and surface water sampled on monthly basis, results available on the website <https://www.newcastlesand.com.au/monitoring-results/>.
- ▶ Water levels have been high due to rainfall, highest levels (relative to the quarry floor) are located at the northern side of the quarry. Weekly checks have been occurring to monitor changes.
- ▶ A groundwater specialist currently reviewing data, initial interpretation is that while the levels are above the predicted (the 95% level was adopted as maximum), the model is likely to remain accurate with no changes necessary as the recent rainfall levels are likely in excess of 95% of the rainfall events.
- ▶ The intent of the imposed groundwater level was to avoid ponding and mobilisation of metals in the groundwater that occurred during past mineral sand mining. The current high levels are a rare occurrence and unlikely to remain elevated. The pit floor remains above the groundwater level and will not result in ponding.

Environmental Monitoring - Water



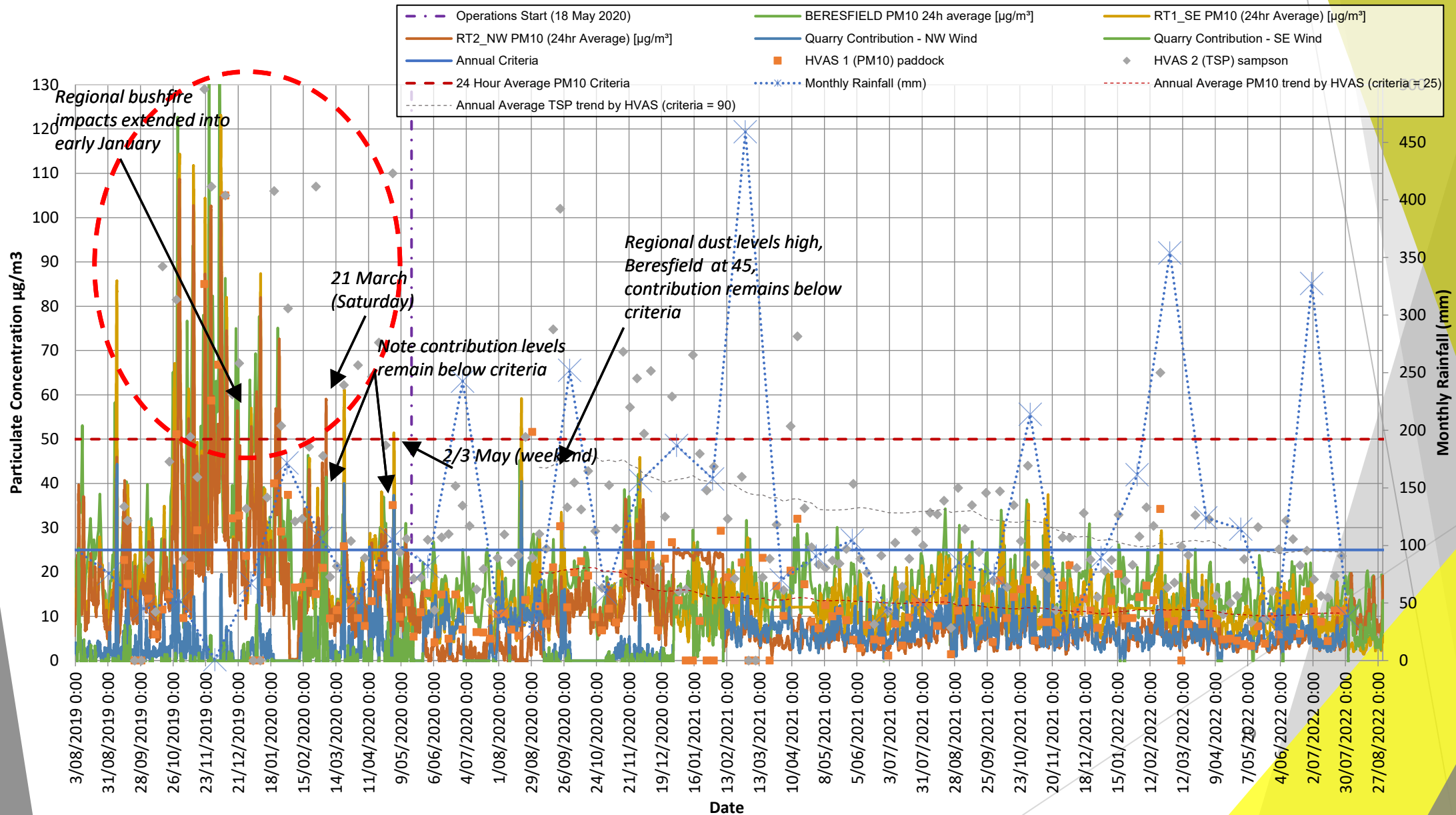
Environmental Monitoring - Air

- ▶ Network includes two Beta Attenuation Monitors (BAMs) that measure real-time particulate matter smaller than 10 micron (PM10).
 - ▶ These record average value every 15 minutes continuously.
- ▶ Two High Volume Air Sampler (HVAS) one measuring PM10 and one measuring total suspended particulates (TSP).
 - ▶ These run for 24 hours every six days.
- ▶ Quarry must implement all reasonable and feasible avoidance and mitigation measures so particulate emissions from quarry do not cause exceedance of:
 - ▶ PM10 annual average $25 \mu\text{g}/\text{m}^3$ cumulative.
 - ▶ Quarry PM10 contribution over 24 hour average $50 \mu\text{g}/\text{m}^3$.

Environmental Monitoring - Air

- ▶ Air quality has improved or remained similar to those at previous meeting:
 - ▶ Annual average PM10 levels measured with HVAS at 350 Cabbage Tree Road to end July 2022 is 10.9 $\mu\text{g}/\text{m}^3$ (was 10.2 in May 22) against 25 $\mu\text{g}/\text{m}^3$ criteria.
 - ▶ Annual average PM10 measured with BAM at 393 Cabbage Tree Road to end of August 2022 is 11.4 $\mu\text{g}/\text{m}^3$ (was 12.2 in May 22) against 25 $\mu\text{g}/\text{m}^3$ criteria.
 - ▶ Annual average PM10 measured with BAM at 453 Cabbage Tree Road to end of August 2022 is 5.6 $\mu\text{g}/\text{m}^3$ (was 5.4 in May 22) against 25 $\mu\text{g}/\text{m}^3$ criteria.
 - ▶ TSP levels measured with HVAS at 393 Cabbage Tree Road to end May 2022 is 24.6 $\mu\text{g}/\text{m}^3$ (was 24.9 in May 22) against 90 $\mu\text{g}/\text{m}^3$ criteria.
- ▶ Air quality model in assessment used an assumed annual average background of 19.4 $\mu\text{g}/\text{m}^3$.
- ▶ Data summarised online at: <https://www.newcastlesand.com.au/air-quality/>

Environmental Monitoring - Air



The site from June 2022 to Sept 2022



Wattle on the entry batter is starting to flower.

The site from June 2022 to Sept 2022



Wash plant and washed sand stockpile - note this area wash plant move has been delayed.

The site from June 2022 to Sept 2022



Sector 1A/2 nearing extraction completion

The site from June 2022 to Sept 2022



Sector 3 looking west, processing plant now expected later this year due to delays.

The site from June 2022 to Sept 2022



Current extraction area near boundary of Sector 4/5

The site from June 2022 to Sept 2022



Current extraction area near boundary of Sector 4/5

The site from June 2022 to Sept 2022



Clearing along eastern boundary of Sector 3/4

The site from June 2022 to Sept 2022



Looking east across Sector 3A, timber placed.

The site from June 2022 to Sept 2022



Portion of Sector 7 completed, and in early stage of rehabilitation, note habitat stacks aimed at providing improved shelter between treed areas

The site from June 2022 to Sept 2022



Portion of Sector 7 completed, and in early stage of rehabilitation, seedlings beginning to emerge

Questions?

More Information

- ▶ www.newcastlesand.com.au
- ▶ Quarry Manager - 0402 648 079
- ▶ info@newcastlesand.com.au