

# Williamtown Sand Syndicate (WSS) Cabbage Tree Road Sand Quarry Community Consultative Committee Meeting

09 December 2022

9:02-9:45am

Mercure Newcastle Airport

<b>Meeting Number:</b>	10 <sup>th</sup> Meeting	<b>Type of meeting:</b>	General
<b>Chairperson:</b>	John Turner - JT	<b>Note taker:</b>	Jonathan Berry
<b>Attendees:</b>	Wayne Sampson (Resident) – WS Shirley Davis (Resident) – SD Stephen Kuehn (Resident) – SK Paul Hardes (Resident) – PH John Simpson (Hunter Water Representative) – JS Darren Williams (WSS) – DW Jonathan Berry (Wedgetail Project Consulting) – JB		
<b>Apologies:</b>	Greg Callaghan (Resident) – GC Peter West (Resident) – PW Barry Davis (Resident) – BD		
<b>Observers:</b>	None		
<b>Meeting Open:</b>	9:02am		

## Minutes

<b>Agenda item: 1</b>	<b>Apologies</b>	<b>Presenter:</b>	John Turner
-----------------------	------------------	-------------------	-------------

### Discussion:

Peter West (Resident) – PW  
Barry Davis (Resident) – BD  
Greg Callaghan (Resident) – GC

<b>Agenda item: 2</b>	<b>Declaration of Pecuniary Interest</b>	<b>Presenter:</b>	NA
-----------------------	--	-------------------	----

### Discussion:

John Turner (Chairperson) – Paid for service by WSS.  
Wayne Sampson (Resident) – Deed with WSS.  
Jonathan Berry (Wedgetail Project Consulting) – Consultant employed by WSS.  
Shirley Davis (Resident) – Nil.  
Greg Callaghan (Resident) – Deed with WSS  
Paul Hardes (Resident) – Deed with WSS  
Stephen Kuehn (Resident) – Deed with WSS

**Agenda item: 3 Minutes to be adopted**

**Presenter:** John Turner

**Discussion:**

Minutes from the last meeting were noted.

Minutes moved by PH. Minutes seconded by WS. All Agree.

**Agenda item: 4 Business Arising from Previous Minutes**

**Presenter:** JT

- Response to issues raised or provision of additional information requested;

- Nil

**Agenda item: 5 Correspondence**

**Presenter:** John Turner

- See presentation.

**Agenda item: 6 Proponents reports & overview of activities, including; Presenter:** Jonathan Berry

- Progress of the project
- Monitoring & environmental performances
- Community complaints & responses to these complaints
- Information provided to the community and any feedback

JB – Gave presentation of slides.

Community Complaints slide:

SD – There have been no complaints as there is no point as the response is always the same and nothing is done, still trucks turning right, air brakes being used, sand on the road. Disappointed that nothing seems to change. No action on removing the traffic island.

DW – To be clear, Newcastle Sand has never committed to remove the traffic island that was installed consistent with the TfNSW requirements. Newcastle Sand stated that it would consider any TfNSW instructions.

JT – Traffic Island has been discussed multiple times, this is a TfNSW matter.

Modification Slide:

JS – With respect to the alternate timber management, judging from the photographs in the presentation the timber cover seems fine and he (HWC) would like to see substantial evidence it was too high prior to any reduction or significant changes to current practice. RZM's later rehabilitation was done in a similar way (i.e. timber placement rather than burning as originally done) and has been effective. Reductions in the timber cover once placed are likely to cause more damage than beneficial.

DW – Noted timber levels may be OK.

Monitoring Slide:

JS – HWC has observed PFAS in very low concentrations at several locations in the area, many times lower than what has been observed from Defence. Most of the observed changes in water chemistry are likely to be related to natural changes due to the changing water levels.

JS – What happened with water meeting called by neighbours in Barrie Close due to the high water levels? The presence of swamp mahogany in their yards suggest the water is naturally very high.

DW – Met with some of the owners and demonstrated with GPS that the reasons they thought the quarry may be related to the high water levels could not be related to works at the quarry. There was some concern the road connecting the north and south resource areas was once a creek that the quarry and obstructed. Elevation data showed this was not the case.

Action items	Person responsible	Deadline
✓ Nil		
✓		
✓		

**Agenda item: 7 Other Agenda Items** **Presenter:** John Turner

**Discussion:**

JT – There were no other agenda items received.

**Agenda item: 8 General Business** **Presenter:** John Turner

**Discussion:**

JT – Is there any general business?

Action items	Person responsible	Deadline
✓ SD – Can someone please drop off a copy of the minutes to my letter box?	Newcastle Sand will drop of a	When completed
✓	copy	

**Agenda item: 9 Next Meeting** **Presenter:** John Turner

**Discussion:**

JT – The meeting is now closed at 9:45am, the next meeting to be advised.

Action items	Person responsible	Deadline
None.		

## *Other Information*

- Minutes to be provided as draft in the next week.
- Committee members have one week to provide feedback on the minutes to the Chairperson.
- Within two weeks of receiving feedback the minutes will be finalized and distributed to members and placed on the website.

## *Meeting Close:*

9:25 am







# NEWCASTLE **SAND**

Community Consultative Committee Update

Project update for the period **September to December 2022**

For Meeting on 9 December 2022

# Meeting Agenda for the Cabbage Tree Road Sand Quarry Community Consultative Committee.

Friday 9 December 2022 at 9.00am

## Agenda Items:

- ▶ 1) Apologies
- ▶ 2) Declaration of pecuniary or other interests
- ▶ 3) Minutes to be adopted
- ▶ 4) Business arising from previous minutes - response to issues raised or provision of additional information requested
- ▶ 5) Correspondence
- ▶ 6) Proponents reports and overview of activities, including:
  - ▶ \* progress of the project
  - ▶ \* monitoring and environmental performance
  - ▶ \* community complaints and response to these complaints
  - ▶ \* information provided to the community and any feedback
- ▶ 7) Other agenda items
- ▶ 8) General business
- ▶ 9) Next meeting

# Actions from previous minutes

## September 2022

- ▶ Reminded staff of the need to register complaints in the system.
- ▶ A commercial contractor has been engaged on several occasions in addition to the site skid steer to sweep acceleration lane – wheel wash still delayed by wash plant relocation.
- ▶ Tubestock for Banksias and Eucalypts will be propagated for planting in 2023 from seed collected onsite (Tilligerry Habitat and/or Hunter Indigenous Plants to propagate).

# Correspondence

► Nil

# Community Complaints since September 2022

- ▶ Community complaints register available at:  
<https://www.newcastlesand.com.au/complaints-register/>
- ▶ 0 complaints / enquires reported in this period.

# Regulatory Correspondence

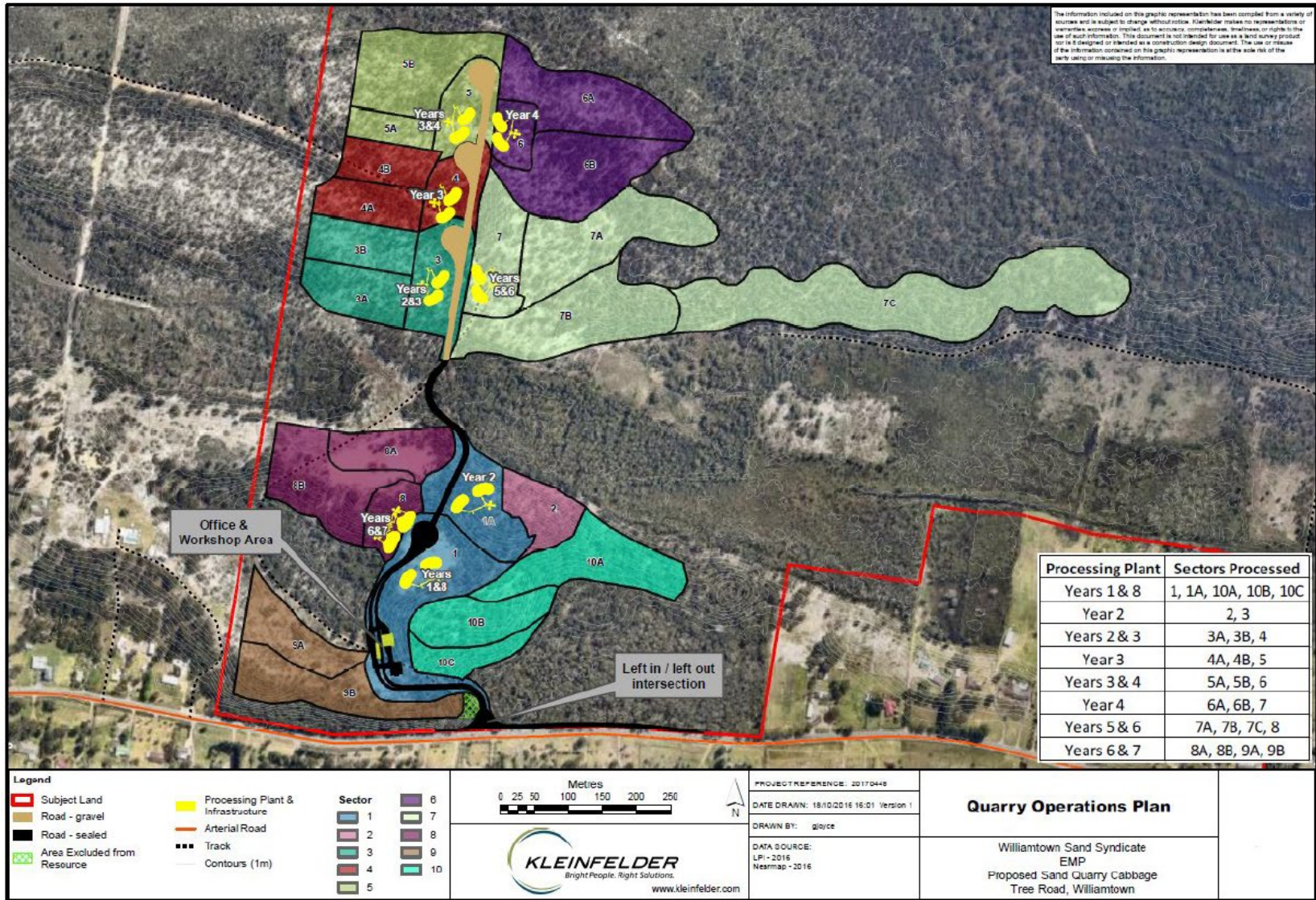
- ▶ Previous correspondence topic updates:
  - ▶ Water levels while still high are decreasing.
  - ▶ Zinc levels in BH2 have as expected declined since peaks earlier this year.
  - ▶ Management plans still being updated, should be lodged before Christmas 2022
- ▶ Had an inspection by DPE on 22 November, no major issues were noted on the day aside for the need to improve fence / delineation of site to ensure there is reduced risk of accidental impacts to outside the footprint, particularly where there are existing access tracks.
- ▶ Modification (as previously discussed) to be lodged shortly addressing operational changes (e.g. more excavator and truck use and campaign mulching), along with the extension areas that target some of the additional white sand that was within the original EIS.

# Key Activities Completed During this Period

- ▶ Cleared Sector 5 & 5A in September.
- ▶ Cleared Sector 5B south in October.
- ▶ Cleared Sector 7C south in October/November.
- ▶ Cleared Sector 5B north in November.
- ▶ Continued progressive extraction of sand from Sector 4, 5 and 7.
- ▶ Rehabilitation in Sector 3B, 4A, 4B and 1A/2
- ▶ Continued delays occur in getting the wash plant setup in Sector 3. These delays require additional haulage and delay the wheel wash installation.
- ▶ Seed collection has occurred during the period, have over 3kg of seed for hand broadcast and tubestock propagation.



# Key activities completed during this period






# Key Activities Completed During this Period

- ▶ Selling white, amber / washed (concrete), landscape and fill sand from the quarry.
- ▶ Haulage since September 2022 (also see later slides):
  - ▶ Averaged approximately 52% of monthly haulage allowance (up from 43% last period, and 24% before that, increased demand).
  - ▶ Busiest day occurred in November 2022 at 94.8% of daily haulage allowance.
  - ▶ Busiest month was October 2022 at 62.5% of monthly haulage allowance.
  - ▶ Haulage rate for November is highest since start of quarry.
- ▶ Weighbridge system is working well in helping regulating maximum haulage rates - system will not give driver a ticket unless under haulage rate.

# Monitoring - Trucks September 2022



NEWCASTLE SAND

September 2022

Monthly Summary of Traffic Movements			
(as per Condition 26 of Consent SSD_6125)			
Date	Total	Approved Maximum*	Percentage of Approved Movements
1-Sep	67	116	57.8%
2-Sep	59	116	50.9%
3-Sep	20	90	22.2%
5-Sep	79	116	68.1%
6-Sep	76	116	65.5%
7-Sep	79	116	68.1%
8-Sep	64	116	55.2%
9-Sep	61	116	52.6%
10-Sep	12	90	13.3%
12-Sep	70	116	60.3%
13-Sep	64	116	55.2%
14-Sep	76	116	65.5%
15-Sep	75	116	64.7%
16-Sep	54	116	46.6%
17-Sep	16	90	17.8%
19-Sep	44	116	37.9%
20-Sep	66	116	56.9%
21-Sep	56	116	48.3%
23-Sep	64	116	55.2%
24-Sep	1	90	1.1%
26-Sep	58	116	50.0%
27-Sep	54	116	46.6%
28-Sep	40	116	34.5%
29-Sep	45	116	38.8%
30-Sep	40	116	34.5%
Total trucks this month	1340		
Approved maximum for month*		2912	46.0%

Maximum approved haulage as per Condition 23 of Consent SSD\_6125:

- 6 trucks per hour from 6am to 7am Monday to Friday.


- 10 trucks per hour from 7am to 6pm Monday to Friday.

- 10 trucks per hour from 7am to 4pm on Saturday.

- No haulage on Public Holidays.

The weighbridge and ticketing system is routinely calibrated and managed by an accredited external business to ensure the sale and transport of sand from the quarry is consistent with approved haulage limits and operational times.

# Monitoring - Trucks October 2022



NEWCASTLE SAND

October 2022

Monthly Summary of Traffic Movements			
(as per Condition 26 of Consent SSD_6125)			
Date	Total	Approved Maximum*	Percentage of Approved Movements
4-Oct	97	116	83.6%
5-Oct	96	116	82.8%
6-Oct	87	116	75.0%
7-Oct	73	116	62.9%
8-Oct	4	90	4.4%
10-Oct	63	116	54.3%
11-Oct	86	116	74.1%
12-Oct	62	116	53.4%
13-Oct	64	116	55.2%
14-Oct	68	116	58.6%
15-Oct	11	90	12.2%
17-Oct	50	116	43.1%
18-Oct	63	116	54.3%
19-Oct	65	116	56.0%
20-Oct	74	116	63.8%
21-Oct	48	116	41.4%
22-Oct	3	90	3.3%
24-Oct	35	116	30.2%
25-Oct	36	116	31.0%
26-Oct	59	116	50.9%
27-Oct	56	116	48.3%
28-Oct	65	116	56.0%
29-Oct	16	90	17.8%
31-Oct	75	116	64.7%
Total trucks this month	1356		
Approved maximum for month*		2886	47.0%
* Maximum approved haulage as per Condition 23 of Consent SSD_6125: - 6 trucks per hour from 6am to 7am Monday to Friday. - 10 trucks per hour from 7am to 6pm Monday to Friday. - 10 trucks per hour from 7am to 4pm on Saturday. - No haulage on Public Holidays.			
The weighbridge and ticketing system is routinely calibrated and managed by an accredited external business to ensure the sale and transport of sand from the quarry is consistent with approved haulage limits and operational times.			

# Monitoring - Trucks November 2022



November 2022

Monthly Summary of Traffic Movements			
(as per Condition 26 of Consent SSD_6125)			
Date	Total	Approved Maximum*	Percentage of Approved Movements
1-Nov	99	116	85.3%
2-Nov	100	116	86.2%
3-Nov	82	116	70.7%
4-Nov	83	116	71.6%
5-Nov	9	90	10.0%
7-Nov	76	116	65.5%
8-Nov	58	116	50.0%
9-Nov	79	116	68.1%
10-Nov	66	116	56.9%
11-Nov	82	116	70.7%
12-Nov	17	90	18.9%
14-Nov	75	116	64.7%
15-Nov	81	116	69.8%
16-Nov	76	116	65.5%
17-Nov	72	116	62.1%
18-Nov	69	116	59.5%
19-Nov	31	90	34.4%
21-Nov	92	116	79.3%
22-Nov	71	116	61.2%
23-Nov	110	116	94.8%
24-Nov	77	116	66.4%
25-Nov	73	116	62.9%
26-Nov	15	90	16.7%
28-Nov	65	116	56.0%
29-Nov	79	116	68.1%
30-Nov	82	116	70.7%
Total trucks this month	1819		
Approved maximum for month*		2912	62.5%
<p>* Maximum approved haulage as per Condition 23 of Consent SSD_6125:</p> <ul style="list-style-type: none"> <li>- 6 trucks per hour from 6am to 7am Monday to Friday.</li> <li>- 10 trucks per hour from 7am to 6pm Monday to Friday.</li> <li>- 10 trucks per hour from 7am to 4pm on Saturday.</li> <li>- No haulage on Public Holidays.</li> </ul>			
<p>The weighbridge and ticketing system is routinely calibrated and managed by an accredited external business to ensure the sale and transport of sand from the quarry is consistent with approved haulage limits and operational times.</p>			

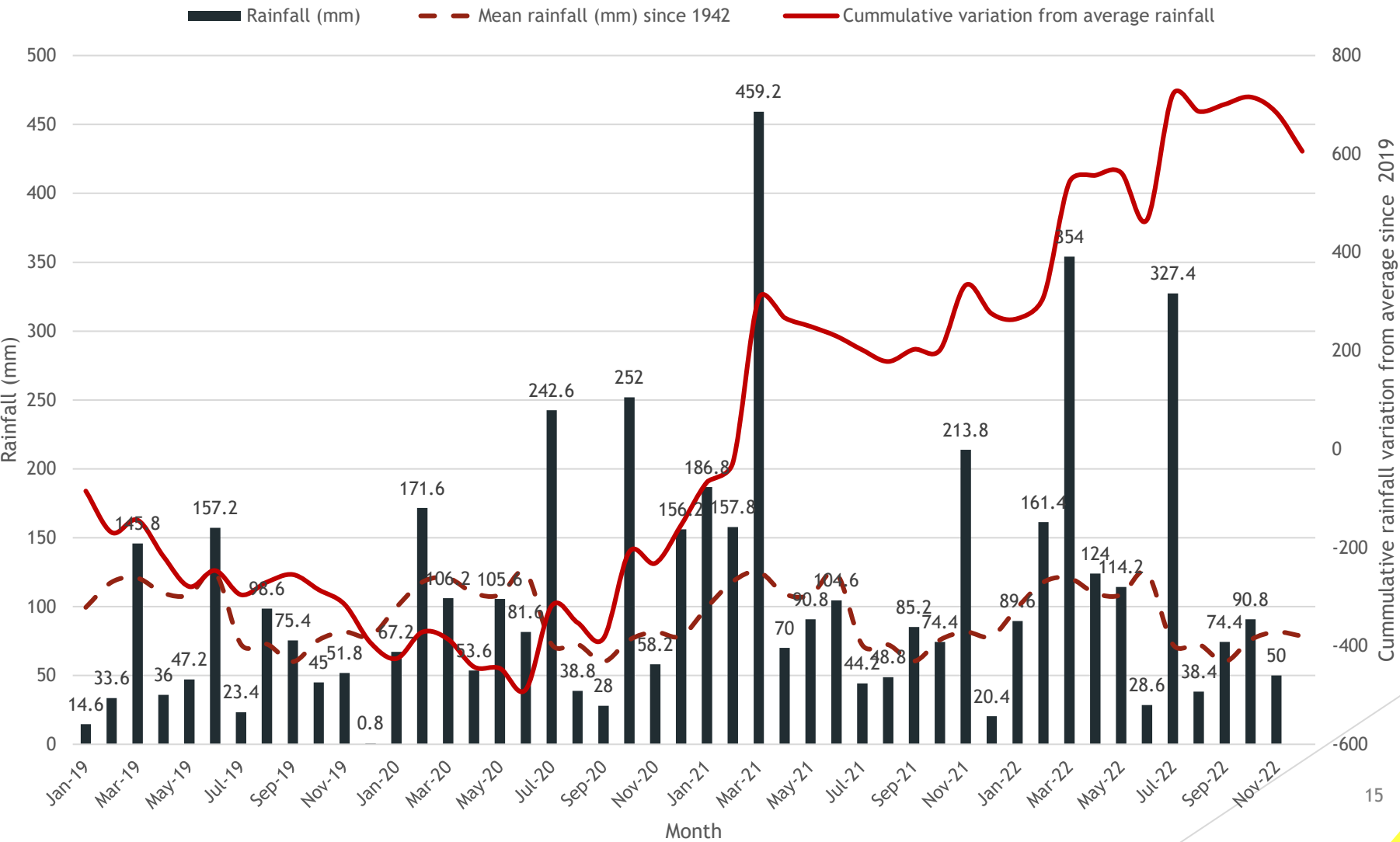
# Environmental Monitoring - Rainfall

- ▶ Annual average rainfall at Williamtown is 1127mm.
- ▶ 2019 rainfall had a total of 729mm.
- ▶ 2020 rainfall (recovered second half of year) above average with 1362mm.
- ▶ 2021 rainfall above average with 1556mm.
- ▶ 2022 rainfall to 30 November, is 1452 mm (with average rainfall will be similar to 2021).
- ▶ Cumulatively over the last 3 months, we have had 4mm below average (September 2022 above average, October 2022 above average, November 2022 below average).

# Environmental Monitoring - Flora / Fauna

- ▶ Continue to collect regular monitoring with cameras across the site.
- ▶ Foxes observed onsite.
- ▶ Active fox den found near entrance of quarry (2 adults, 4-5 pups/young adults) - included numerous carcasses of different species (including chickens, birds, eagle, wallaby etc).
- ▶ Licenced contractor engaged to treat the fox den, now completed and appears to have been successful.
- ▶ Threatened frog species survey occurred in November. Threatened frogs found in some areas, no changes in occurrence seen to be due to the quarry. Wet weather / high water levels have likely changed the known distribution patterns.
- ▶ First round of rehabilitation monitoring completed, results to be compiled, initial thoughts are that timber density is high (even when compliant with management plan) and could be lowered to improve plant cover.

# Environmental Monitoring - Water



# Environmental Monitoring - Water

- ▶ Continuous logging of groundwater depth data at several wells across site.
- ▶ Groundwater and surface water sampled on monthly basis, results available on the website <https://www.newcastlesand.com.au/monitoring-results/>.
- ▶ Water levels have been high due to rainfall, highest levels (relative to the quarry floor) are located at the northern side of the quarry. Weekly checks have been occurring to monitor changes. In the north west of site levels have dropped over 400mm since September and continuing to drop rapidly, elsewhere levels have dropped around 300mm with a slower decline.
- ▶ MED Report to be finalised with review of recent rainfall and water levels, should be lodged shortly for review by HWC and DPE.
- ▶ Low levels of PFAS are sporadically found in wash plant water, levels are not consistent and below criteria.



# Environmental Monitoring - Noise

- ▶ Quarterly monitoring - last one in late September, next one in December.
- ▶ Completed by Spectrum Acoustics - attended monitoring
- ▶ 30 minute (morning-shoulder) and 1.5 hour (day) compliance measurement periods for three consecutive days
- ▶ Typical results below, quarry activities inaudible

Table 5 NS Operational Noise Monitoring Results – 21 September 2022 (Morning-Shoulder)						
Location	Time	dB(A), Leq	Criterion dB(A) Leq	dB(A), L1 (1min) <sup>1</sup>	Criterion dB(A), L1 (1min) <sup>1</sup>	Identified Noise Sources, LAeq
R42	6:30am	67	39	<20	45	Traffic (67), birds (34), NS (IA)

1. L1 (1 min) from NS mine noise only.

Table 6 NS Operational Noise Monitoring Results – 21 September 2022 (Day)				
Location	Time	dB(A), Leq	Criterion dB(A) Leq	Identified Noise Sources, LAeq
R42	7:01am	66	43	Traffic (66), birds (35), NS (IA)

# Environmental Monitoring - Air

- ▶ Network includes two Beta Attenuation Monitors (BAMs) that measure real-time particulate matter smaller than 10 micron (PM10).
  - ▶ These record average value every 15 minutes continuously.
- ▶ Two High Volume Air Sampler (HVAS) one measuring PM10 and one measuring total suspended particulates (TSP).
  - ▶ These run for 24 hours every six days.
- ▶ Quarry must implement all reasonable and feasible avoidance and mitigation measures so particulate emissions from quarry do not cause exceedance of:
  - ▶ PM10 annual average  $25 \mu\text{g}/\text{m}^3$  cumulative.
  - ▶ Quarry PM10 contribution over 24 hour average  $50 \mu\text{g}/\text{m}^3$ .

# Environmental Monitoring - Air

- ▶ Air quality has improved or remained similar to those at previous meeting:
  - ▶ Annual average PM10 levels measured with HVAS at 350 Cabbage Tree Road to end October 2022 is 10.0  $\mu\text{g}/\text{m}^3$  (was 10.9 in August 22) against 25  $\mu\text{g}/\text{m}^3$  criteria.
  - ▶ Annual average PM10 measured with BAM at 393 Cabbage Tree Road to end of November 2022 is 10.4  $\mu\text{g}/\text{m}^3$  (was 11.4 in August 22) against 25  $\mu\text{g}/\text{m}^3$  criteria.
  - ▶ Annual average PM10 measured with BAM at 442 Cabbage Tree Road to end of October 2022 is 6.5  $\mu\text{g}/\text{m}^3$  (was 5.6 in August 22) against 25  $\mu\text{g}/\text{m}^3$  criteria. Machine currently under repair.
  - ▶ TSP levels measured with HVAS at 393 Cabbage Tree Road to end October 2022 is 23.3  $\mu\text{g}/\text{m}^3$  (was 24.6 in August 22) against 90  $\mu\text{g}/\text{m}^3$  criteria.
- ▶ Air quality model in assessment used an assumed annual average background of 19.4  $\mu\text{g}/\text{m}^3$ .
- ▶ Data summarised online at: <https://www.newcastlesand.com.au/air-quality/>

# The site from Sept 2022 to Nov 2022



Extraction in Section 4B - looking east (new wash plant location in background)



# The site from Sept 2022 to Nov 2022



Topsoil stockpiled on the floor of Sector 4B, washplant fines blended into floor.



# The site from Sept 2022 to Nov 2022



View through Section 3B to 4 extraction face at 5B



# The site from Sept 2022 to Nov 2022



Section 7 rehab area



# The site from Sept 2022 to Nov 2022



Section 7, flowering, density slowly increasing



# The site from Sept 2022 to Nov 2022



Section 7, recently cleared for extraction.



# The site from Sept 2022 to Nov 2022



Section 7, wild hive found during clearing - reported to DPI



# The site from Sept 2022 to Nov 2022



○ 21°C 2022/10/10 17:12:49

Active den on left, fox cub with eagle?, and treated den on right





Questions?

We wish you all a  
safe and merry  
Christmas!

# More Information

- ▶ [www.newcastlesand.com.au](http://www.newcastlesand.com.au)
- ▶ Quarry Manager - 0402 648 079
- ▶ [info@newcastlesand.com.au](mailto:info@newcastlesand.com.au)