

Williamtown Sand Syndicate (WSS) Cabbage Tree Road Sand Quarry Community Consultative Committee Meeting

28 March 2023

9:02-9:35am

Mercure Newcastle Airport

Meeting Number:	11 th Meeting	Type of meeting:	General
Chairperson:	John Turner - JT	Note taker:	Jonathan Berry
Attendees:	Wayne Sampson (Resident) – WS Shirley Davis (Resident) – SD Stephen Kuehn (Resident) – SK Paul Hardes (Resident) – PH John Simpson (Hunter Water Representative) – JS Eliott Laver (Newcastle Sand) - EL Jonathan Berry (Wedgetail Project Consulting) – JB		
Apologies:	Greg Callaghan (Resident) – GC Peter West (Resident) – PW Barry Davis (Resident) – BD Darren Williams (WSS) – DW		
Observers:	None		
Meeting Open:	9:02am		

Minutes

Agenda item: 1	Apologies	Presenter:	John Turner
-----------------------	------------------	-------------------	-------------

Discussion:

Peter West (Resident) – PW
Barry Davis (Resident) – BD
Greg Callaghan (Resident) – GC
Darren Williams (WSS) – DW

Agenda item: 2	Declaration of Pecuniary Interest	Presenter:	NA
-----------------------	--	-------------------	----

Discussion:

John Turner (Chairperson) – Paid for service by WSS.
Wayne Sampson (Resident) – Deed with WSS.
Jonathan Berry (Wedgetail Project Consulting) – Consultant employed by WSS.
Shirley Davis (Resident) – Nil.
Greg Callaghan (Resident) – Deed with WSS
Paul Hardes (Resident) – Deed with WSS

Stephen Kuehn (Resident) – Deed with WSS
Elliott Laver - Employed as Quarry Manager by Newcastle Sand

Agenda item: 3 Minutes to be adopted **Presenter:** John Turner

Discussion:

Minutes from the last meeting were noted.
Minutes moved by JS. Minutes seconded by SK. All Agree.

Agenda item: 4 Business Arising from Previous Minutes **Presenter:** JT

- Response to issues raised or provision of additional information requested;
- Nil

Agenda item: 5 Correspondence **Presenter:** John Turner

- See presentation.

Agenda item: 6 Proponents reports & overview of activities, including; **Presenter:** Jonathan Berry

- Progress of the project
- Monitoring & environmental performances
- Community complaints & responses to these complaints
- Information provided to the community and any feedback

JB – Gave presentation of slides (attached).
EL – Commented on the management of truck drivers that are not adhering to the Code of Conduct, including banning drivers from site.
SD – Commented that she suspects its workers that they see turning right into site given they don't see them leave.
EL – Will discuss this with the Team, but would be good to have some details of the vehicles when observed if possible.
EL – Noted motorbikes were observed onsite a few weeks back, and a Tractor also came onto site.
SD – Sunday is a big day for motor bike riders.
JB – The timber on rehabilitation is effective in reducing illegal motorbike riding within the site.
PH – Noted some days depending on wind direction noise levels are much more audible than others.
JS – Noise levels in the afternoon with a different wind would be interesting to see if its more audible [in context of noise monitoring showing quarry is inaudible].
JB – Noise monitoring times dictated by the EPL.
SD – Is the timber placed on the rehabilitation a problem for bushfire.
JS – As the fine fuel breaks down, what is remaining is typically not a problem for bushfire.
JS – Will be interested to see the outcome of the timber density considerations for rehabilitation and timber management.
WS – Anymore dogs observed onsite?
EL – Not within cameras of late, but HWC trapper noted another round of management was planned soon.

Action items	Person responsible	Deadline
✓ Nil		
✓		
✓		

Agenda item: 7 Other Agenda Items **Presenter:** John Turner

Discussion:

JT – There were no other agenda items received.

Agenda item: 8 General Business **Presenter:** John Turner

Discussion:

JT – Is there any general business?

Action items	Person responsible	Deadline
✓ SD – Can someone please drop off a copy of the minutes to my letter box?	Newcastle Sand will drop of a	When completed
✓	copy	

Agenda item: 9 Next Meeting **Presenter:** John Turner

Discussion:

JT – The meeting is now closed at 9:35am, the next meeting to be advised.

Action items	Person responsible	Deadline
None.		

Other Information

- Minutes to be provided as draft in the next week.
- Committee members have one week to provide feedback on the minutes to the Chairperson.
- Within two weeks of receiving feedback the minutes will be finalized and distributed to members and placed on the website.

Meeting Close:

9:35 am



NEWCASTLE **SAND**

Community Consultative Committee Update

Project update for the period **December 2022 to March 2023**

For Meeting on 28 March 2023

Meeting Agenda for the Cabbage Tree Road Sand Quarry Community Consultative Committee.

Tuesday 28 March 2023 at 9.00am

Agenda Items:

- ▶ 1) Apologies
- ▶ 2) Declaration of pecuniary or other interests
- ▶ 3) Minutes to be adopted
- ▶ 4) Business arising from previous minutes - response to issues raised or provision of additional information requested
- ▶ 5) Correspondence
- ▶ 6) Proponents reports and overview of activities, including:
 - ▶ * progress of the project
 - ▶ * monitoring and environmental performance
 - ▶ * community complaints and response to these complaints
 - ▶ * information provided to the community and any feedback
- ▶ 7) Other agenda items
- ▶ 8) General business
- ▶ 9) Next meeting

Actions from previous minutes December 2022

- ▶ Copy of minutes dropped off to SD

Correspondence

► Nil

Community Complaints since December 2022

- ▶ Community complaints register available at:
<https://www.newcastlesand.com.au/complaints-register/>
- ▶ 0 complaints received this period, however 5 complaints added to register, for previous period:
 - ▶ In late December, DPE notified Newcastle Sand of complaint of several trucks entering site before 7am on Saturday in early December.
 - ▶ In late December, DPE notified Newcastle Sand of a right turn into the site by a ute with aluminium tray.
 - ▶ In late December, DPE notified Newcastle Sand of two trucks that used compression braking when accessing the site.
 - ▶ Two complaints were added from September where trucks left the quarry uncovered.
- ▶ In all of the above cases, Newcastle Sand has investigated the complaint and issued reminders and or warnings to vehicle drivers. Early trucks (independent of the complaint system) are routinely turned away from site without sand if found to be disregarding the Driver Code of Conduct.

Regulatory Correspondence

- ▶ Modification 3 that was previously lodged in December 22 is being finalised for re-lodgement based on correspondence received from DPE, key aspects of Mod3 are:
 - ▶ Increasing area of footprint by less than 7% to recover additional sand (including white sand) and improve access.
 - ▶ Increase annual sand extraction volume by 9.5% to 580,000 tonnes, no increase in hourly haulage rates. On average, less than six additional trucks per day.
 - ▶ Amending the biodiversity offsets strategy to match current legislation.
 - ▶ Clarify operational methods (excavator and haul truck and diesel generator) and provide additional options for timber management onsite.
 - ▶ Amend the Statement of Commitments, many are duplicated or superseded by management plans.
- ▶ Continued discussions with DPE with respect to clarification of extraction boundary, DPE have requested additional flagging in addition to the frog/silt fence, mown track and the steel pegs with signs currently used.
- ▶ Inspection by DPE on 15 March 23, noted the road sign was not operating due to stolen battery and that the wash plant appears to be a well thought out system.

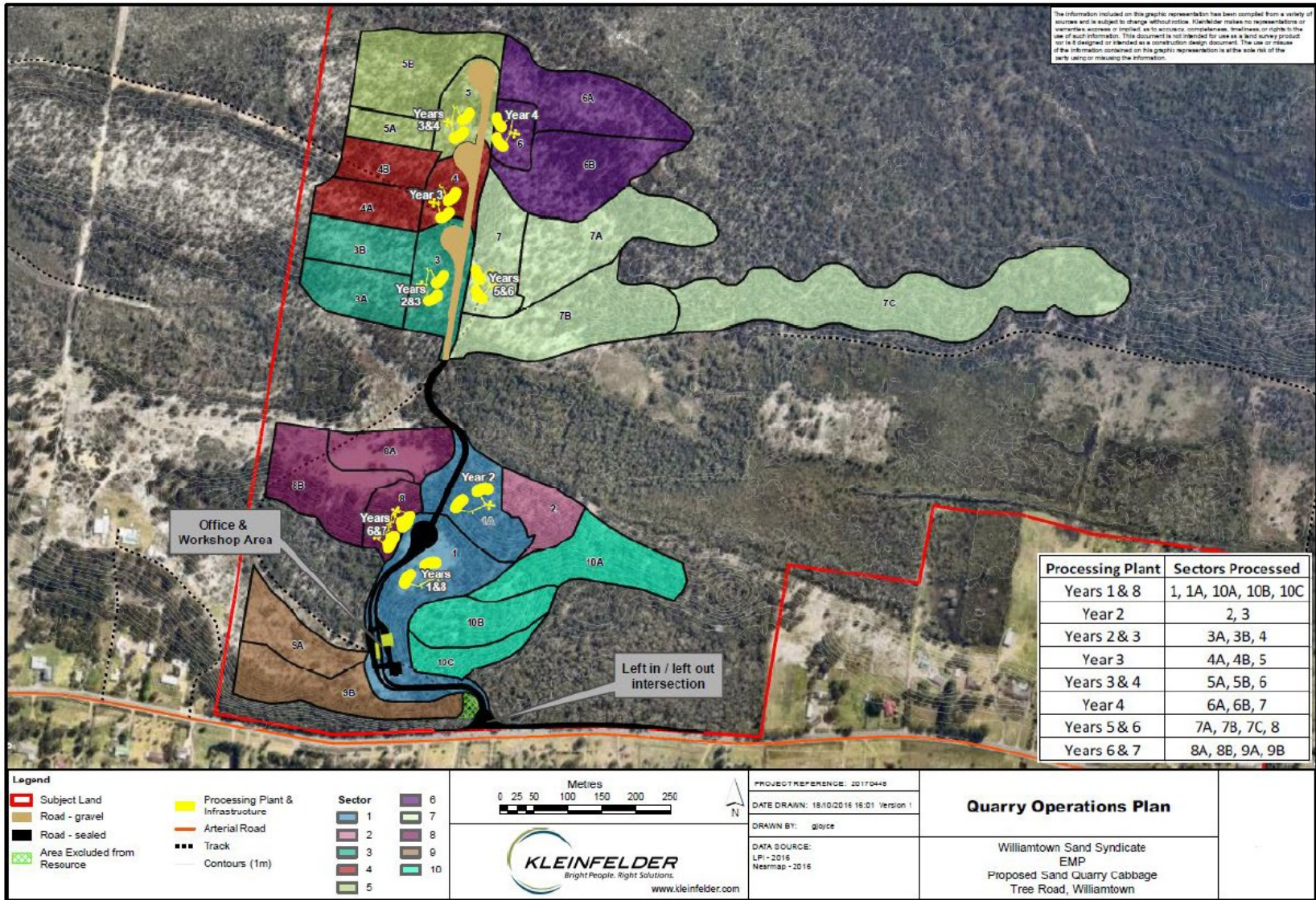
Regulatory Correspondence

- ▶ DPE Water have made comment on the revised MED Report. The groundwater specialist currently resolving comments. Comments included:
 - ▶ Updating of the groundwater model, including additional independent review.
 - ▶ Ensure quarry remains compliant with groundwater levels and extraction.
 - ▶ Replace decommissioned bores [several new bores have been commissioned].
 - ▶ Add another logger in BH10 [seems unnecessary given quarry now moving away from BH10].
 - ▶ Improve accuracy of the loggers in the network.
 - ▶ Comment on groundwater licencing for the project [no water taken, no licence required].

Key Activities Completed During this Period

- ▶ Cleared Sector 6, 6A and 6B in January.
- ▶ Continued progressive extraction of sand from Sector 5, 5B, 6, 6A and 6B.
- ▶ Rehabilitation in Sector 4A, 4B, 5A and 5B.
- ▶ Wash plant relocation has been completed and is now operational in Sector 3.
- ▶ Seed collected onsite during 2022 sent to Tilligerry Habitat for propagation. Tubestock for Banksias and Eucalypts will be planted in 2023.


Key activities completed during this period



Key Activities Completed During this Period

- ▶ Selling white, amber / washed (concrete), landscape and fill sand from the quarry.
- ▶ Haulage since December 2022 (also see later slides):
 - ▶ Averaged approximately 38% of monthly haulage allowance (Down from 52% last period, and 43% before that, holiday reductions).
 - ▶ Busiest day occurred in December 2022 at 87.9% of daily haulage allowance.
 - ▶ Busiest month was December 2022 at 46.6% of monthly haulage allowance.
- ▶ Weighbridge system is working well in helping regulating maximum haulage rates - system will not give driver a ticket unless under haulage rate.

Monitoring - Trucks December 2022




NEWCASTLE SAND

December 2022

Monthly Summary of Traffic Movements			
(as per Condition 26 of Consent SSD_6125)			
Date	Total	Approved Maximum*	Percentage of Approved Movements
1-Dec	76	116	65.5%
2-Dec	63	116	54.3%
3-Dec	35	90	38.9%
5-Dec	74	116	63.8%
6-Dec	77	116	66.4%
7-Dec	73	116	62.9%
8-Dec	80	116	69.0%
9-Dec	89	116	76.7%
10-Dec	19	90	21.1%
12-Dec	79	116	68.1%
13-Dec	88	116	75.9%
14-Dec	84	116	72.4%
15-Dec	85	116	73.3%
16-Dec	101	116	87.1%
17-Dec	21	90	23.3%
19-Dec	81	116	69.8%
20-Dec	102	116	87.9%
21-Dec	81	116	69.8%
22-Dec	66	116	56.9%
23-Dec	25	116	21.6%

Monitoring - Trucks January 2023



NEWCASTLE SAND

January 2023

Monthly Summary of Traffic Movements

(as per Condition 26 of Consent SSD_6125)

Date	Total	Approved Maximum*	Percentage of Approved Movements
3-Jan	7	116	6.0%
4-Jan	8	116	6.9%
5-Jan	6	116	5.2%
6-Jan	7	116	6.0%
7-Jan	3	90	3.3%
9-Jan	56	116	48.3%
10-Jan	50	116	43.1%
11-Jan	50	116	43.1%
12-Jan	38	116	32.8%
13-Jan	50	116	43.1%
14-Jan	9	90	10.0%
16-Jan	59	116	50.9%
17-Jan	53	116	45.7%
18-Jan	58	116	50.0%
19-Jan	47	116	40.5%
20-Jan	42	116	36.2%
21-Jan	5	90	5.6%
23-Jan	70	116	60.3%
24-Jan	69	116	59.5%
25-Jan	44	116	37.9%
27-Jan	39	116	33.6%
28-Jan	4	90	4.4%
30-Jan	50	116	43.1%
31-Jan	32	116	27.6%
Total trucks this month	856		
Approved maximum for month*		2796	30.6%

* Maximum approved haulage as per Condition 23 of Consent SSD_6125:

- 6 trucks per hour from 6am to 7am Monday to Friday.

- 10 trucks per hour from 7am to 6pm Monday to Friday.

- 10 trucks per hour from 7am to 4pm on Saturday.

- No haulage on Public Holidays.

The weighbridge and ticketing system is routinely calibrated and managed by an accredited external business to ensure the sale and transport of sand from the quarry is consistent with approved haulage limits and operational times.

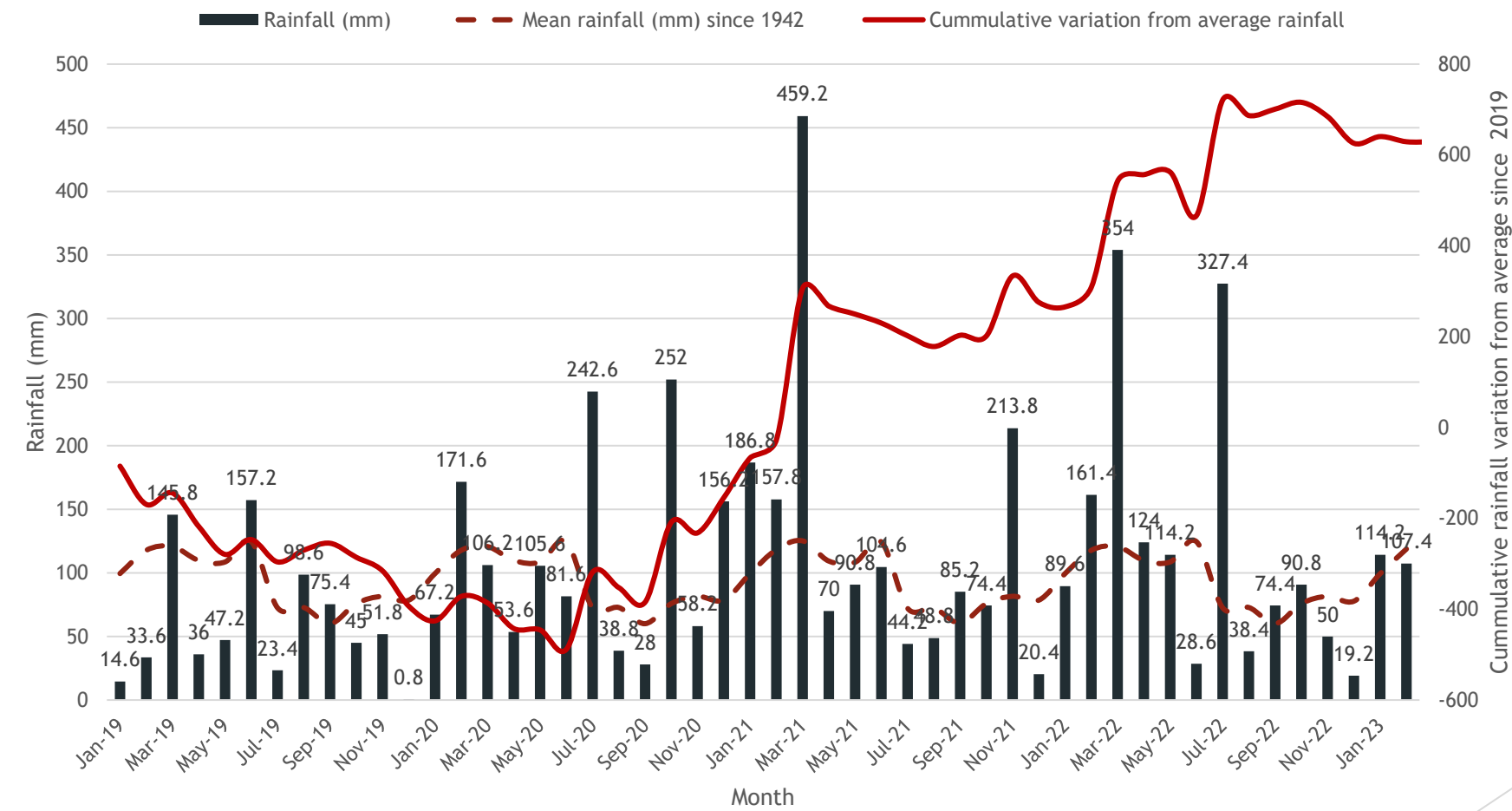
Environmental Monitoring - Rainfall

- ▶ Annual average rainfall at Williamtown is 1127mm.
- ▶ 2019 rainfall had a total of 729mm.
- ▶ 2020 rainfall (recovered second half of year) above average with 1362mm.
- ▶ 2021 rainfall above average with 1556mm.
- ▶ 2022 rainfall above average with 1472 mm.
- ▶ Cumulatively over the last 3 months, we have had 55mm below average (December 2022 below average, January 2023 above average, February 2023 below average).

Environmental Monitoring - Flora / Fauna

- ▶ Continue to collect regular monitoring with cameras across the site.
- ▶ Foxes observed onsite again.
- ▶ Second active fox den found near entrance of quarry.
- ▶ Licenced contractor engaged to treat the fox den.
- ▶ Threatened frog species survey occurred in January. Threatened frogs found in some areas, no changes in occurrence seen to be due to the quarry. Wet weather / high water levels have likely changed the known distribution patterns.
- ▶ Second round of rehabilitation monitoring completed, results to be compiled.

Environmental Monitoring - Water



Environmental Monitoring - Water

- ▶ Continuous logging of groundwater depth data at several wells across site.
- ▶ Groundwater and surface water sampled on monthly basis, results available on the website <https://www.newcastlesand.com.au/monitoring-results/>.
- ▶ Water levels have been high due to rainfall, highest levels (relative to the quarry floor) are located at the northern side of the quarry. Weekly checks have been occurring to monitor changes. In the north west of site levels have dropped over 1.4m since September 2022 and continuing to drop rapidly. Elsewhere levels have dropped around 300mm with a slower decline.
- ▶ Revised MED Report under review following DPE-Water comments.
- ▶ Low levels of PFAS are sporadically found in wash plant water, levels are not consistent and below criteria.

Environmental Monitoring - Noise

- ▶ Quarterly monitoring - last one in late December, next one in March.
- ▶ Completed by Spectrum Acoustics - attended monitoring
- ▶ 30 minute (morning-shoulder) and 1.5 hour (day) compliance measurement periods for three consecutive days
- ▶ December monitoring undertaken during Christmas shutdown. Results indistinguishable to September monitoring results, this shows the quarry is inaudible.

Table 5 NS Operational Noise Monitoring Results – 21 September 2022 (Morning-Shoulder)						
Location	Time	dB(A), Leq	Criterion dB(A) Leq	dB(A), L1 (1min) ¹	Criterion dB(A), L1 (1min) ¹	Identified Noise Sources, LAeq
R42	6:30am	67	39	<20	45	Traffic (67), birds (34), NS (IA)

1. L1 (1 min) from NS mine noise only.

Table 6 NS Operational Noise Monitoring Results – 21 September 2022 (Day)				
Location	Time	dB(A), Leq	Criterion dB(A) Leq	Identified Noise Sources, LAeq
R42	7:01am	66	43	Traffic (66), birds (35), NS (IA)

Table 5 NS Operational Noise Monitoring Results – 30 December 2022 (Morning-Shoulder)						
Location	Time	dB(A), Leq	Criterion dB(A) Leq	dB(A), L1 (1min) ¹	Criterion dB(A), L1 (1min) ¹	Identified Noise Sources, LAeq
R42	6:30am	66	39	<20	45	Traffic (66), birds (31), NS (IA)

1. L1 (1 min) from NS mine noise only.

Table 6 NS Operational Noise Monitoring Results – 30 December 2022 (Day)				
Location	Time	dB(A), Leq	Criterion dB(A) Leq	Identified Noise Sources, LAeq
R42	7:00am	66	43	Traffic (66), birds (33), NS (IA)

Environmental Monitoring - Air

- ▶ Network includes two Beta Attenuation Monitors (BAMs) that measure real-time particulate matter smaller than 10 micron (PM10).
 - ▶ These record average value every 15 minutes continuously.
- ▶ Two High Volume Air Sampler (HVAS) one measuring PM10 and one measuring total suspended particulates (TSP).
 - ▶ These run for 24 hours every six days.
- ▶ Quarry must implement all reasonable and feasible avoidance and mitigation measures so particulate emissions from quarry do not cause exceedance of:
 - ▶ PM10 annual average $25 \mu\text{g}/\text{m}^3$ cumulative.
 - ▶ Quarry PM10 contribution over 24 hour average $50 \mu\text{g}/\text{m}^3$.

Environmental Monitoring - Air

- ▶ Air quality has improved or remained similar to those at previous meeting:
 - ▶ Annual average PM10 levels measured with HVAS at 350 Cabbage Tree Road to end February 2023 is 9.7 $\mu\text{g}/\text{m}^3$ (was 10.0 in November 2022) against 25 $\mu\text{g}/\text{m}^3$ criteria.
 - ▶ Annual average PM10 measured with BAM at 393 Cabbage Tree Road to end of February 2023 is 10.4 $\mu\text{g}/\text{m}^3$ (was 10.4 in November 2022) against 25 $\mu\text{g}/\text{m}^3$ criteria.
 - ▶ Annual average PM10 measured with BAM at 442 Cabbage Tree Road to end of February 2023 is 7.3 $\mu\text{g}/\text{m}^3$ (was 6.5 in November 2022) against 25 $\mu\text{g}/\text{m}^3$ criteria. Machine currently under repair.
 - ▶ TSP levels measured with HVAS at 393 Cabbage Tree Road to end February 2023 is 26.7 $\mu\text{g}/\text{m}^3$ (was 23.3 in November 2022) against 90 $\mu\text{g}/\text{m}^3$ criteria.
- ▶ Air quality model in assessment used an assumed annual average background of 19.4 $\mu\text{g}/\text{m}^3$.
- ▶ Data summarised online at: <https://www.newcastlesand.com.au/air-quality/>

The site from Jan to Mar 2023



Jan 2023 - following clearing in Sector 6A, looking toward the wash plant. This is current extraction area

The site from Jan to Mar 2023



Jan 2023 - Looking across Sector 5A following extraction, prior to topsoil spreading

The site from Jan to Mar 2023



Jan 2023 - gates installed at boundary of access tracks to help address concerns by DPE

The site from Jan to Mar 2023



Looking east over rehab in Sector 4A / 3B toward wash plant in background

The site from Jan to Mar 2023



Northern portion of Sector 5, placement of timber has commenced, expect to be completed in this area over next month

The site from Jan to Mar 2023



Sector 3A rehab, plant growth accelerated significantly in last quarter

The site from Jan to Mar 2023



Section 7 rehab - November 2022



Section 7 rehab - January 2022



Section 7 rehab - March 2023

The site from Jan to Mar 2023



Sector 7, starting to progress well, after initial delays in cover

The site from Jan to Mar 2023



Sector 7, higher density of brush and timber appears to relate to increased canopy species being present.

Questions?

More Information

- ▶ www.newcastlesand.com.au
- ▶ Quarry Manager - 0402 648 079
- ▶ info@newcastlesand.com.au