

Williamtown Sand Syndicate (WSS) Cabbage Tree Road Sand Quarry Community Consultative Committee Meeting

06 June 2023

9:00-9:20am

Mercure Newcastle Airport

| | | | |
|------------------------|---|-------------------------|----------------|
| Meeting Number: | 12 th Meeting | Type of meeting: | General |
| Chairperson: | John Turner - JT | Note taker: | Jonathan Berry |
| Attendees: | Wayne Sampson (Resident) – WS Shirley Davis (Resident) – SD Stephen Kuehn (Resident) – SK Paul Hardes (Resident) – PH Elliott Laver (Newcastle Sand) - EL Jonathan Berry (Wedgetail Project Consulting) – JB | | |
| Apologies: | Greg Callaghan (Resident) – GC Peter West (Resident) – PW Barry Davis (Resident) – BD Darren Williams (WSS) – DW John Simpson (Hunter Water Representative) – JS | | |
| Observers: | None | | |
| Meeting Open: | 9:00am | | |

Minutes

| | | | |
|-----------------------|------------------|-------------------|-------------|
| Agenda item: 1 | Apologies | Presenter: | John Turner |
|-----------------------|------------------|-------------------|-------------|

Discussion:

Peter West (Resident) – PW
Barry Davis (Resident) – BD
Greg Callaghan (Resident) – GC
Darren Williams (WSS) – DW
John Simpson (Hunter Water Representative) – JS

| | | | |
|-----------------------|--|-------------------|----|
| Agenda item: 2 | Declaration of Pecuniary Interest | Presenter: | NA |
|-----------------------|--|-------------------|----|

Discussion:

John Turner (Chairperson) – Paid for service by WSS.
Wayne Sampson (Resident) – Deed with WSS.
Jonathan Berry (Wedgetail Project Consulting) – Consultant employed by WSS.
Shirley Davis (Resident) – Nil.
Greg Callaghan (Resident) – Deed with WSS

Paul Hardes (Resident) – Deed with WSS
 Stephen Kuehn (Resident) – Deed with WSS
 Elliott Laver - Employed as Quarry Manager by Newcastle Sand

Agenda item: 3 Minutes to be adopted **Presenter:** John Turner

Discussion:

Minutes from the last meeting were noted.
 Minutes moved by WS. Minutes seconded by SK. All Agree.

Agenda item: 4 Business Arising from Previous Minutes **Presenter:** JT

- Response to issues raised or provision of additional information requested;
- Nil

Agenda item: 5 Correspondence **Presenter:** John Turner

- See presentation.

Agenda item: 6 Proponents reports & overview of activities, including; **Presenter:** Jonathan Berry

- Progress of the project
- Monitoring & environmental performances
- Community complaints & responses to these complaints
- Information provided to the community and any feedback

JB – Gave presentation of slides (attached), discussion on slides below.
 WS – Anymore dogs observed onsite?
 EL – Hard to say, certainly foxes, another control campaign coming up.
 WS – Where is the PFAS tested?
 JB – At ALS in Warabrook.
 EL – The number of motorbikes observed has reduced.
 SD – How deep is the sand?
 JB – Indicatively, the dredge at the time of RZM went at least another 15m deeper than the floor of the quarry.
 PH – How long do you have left onsite?
 EL – We would estimate another 3-4 years.
 JB – Before we started we thought about 8 years, but if rates were higher could be done in about 6 years, we are currently about 3 years in, so pretty close to what was expected if not a little faster.

| Action items | Person responsible | Deadline |
|--------------|--------------------|----------|
| ✓ Nil | | |
| ✓ | | |
| ✓ | | |

Agenda item: 7 Other Agenda Items **Presenter:** John Turner

Discussion:

JT – There were no other agenda items received.

Agenda item: 8 General Business **Presenter:** John Turner

Discussion:

JT – Is there any general business?

| Action items | Person responsible | Deadline |
|--|-------------------------------|----------------|
| ✓ SD – Can someone please drop off a copy of the minutes to my letter box? | Newcastle Sand will drop of a | When completed |
| ✓ | copy | |

Agenda item: 9 Next Meeting **Presenter:** John Turner

Discussion:

JT – The meeting is now closed at 9:20am, the next meeting to be advised.

| Action items | Person responsible | Deadline |
|--------------|--------------------|----------|
| None. | | |

Other Information

- Minutes to be provided as draft in the next week.
- Committee members have one week to provide feedback on the minutes to the Chairperson.
- Within two weeks of receiving feedback the minutes will be finalized and distributed to members and placed on the website.

Meeting Close:

9:20 am



NEWCASTLE **SAND**

Community Consultative Committee Update
Project update for the period **March to June 2023**

For Meeting on 6 June 2023

Meeting Agenda for the Cabbage Tree Road Sand Quarry Community Consultative Committee.

Tuesday 6 June 2023 at 9.00am

Agenda Items:

- ▶ 1) Apologies
- ▶ 2) Declaration of pecuniary or other interests
- ▶ 3) Minutes to be adopted
- ▶ 4) Business arising from previous minutes - response to issues raised or provision of additional information requested
- ▶ 5) Correspondence
- ▶ 6) Proponents reports and overview of activities, including:
 - ▶ * progress of the project
 - ▶ * monitoring and environmental performance
 - ▶ * community complaints and response to these complaints
 - ▶ * information provided to the community and any feedback
- ▶ 7) Other agenda items
- ▶ 8) General business
- ▶ 9) Next meeting

Actions from previous minutes

March 2023

- ▶ Copy of minutes dropped off to SD

Correspondence

► Nil

Community Complaints since March 2023

- ▶ Community complaints register available at:
<https://www.newcastlesand.com.au/complaints-register/>
- ▶ 1 complaint received this period.
 - ▶ A truck was reported entering the site before 7am on Saturday 13 May 2023.

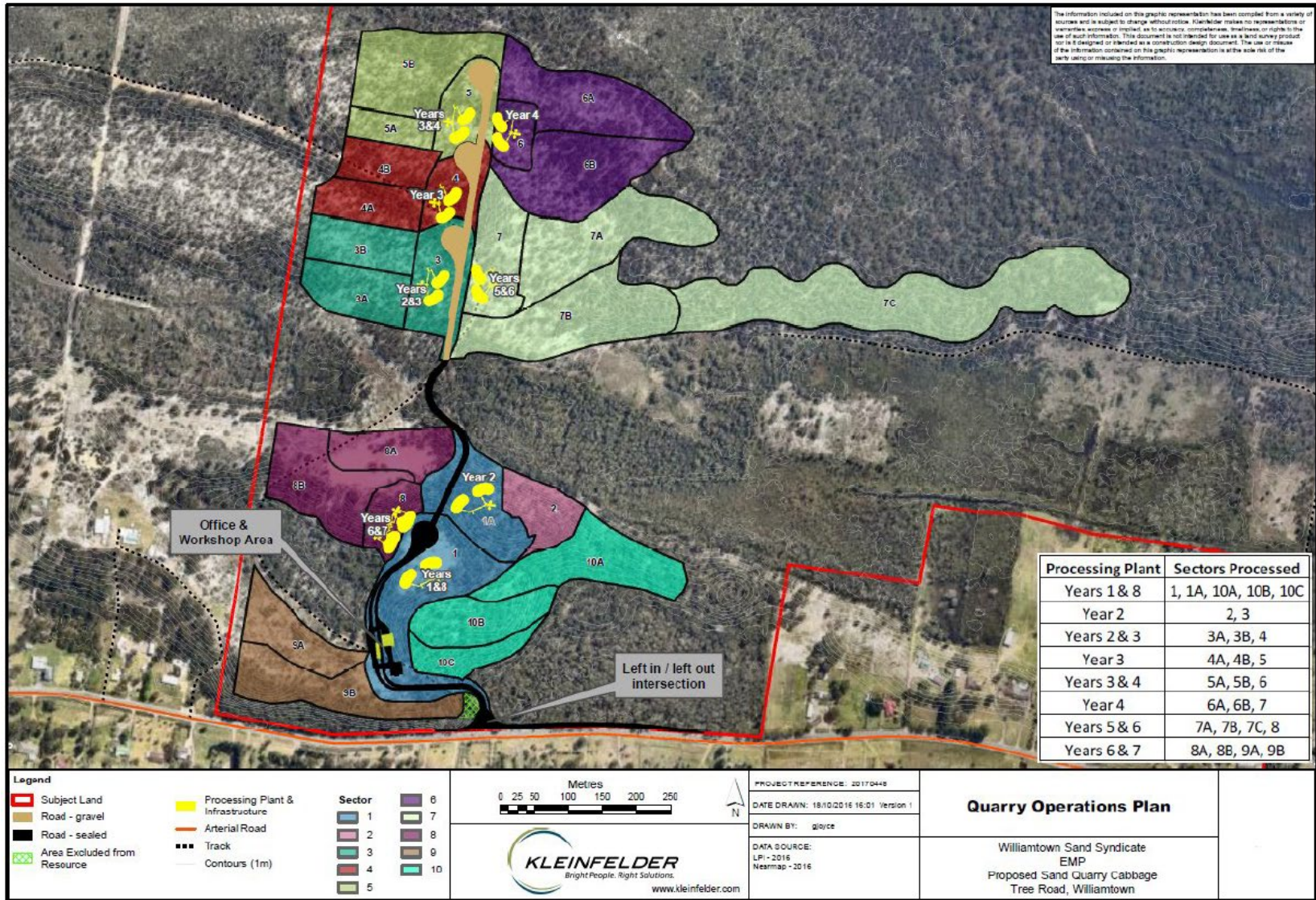
Regulatory Correspondence

- Modification 3 that was previously lodged in December 2022 is being finalised for re-lodgement based on correspondence received from DPE, currently completing consultation with agencies. Seeking resolution from BCD on correcting offsets due to change in legislation.

Key Activities Completed During this Period

- ▶ Further clearing in Sector 6A and 6B in March.
- ▶ Continued progressive extraction of sand from Sector 6, 6A and 6B.
- ▶ Rehabilitation in Sector 4A, 4B, 5, 5A and 5B.

Key activities completed during this period




Key Activities Completed During this Period

- ▶ Selling white, amber / washed (concrete), landscape and fill sand from the quarry.
- ▶ Haulage since March 2023 (also see later slides):
 - ▶ Averaged approximately 36.4% of monthly haulage allowance (Down from 38% last period, and 52% before that, holiday reductions).
 - ▶ Busiest day occurred in April 2023 at 64% of daily haulage allowance.
 - ▶ Busiest month was March 2023 at 42.9% of monthly haulage allowance.
- ▶ Weighbridge system is working well in helping regulating maximum haulage rates - system will not give driver a ticket unless under haulage rate.

Monitoring - Trucks

March 2023



NEWCASTLE SAND

March 2023

Monthly Summary of Traffic Movements

(as per Condition 26 of Consent SSD_6125)

| Date | Total | Approved Maximum* | Percentage of Approved Movements |
|-----------------------------|-------|-------------------|----------------------------------|
| 1-Mar | 50 | 116 | 43.1% |
| 2-Mar | 52 | 116 | 44.8% |
| 3-Mar | 64 | 116 | 55.2% |
| 4-Mar | 7 | 90 | 7.8% |
| 6-Mar | 43 | 116 | 37.1% |
| 7-Mar | 54 | 116 | 46.6% |
| 8-Mar | 51 | 116 | 44.0% |
| 9-Mar | 51 | 116 | 44.0% |
| 10-Mar | 50 | 116 | 43.1% |
| 11-Mar | 12 | 90 | 13.3% |
| 13-Mar | 43 | 116 | 37.1% |
| 14-Mar | 36 | 116 | 31.0% |
| 15-Mar | 42 | 116 | 36.2% |
| 16-Mar | 43 | 116 | 37.1% |
| 17-Mar | 41 | 116 | 35.3% |
| 18-Mar | 13 | 90 | 14.4% |
| 20-Mar | 43 | 116 | 37.1% |
| 21-Mar | 48 | 116 | 41.4% |
| 22-Mar | 42 | 116 | 36.2% |
| 23-Mar | 52 | 116 | 44.8% |
| 24-Mar | 57 | 116 | 49.1% |
| 25-Mar | 6 | 90 | 6.7% |
| 27-Mar | 37 | 116 | 31.9% |
| 28-Mar | 41 | 116 | 35.3% |
| 29-Mar | 35 | 116 | 30.2% |
| 30-Mar | 68 | 116 | 58.6% |
| 31-Mar | 70 | 116 | 60.3% |
| Total trucks this month | 1151 | | |
| Approved maximum for month* | | 2680 | 42.9% |

* Maximum approved haulage as per Condition 23 of Consent SSD_6125:

- 6 trucks per hour from 6am to 7am Monday to Friday.

- 10 trucks per hour from 7am to 6pm Monday to Friday.


- 10 trucks per hour from 7am to 4pm on Saturday.

- No haulage on Public Holidays.

The weighbridge and ticketing system is routinely calibrated and managed by an accredited external business to ensure the sale and transport of sand from the quarry is consistent with approved haulage limits and operational times.

Monitoring - Trucks

April 2023



NEWCASTLE SAND

April 2023

Monthly Summary of Traffic Movements

(as per Condition 26 of Consent SSD_6125)

| Date | Total | Approved Maximum* | Percentage of Approved Movements |
|-----------------------------|-------|-------------------|----------------------------------|
| 1-Apr | 9 | 90 | 10.0% |
| 3-Apr | 52 | 116 | 44.8% |
| 4-Apr | 33 | 116 | 28.4% |
| 5-Apr | 39 | 116 | 33.6% |
| 6-Apr | 42 | 116 | 36.2% |
| 8-Apr | 2 | 90 | 2.2% |
| 11-Apr | 45 | 116 | 38.8% |
| 12-Apr | 48 | 116 | 41.4% |
| 13-Apr | 42 | 116 | 36.2% |
| 14-Apr | 47 | 116 | 40.5% |
| 15-Apr | 9 | 90 | 10.0% |
| 17-Apr | 56 | 116 | 48.3% |
| 18-Apr | 51 | 116 | 44.0% |
| 19-Apr | 75 | 116 | 64.7% |
| 20-Apr | 54 | 116 | 46.6% |
| 21-Apr | 29 | 116 | 25.0% |
| 22-Apr | 1 | 90 | 1.1% |
| 24-Apr | 35 | 116 | 30.2% |
| 26-Apr | 48 | 116 | 41.4% |
| 27-Apr | 50 | 116 | 43.1% |
| 28-Apr | 53 | 116 | 45.7% |
| 29-Apr | 7 | 90 | 7.8% |
| | | | |
| | | | |
| Total trucks this month | 827 | | |
| Approved maximum for month* | | 2770 | 29.9% |

* Maximum approved haulage as per Condition 23 of Consent SSD_6125:

- 6 trucks per hour from 6am to 7am Monday to Friday.

- 10 trucks per hour from 7am to 6pm Monday to Friday.

- 10 trucks per hour from 7am to 4pm on Saturday.

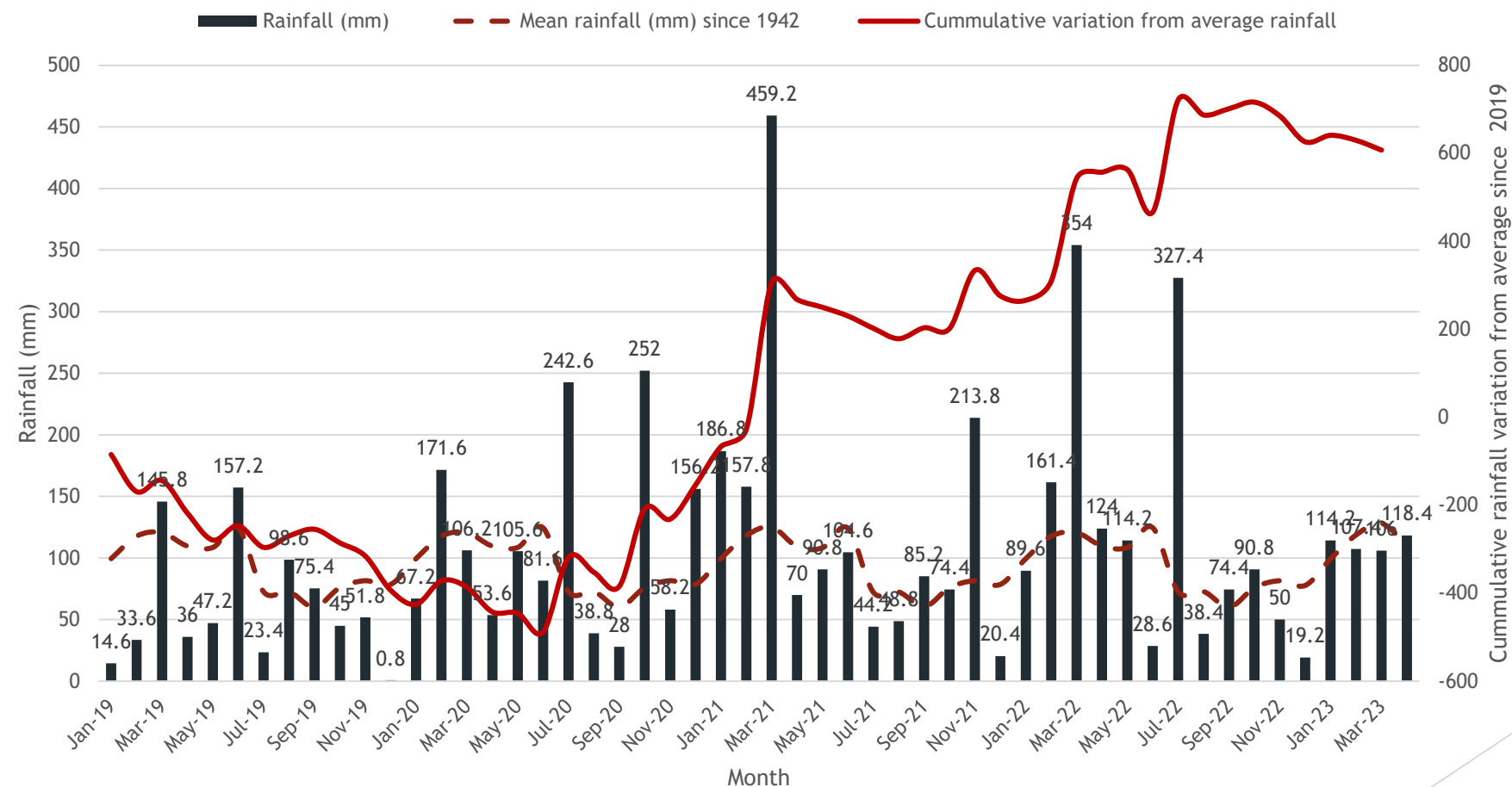
- No haulage on Public Holidays.

The weighbridge and ticketing system is routinely calibrated and managed by an accredited external business to ensure the sale and transport of sand from the quarry is consistent with approved haulage limits and operational times.

Environmental Monitoring - Rainfall

- ▶ Annual average rainfall at Williamtown is 1127mm.
- ▶ 2019 rainfall had a total of 729mm.
- ▶ 2020 rainfall (recovered second half of year) above average with 1362mm.
- ▶ 2021 rainfall above average with 1556mm.
- ▶ 2022 rainfall above average with 1472 mm.
- ▶ 2023 rainfall currently below average with 446 mm.
- ▶ Cumulatively over the last 3 months, we have had 25mm below average (February 2023 below average, March 2023 below average, April 2023 above average).

Environmental Monitoring - Water



Environmental Monitoring - Flora / Fauna

- ▶ Continue to collect regular monitoring with cameras across the site.
- ▶ Inspection of nest boxes installed throughout offset areas.
- ▶ Horse riders and quad bikes identified onsite.
- ▶ Targeted weed spraying throughout offset areas on site in May.

Environmental Monitoring - Water

- ▶ Continuous logging of groundwater depth data at several wells across site.
- ▶ Groundwater and surface water sampled on monthly basis, results available on the website <https://www.newcastlesand.com.au/monitoring-results/>.
- ▶ Water levels have dropped below TARP levels.
- ▶ Revised MED Report under review following DPE-Water comments.
- ▶ Low levels of PFAS are sporadically found in wash plant water and fines, levels are not consistent and below criteria, only marginally above the limit of reporting (around 0.3 ppb in washplant fines).

Environmental Monitoring - Noise

- ▶ Quarterly monitoring - last one in March, next one in June.
- ▶ Completed by Spectrum Acoustics - attended monitoring
- ▶ 30 minute (morning-shoulder) and 1.5 hour (day) compliance measurement periods for three consecutive days
- ▶ December monitoring undertaken during Christmas shutdown. Results indistinguishable to September 22 and March 23 monitoring results, this shows the quarry is inaudible.

| Table 5 NS Operational Noise Monitoring Results – 30 December 2022 (Morning-Shoulder) | | | | | | |
|--|--------|---------------|------------------------|----------------------------------|---|--|
| Location | Time | dB(A), Leq | Criterion dB(A) Leq | dB(A), L1 (1min) ¹ | Criterion dB(A), L1 (1min) ¹ | Identified Noise Sources, LAeq |
| R42 | 6:30am | 66 | 39 | <20 | 45 | Traffic (66), birds (31), NS (IA) |

1. L1 (1 min) from NS mine noise only.

| Table 6 NS Operational Noise Monitoring Results – 30 December 2022 (Day) | | | | |
|---|--------|---------------|------------------------|--|
| Location | Time | dB(A), Leq | Criterion dB(A) Leq | Identified Noise Sources, LAeq |
| R42 | 7:00am | 66 | 43 | Traffic (66), birds (33), NS (IA) |

| Table 5 NS Operational Noise Monitoring Results – 23 March 2023 (Morning-Shoulder) | | | | | | |
|---|--------|---------------|------------------------|----------------------------------|---|--|
| Location | Time | dB(A), Leq | Criterion dB(A) Leq | dB(A), L1 (1min) ¹ | Criterion dB(A), L1 (1min) ¹ | Identified Noise Sources, LAeq |
| R42 | 6:30am | 67 | 39 | <20 | 45 | Traffic (67), birds (35), NS (IA) |

1. L1 (1 min) from NS mine noise only.

| Table 6 NS Operational Noise Monitoring Results – 23 March 2023 (Day) | | | | |
|--|--------|---------------|------------------------|--|
| Location | Time | dB(A), Leq | Criterion dB(A) Leq | Identified Noise Sources, LAeq |
| R42 | 7:00am | 68 | 43 | Traffic (68), birds (38), NS (IA) |

Environmental Monitoring - Air

- ▶ Network includes two Beta Attenuation Monitors (BAMs) that measure real-time particulate matter smaller than 10 micron (PM10).
 - ▶ These record average value every 15 minutes continuously.
- ▶ Two High Volume Air Sampler (HVAS) one measuring PM10 and one measuring total suspended particulates (TSP).
 - ▶ These run for 24 hours every six days.
- ▶ Quarry must implement all reasonable and feasible avoidance and mitigation measures so particulate emissions from quarry do not cause exceedance of:
 - ▶ PM10 annual average $25 \mu\text{g}/\text{m}^3$ cumulative.
 - ▶ Quarry PM10 contribution over 24 hour average $50 \mu\text{g}/\text{m}^3$.

Environmental Monitoring - Air

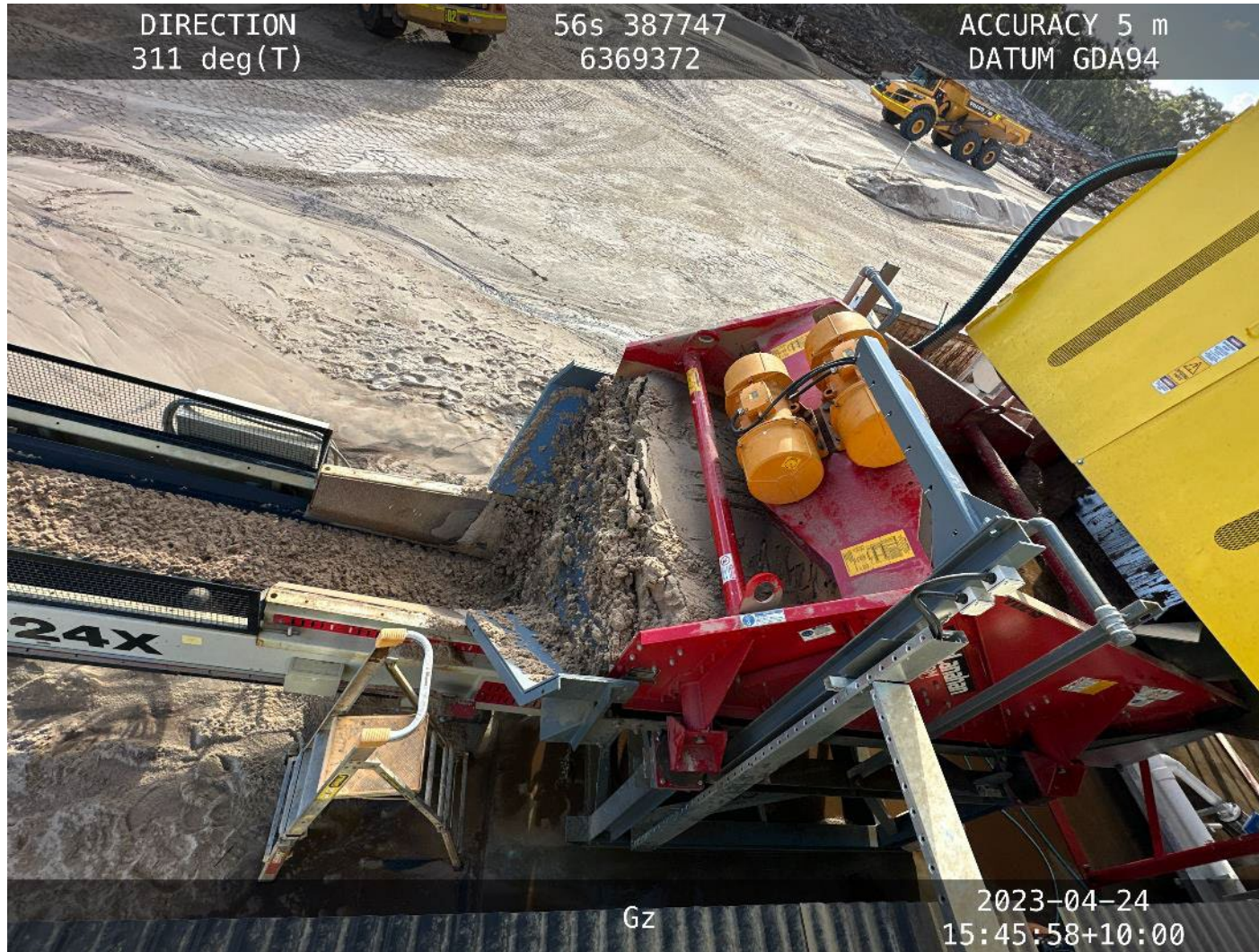
- ▶ Air quality has improved or remained similar to those at previous meeting:
 - ▶ Annual average PM10 levels measured with HVAS at 350 Cabbage Tree Road to end April 2023 is 10.8 $\mu\text{g}/\text{m}^3$ (was 9.7 in February 2023) against 25 $\mu\text{g}/\text{m}^3$ criteria.
 - ▶ Annual average PM10 measured with BAM at 393 Cabbage Tree Road to end of April 2023 is 10.9 $\mu\text{g}/\text{m}^3$ (was 10.4 in February 2023) against 25 $\mu\text{g}/\text{m}^3$ criteria.
 - ▶ Annual average PM10 measured with BAM at 442 Cabbage Tree Road to end of April 2023 is 7.6 $\mu\text{g}/\text{m}^3$ (was 7.3 $\mu\text{g}/\text{m}^3$ in February 2023) against 25 $\mu\text{g}/\text{m}^3$ criteria.
 - ▶ Annual average TSP levels measured with HVAS at 393 Cabbage Tree Road to end April 2023 is 28.0 $\mu\text{g}/\text{m}^3$ (was 26.7 $\mu\text{g}/\text{m}^3$ in February 2023) against 90 $\mu\text{g}/\text{m}^3$ criteria.
- ▶ Air quality model in assessment used an assumed annual average background of 16.6 $\mu\text{g}/\text{m}^3$.
- ▶ Data summarised online at: <https://www.newcastlesand.com.au/air-quality/>

The site from Mar to Jun 2023



May 2023 - Looking west over the wash plant in Sector 3

The site from Mar to Jun 2023



May 2023 - Dewatering screen dropping product sand onto conveyor

The site from Mar to Jun 2023



May 2023 - Looking across Sector 6A following clearing, prior to extraction

The site from Mar to Jun 2023



May 2023 - Looking across Sector 6A extraction area

The site from Mar to Jun 2023



April 2023 - Looking across topsoil in Sector 6A and the variable sand resources left after dredging

The site from Mar to Jun 2023



Looking west over rehab in Sector 3A / 3B wash plant to right of shot.

The site from Mar to Jun 2023



Looking east over rehab in Sector4A / 4B wash plant in background.

The site from Mar to Jun 2023



Looking west to gate leading offsite.

The site from Mar to Jun 2023



Placement of timber in northern portion of Sector 5B, facing north.

Questions?

More Information

- ▶ www.newcastlesand.com.au
- ▶ Quarry Manager - 0402 648 079
- ▶ info@newcastlesand.com.au