

Williamtown Sand Syndicate (WSS) Cabbage Tree Road Sand Quarry Community Consultative Committee Meeting

19 December 2023
9:00-9:27am
Mercure Newcastle Airport

Meeting Number: 14th Meeting **Type of meeting:** General
Chairperson: John Turner - JT **Note taker:** Jonathan Berry
Attendees: Wayne Sampson (Resident) – WS
Greg Callaghan (Resident) – GC
Stephen Kuehn (Resident) – SK
Elliott Laver (Newcastle Sand) - EL
Jonathan Berry (Wedgetail Project Consulting) – JB
Darren Williams (WSS) – DW
Apologies: Paul Hardes (Resident) – PH
Observers: None
Meeting Open: 9:00am

Minutes

Agenda item: 1 Apologies Received **Presenter:** John Turner

Discussion:

Paul Hardes (Resident) – PH

Agenda item: 2 Declaration of Pecuniary Interest **Presenter:** NA

Discussion:

John Turner (Chairperson) – Paid for service by WSS.
Wayne Sampson (Resident) – Deed with WSS.
Jonathan Berry (Wedgetail Project Consulting) – Consultant employed by WSS.
Greg Callaghan (Resident) – Deed with WSS
Stephen Kuehn (Resident) – Deed with WSS
Elliott Laver - Employed as Quarry Manager by Newcastle Sand
Darren Williams (WSS) – Shareholder / Director of Newcastle Sand

Agenda item: 3 Minutes to be adopted **Presenter:** John Turner

Discussion:

Minutes from the last meeting were noted.
Minutes moved by SK. Minutes seconded by GC. All Agree.

Agenda item: 4 Business Arising from Previous Minutes

Presenter: JT

- Response to issues raised or provision of additional information requested;

- Nil

Agenda item: 5 Correspondence

Presenter: John Turner

- See presentation.

Agenda item: 6 Proponents reports & overview of activities, including; Presenter: Jonathan Berry

- Progress of the project
- Monitoring & environmental performances
- Community complaints & responses to these complaints
- Information provided to the community and any feedback

JB – Gave presentation of slides (attached), discussion on slides below.

Discussion on complaints slide (slide 4):

SK – the issue is sometimes with other trucks using compression braking going to other quarries or jobs.

EL – Detail for each complaint is very important, otherwise it can be hard to manage.

Discussion on Community Open Day and Newsletters commitment (slide 6):

JB – Noted request during in preparing the response to submissions for Mod 3 that feedback from the CCC was needed to advise on if it was reasonable to remove the commitment for the open day.

EL – Offer is open to any CCC members or neighbours to contact quarry to arrange a visit.

All – Agreed, remove commitment.

GC – How is rehabilitation progressing?

JB – The rehabilitation continually improving, finding that the rehab can take a little longer for some of the eucalypts / angophora to come in, but we are seeing this happen now.

Action items	Person responsible	Deadline
✓ Nil		
✓		
✓		

Agenda item: 7 Other Agenda Items

Presenter: John Turner

Discussion:

Nil

Agenda item: 8 General Business

Presenter: John Turner

Discussion:

JT – No comments were received on the Terms of Reference (TOR), recommend we formally adopt. All Agreed.

WS – How long has this committee been operating.

JT – October 2019 was first meeting.

Action items	Person responsible	Deadline
✓ Nil		
✓		
✓		

Agenda item: 9 Next Meeting

Presenter: John Turner

Discussion:

JT – The meeting is now closed at 9:27am, the next meeting to be advised.

Action items	Person responsible	Deadline
None.		

Other Information

- Minutes to be provided as draft in the next week.
- Committee members have one week to provide feedback on the minutes to the Chairperson.
- Within two weeks of receiving feedback the minutes will be finalized and distributed to members and placed on the website.

Meeting Close:

9:27 am

The background is a light green gradient with various Christmas ornaments in gold, silver, red, and green. A stylized mountain logo with a green peak and a yellow base is positioned behind the text. The text is centered and reads:

NEWCASTLE SAND

Community Consultative Committee Update
Project update for the period **October to December 2023**

For Meeting on 19 December 2023

Meeting Agenda for the Cabbage Tree Road Sand Quarry Community Consultative Committee.

Friday 19 December 2023 at 9.00am

Agenda Items:

- ▶ 1) Apologies
- ▶ 2) Declaration of pecuniary or other interests
- ▶ 3) Minutes to be adopted
- ▶ 4) Business arising from previous minutes - responses to issues or provision of additional information requested
- ▶ 5) Correspondence
- ▶ 6) Proponents reports and overview of activities including:
 - ▶ - progress of the project
 - ▶ - monitoring and environmental performances
 - ▶ - community complaints and responses to these complaints
 - ▶ - information provided to the community and any feedback
- ▶ 7) Other agenda items;
 - ▶ -Confirmation of the Terms of Reference for the committee
- ▶ 8) General business
- ▶ 9) Next meeting

Correspondence

- ▶ DPE Compliance - 21 November 2023. Complaint received by DPE on 15 November that two complaints made to Newcastle Sand on 6 November made to them by R41 regarding the use of compression brakes on 1 November were not responded to.
 - ▶ Have now instigated new email environment@newcastlesand.com.au, with an automated response and a 5 day follow-up time frame. Aimed to avoid emails getting caught up with other emails received to info@newcastlesand.com.au
 - ▶ DPE have issued warning letter (12/12/2023) for not complying with TMP requirements to respond.
 - ▶ Management plans require an update of the complaint process to match revised process by 31 March 2024.
- ▶ DPE Compliance - 1 November 2023. Notice to furnish information in relation to matters that had yet to be finalised within the system including, updates to the BRMP, Maximum Extraction Report (Groundwater), Survey Plan for northern resource area, and the 2022 AER. These matters, with exception to groundwater report are completed. Failure due to consultant workloads and exacerbated by extended review process, (i.e. 6 months between lodgement and review).
Undertaking a review of resourcing to reduce lag time in response.

Community Complaints since October 2023

- ▶ Community complaints register available at:
<https://www.newcastlesand.com.au/complaints-register/>
- ▶ 4 complaints received this period.
 - ▶ Truck departing with uncovered load - dusty
 - ▶ Trucks arriving before 6:30am used air/ compression brakes.
 - ▶ DPE complaint on the complaints process.
 - ▶ Truck using too much speed and needing to use compression brakes at 6:30am.

Regulatory Correspondence

- ▶ DPE Compliance - 21 November 2023. Complaint received by DPE on 15 November that two complaints made to Newcastle Sand on 6 November made to them by R41 regarding the use of compression brakes on 1 November were not responded to.
 - ▶ Have now instigated new email environment@newcastlesand.com.au, with an automated response and a 5 day follow-up time frame. Aimed to avoid emails getting caught up with other emails received to info@newcastlesand.com.au
 - ▶ DPE have issued warning letter (12/12/2023) for not complying with TMP requirements to respond.
 - ▶ Management plans require an update of the complaint process to match revised process by 31 March 2024.
- ▶ DPE Compliance - 1 November 2023. Notice to furnish information in relation to matters that had yet to be finalised within the system including, updates to the BRMP, Maximum Extraction Report (Groundwater), Survey Plan for northern resource area, and the 2022 AER. These matters, with exception to groundwater report are completed. Failure due to consultant workloads and exacerbated by extended review process, (i.e. 6 months between lodgement and review).
Undertaking a review of resourcing to reduce lag time in response.

Regulatory Correspondence

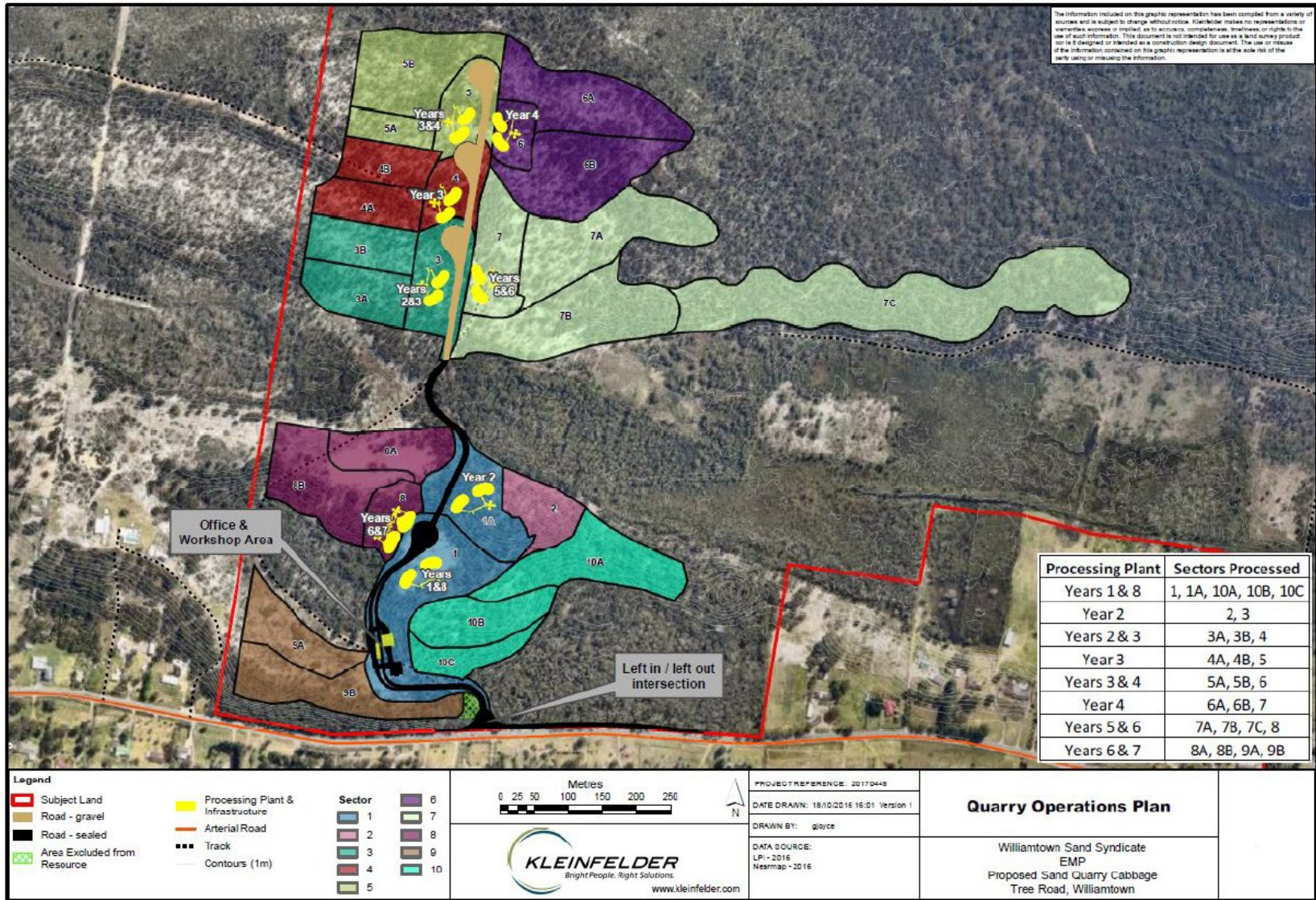
- ▶ Modification 3 - agencies have requested additional information, currently developing the responses to these matters to enable re-lodgement.
- ▶ One matter that was raised relates to a proposed change to the Statement of Commitments. As you may recall the Modification included a range of proposed changes to the commitments to ensure these are more inline with the practical limitations and can be adjusted within the management plans.
 - ▶ We have proposed to remove the commitment to provide Newsletters and an Annual Open Day, we see this being justified for the following reasons:
 - ▶ We see that the CCC meeting presentation is detailed and is available to everyone to read.
 - ▶ We have open dialogue with many of the neighbours.
 - ▶ The Open Day has been difficult to arrange in the past with Covid, and we are not sure there is value in this commitment. We welcome anyone that is interested in looking at the site to get in touch with the Quarry Manager.
 - ▶ Is this supported by the CCC?

Key Activities Completed During this Period

- ▶ Continued progressive extraction of sand from Sector 6B and 7.
- ▶ Rehabilitation in Sector 6A / 6B.




Key activities completed during this period



Key Activities Completed During this Period

- ▶ Selling white, amber / washed (concrete), landscape and fill sand from the quarry. Glass sand not currently being sold.
- ▶ Haulage since October 2023 (also see later slides):
 - ▶ Averaged approximately 49% of monthly haulage allowance (up from 40% last period).
 - ▶ Busiest day occurred in October 2023 at 74% of daily haulage allowance.
 - ▶ Busiest month was November 2023 at 49% of monthly haulage allowance.
- ▶ Weighbridge system is working well in helping regulating maximum haulage rates - system will not give driver a ticket unless under haulage rate.

Monitoring - Trucks October 2023



NEWCASTLE SAND

October 2023

Monthly Summary of Traffic Movements

(as per Condition 26 of Consent SSD_6125)

Date	Total	Approved Maximum*	Percentage of Approved Movements
3-Oct	61	116	52.6%
4-Oct	61	116	52.6%
5-Oct	65	116	56.0%
6-Oct	53	116	45.7%
7-Oct	12	90	13.3%
9-Oct	53	116	45.7%
10-Oct	71	116	61.2%
11-Oct	55	116	47.4%
12-Oct	66	116	56.9%
13-Oct	71	116	61.2%
14-Oct	5	90	5.6%
16-Oct	64	116	55.2%
17-Oct	59	116	50.9%
18-Oct	79	116	68.1%
19-Oct	73	116	62.9%
20-Oct	86	116	74.1%
21-Oct	19	90	21.1%
23-Oct	66	116	56.9%
24-Oct	70	116	60.3%
25-Oct	77	116	66.4%
26-Oct	60	116	51.7%
27-Oct	46	116	39.7%
28-Oct	4	90	4.4%
30-Oct	58	116	50.0%
31-Oct	83	116	71.6%
Total trucks this month	1417		
Approved maximum for month*		2912	48.7%

* Maximum approved haulage as per Condition 23 of Consent SSD_6125:

- 6 trucks per hour from 6am to 7am Monday to Friday.


- 10 trucks per hour from 7am to 6pm Monday to Friday.

- 10 trucks per hour from 7am to 4pm on Saturday.

- No haulage on Public Holidays.

The weighbridge and ticketing system is routinely calibrated and managed by an accredited external business to ensure the sale and transport of sand from the quarry is consistent with approved haulage limits and operational times.

Monitoring - Trucks November 2023



NEWCASTLE SAND

November 2023

Monthly Summary of Traffic Movements			
(as per Condition 26 of Consent SSD_6125)			
Date	Total	Approved Maximum*	Percentage of Approved Movements
1-Nov	58	116	50.0%
2-Nov	66	116	56.9%
3-Nov	71	116	61.2%
4-Nov	10	90	11.1%
6-Nov	67	116	57.8%
7-Nov	65	116	56.0%
8-Nov	66	116	56.9%
9-Nov	66	116	56.9%
10-Nov	68	116	58.6%
11-Nov	5	90	5.6%
13-Nov	59	116	50.9%
14-Nov	67	116	57.8%
15-Nov	75	116	64.7%
16-Nov	69	116	59.5%
17-Nov	70	116	60.3%
18-Nov	3	90	3.3%
20-Nov	65	116	56.0%
21-Nov	67	116	57.8%
22-Nov	53	116	45.7%
23-Nov	74	116	63.8%
24-Nov	64	116	55.2%
25-Nov	14	90	15.6%
27-Nov	60	116	51.7%
28-Nov	49	116	42.2%
29-Nov	35	116	30.2%
30-Nov	61		
Total trucks this month	1427		
Approved maximum for month*		2912	49.0%

* Maximum approved haulage as per Condition 23 of Consent SSD_6125:

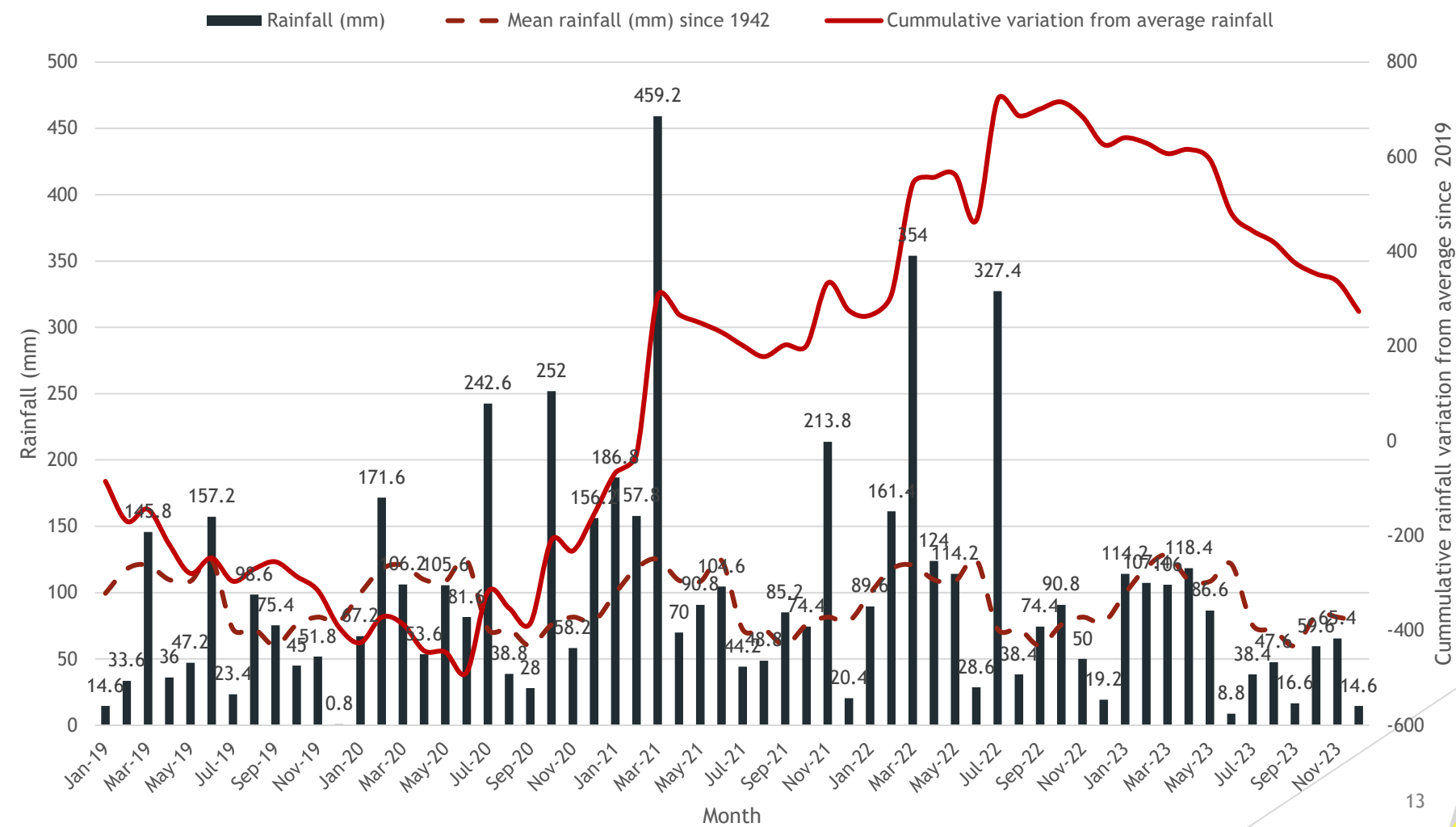
- 6 trucks per hour from 6am to 7am Monday to Friday.
- 10 trucks per hour from 7am to 6pm Monday to Friday.
- 10 trucks per hour from 7am to 4pm on Saturday.
- No haulage on Public Holidays.

The weighbridge and ticketing system is routinely calibrated and managed by an accredited external business to ensure the sale and transport of sand from the quarry is consistent with approved haulage limits and operational times.

Environmental Monitoring - Rainfall

- ▶ Annual average rainfall at Williamtown is 1127mm.
- ▶ 2019 rainfall had a total of 729mm.
- ▶ 2020 rainfall (recovered second half of year) above average with 1362mm.
- ▶ 2021 rainfall above average with 1556mm.
- ▶ 2022 rainfall above average with 1472 mm.
- ▶ 2023 rainfall currently below average with 769 mm (about 336mm below average for this time of year).
- ▶ Cumulatively since January 2019 we are still above the average rainfall by about 273mm, however, in that period we had three significant months that totalled 1140mm (or over 1 years rainfall, in just 3 months). In the same period, we have had more below average rainfall months than above average.

Environmental Monitoring - Water



Environmental Monitoring - Flora / Fauna

- ▶ Continue to collect regular monitoring with cameras across the site.
- ▶ Seasonal frog monitoring to occur during favourable conditions - limited suitable times at this stage (50mm in 24 hours).
- ▶ Planting of tubestock completed, mixed outcomes due to weather.
- ▶ Seeding planned for Autumn 2024.

Environmental Monitoring - Water

- ▶ Continuous logging of groundwater depth data at several wells across site.
- ▶ Groundwater and surface water sampled on monthly basis, results available on the website <https://www.newcastlesand.com.au/monitoring-results/>.
- ▶ Water levels have dropped below TARP levels.
- ▶ Revised MED Report under review following DPE-Water comments should be finalised this week for re-submission.

Environmental Monitoring - Noise

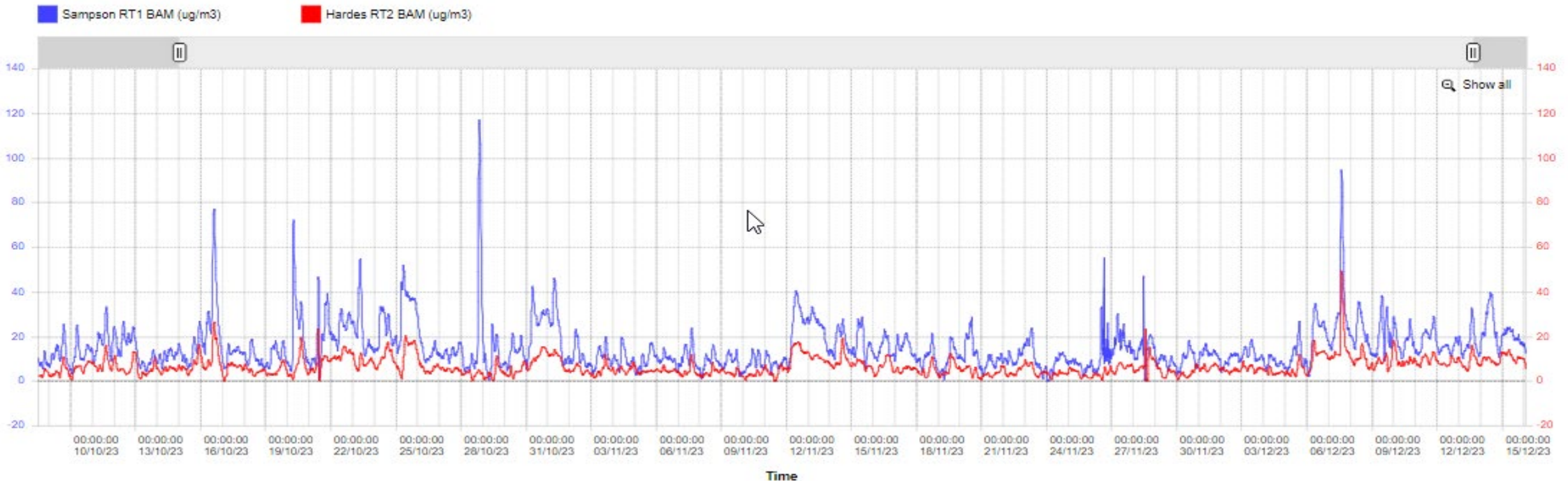
- ▶ Quarterly monitoring - December is last one for the year.
- ▶ Completed by Spectrum Acoustics - attended monitoring
- ▶ 30 minute (morning-shoulder) and 1.5 hour (day) compliance measurement periods for three consecutive days
- ▶ Quarry is inaudible.

Environmental Monitoring - Air

- ▶ Network includes two Beta Attenuation Monitors (BAMs) that measure real-time particulate matter smaller than 10 micron (PM10).
 - ▶ These record average value every 15 minutes continuously.
- ▶ Two High Volume Air Sampler (HVAS) one measuring PM10 and one measuring total suspended particulates (TSP).
 - ▶ These run for 24 hours every six days.
- ▶ Quarry must implement all reasonable and feasible avoidance and mitigation measures so particulate emissions from quarry do not cause exceedance of:
 - ▶ PM10 annual average $25 \mu\text{g}/\text{m}^3$ cumulative.
 - ▶ Quarry PM10 contribution over 24 hour average $50 \mu\text{g}/\text{m}^3$.

Environmental Monitoring - Air

- ▶ Air quality has improved or remained similar to those at previous meeting.
- ▶ Data summarised online at: <https://www.newcastlesand.com.au/air-quality/>
- ▶ Big spike on Saturday night 6pm to 1:30am.
- ▶ This is from our data logging system.



The site from November 2023



Looking west over wash plant from Sector 7 clearing area

The site from November 2023



Sector 7 following clearing

The site from November 2023



Looking east toward existing clearing and rehab in Sector 7

The site from November 2023



Looking northwest to extent of resource area, stockpiled white sand shown

The site from November 2023



Looking south west over Sector 7 - note new technique in timber collection aims to not “clean up” the timber as much

The site from November 2023



Looking south-west over Sector 4A/3B, this sector used the previous “clean” topsoil approach - heavy litter will take longer to rehabilitate

The site from November 2023



Loading up last of sand from Sector 6B

More Information

- ▶ www.newcastlesand.com.au
- ▶ Quarry Manager: Elliott - 0402 648 079
- ▶ environment@newcastlesand.com.au



Questions?

Thankyou for another year
of your contributions to
the Committee

Merry Christmas

Have a safe and
enjoyable break