

Williamtown Sand Syndicate (WSS) Cabbage Tree Road Sand Quarry Community Consultative Committee Meeting

24 June 2025
9:01am - 09:19am
Mercure Newcastle Airport

Meeting Number:	20th Meeting	Type of meeting:	General
Chairperson:	John Turner - JT	Note taker:	Kristen McMahon - KM
Attendees:	Greg Callaghan (Resident) – GC Stephen Kuehn (Resident) – SK Jonathan Berry (Wedgetail Project Consulting) – JB John Simpson (Hunter Water Representative) – JS Kristen McMahon (IEMA Consultant) - KM		
Apologies:	Paul Hardes (Resident) – PH Wayne Sampson (Resident) – WS Darren Williams (WSS) – DW Shirley Davis (Resident) – SD Elliott Laver (Newcastle Sand) - EL		
Observers:	Sophie Efkarpidis (Council Officer) -SE		
Meeting Open:	9:01am		

Minutes

Agenda item: 1	Apologies	Presenter:	John Turner
-----------------------	------------------	-------------------	-------------

Discussion:

Paul Hardes (Resident) – PH
Wayne Sampson (Resident) – WS
Darren Williams (WSS) – DW
Shirley Davis (Resident) – SD
Elliott Laver (Newcastle Sand) - EL

Agenda item: 2	Declaration of Pecuniary Interest	Presenter:	NA
-----------------------	--	-------------------	----

Discussion:

John Turner (Chairperson) – Paid for service by WSS.
Jonathan Berry (Wedgetail Project Consulting) – Consultant employed by WSS.
Kristen McMahon (IEMA) – Consultant employed by WSS.
Greg Callaghan (Resident) – Deed with WSS

Stephen Kuehn (Resident) – Deed with WSS
John Simpson (Hunter Water Representative) - Nil

Agenda item: 3 Minutes to be adopted **Presenter:** John Turner

Discussion:

Minutes from the last meeting were noted.
Minutes moved by SK. Minutes seconded by GC. All Agree.

Agenda item: 4 Business Arising from Previous Minutes **Presenter:** John Turner

- Response to issues raised or provision of additional information requested;
- Nil

Agenda item: 5 Correspondence **Presenter:** John Turner

- See presentation.

Agenda item: 6 Proponents reports & overview of activities, including; **Presenter:** Kristen McMahon

- Progress of the project
- Monitoring & environmental performances
- Community complaints & responses to these complaints
- Information provided to the community and any feedback

KM – Gave presentation of slides (attached), discussion on slides below.

JB – assisted and provided insight on previous rainfall complaint to the EPA

JS - arrived and outline the Tomaree Aquifer is at capacity with discharges occurring everywhere

JT – asked if there were any questions

ALL – no

KM – continued presentation

JB – more nest boxes out than required based on removed hollows, full amount of hollows counted prior to clearing – some false hollows recorded due to burnt stumps. All the nest boxes are monitored with a GoPro.

JS – Asked what % are being used and what kind of sized / configuration of boxes are there (10% or 100%)

JB – will take on note and provide an answer

SK – mentioned WS had been mowing his lawn

KM – continued and finished presentation

JT – any general business

All – no

Meeting close

Action items	Person responsible	Deadline
✓ JB / KM to provide JS the % of occupancy of the next boxes	KM	Before next meeting
✓		
✓		

Agenda item: 7 Other Agenda Items	Presenter: John Turner
--	-------------------------------

Discussion:

Nil

Agenda item: 8 General Business	Presenter: John Turner
--	-------------------------------

Discussion:

Nil

Action items	Person responsible	Deadline
✓		
✓		
✓		

Agenda item: 9 Next Meeting	Presenter: John Turner
------------------------------------	-------------------------------

Discussion:

JT – The meeting is now closed, the next meeting to be advised.

Action items	Person responsible	Deadline
None.		

Other Information

- Minutes to be provided as draft in the next week.
- Committee members have one week to provide feedback on the minutes to the Chairperson.
- Within two weeks of receiving feedback the minutes will be finalized and distributed to members and placed on the website.

Meeting Close:

9:20am



NEWCASTLE **SAND**

Community Consultative Committee Update

Project update for the period **March 2025 - June 2025**

For Meeting on 24 June 2025 9:00am

Meeting Agenda for the Cabbage Tree Road Sand Quarry Community Consultative Committee.

Tuesday 24 June 2025 9.00am

Agenda Items:

- ▶ 1) Apologies
- ▶ 2) Declaration of pecuniary or other interests
- ▶ 3) Minutes to be adopted
- ▶ 4) Business arising from previous minutes - responses to issues or provision of additional information requested
- ▶ 5) Correspondence
- ▶ 6) Proponents reports and overview of activities including:
 - ▶ - progress of the project
 - ▶ - monitoring and environmental performances
 - ▶ - community complaints and responses to these complaints
 - ▶ - information provided to the community and any feedback
- ▶ 7) Other agenda items
- ▶ 8) General business
- ▶ 9) Next meeting

Correspondence

► Nil

Community Complaints

- ▶ Community complaints register available at:
<https://www.newcastlesand.com.au/complaints-register/>
- ▶ Details also provided in the monthly report
<https://www.newcastlesand.com.au/monthly-report/>
- ▶ 1 complaints received this period.
 - ▶ Complaint reported to the EPA regarding flooding/running water on landowner property, the complainant assumed it was coming from site.
 - ▶ This has been now been closed out.

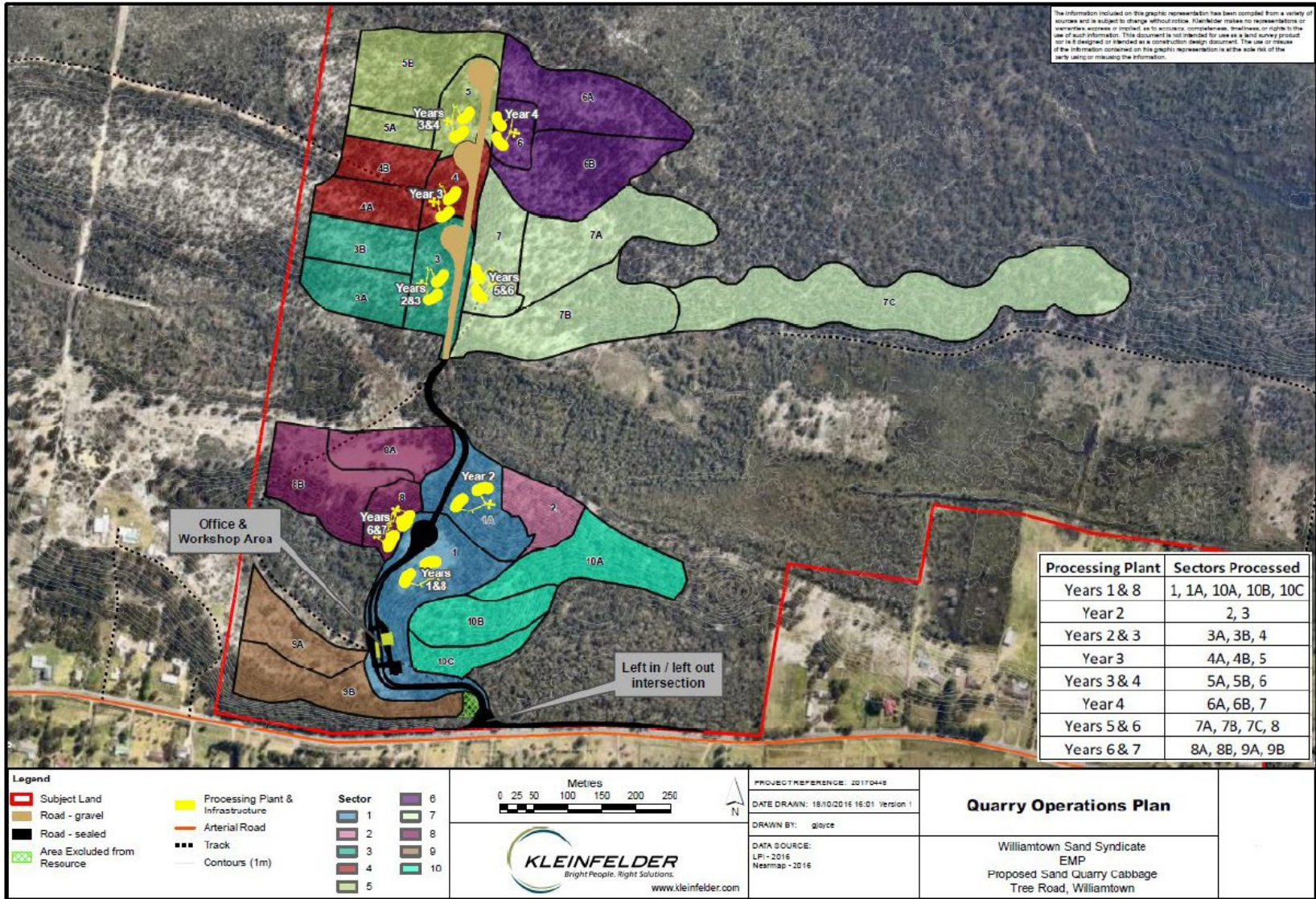
Regulatory Correspondence

- ▶ Modification 4: Landowners' consent required for the area of the project site owned by Port Stephens Council and lodgement will continue. Can track the progress through the publicly available Major Projects site:
<https://www.planningportal.nsw.gov.au/major-projects/projects/cabbage-tree-road-sand-quarry>
- ▶ Federal EPBC Audit (DCCEEW): Underway and preparing for submission
- ▶ Rehabilitation Bond Estimate Review: Completed
- ▶ Annual review 2024 accepted and on the website
- ▶ EPL Annual Return upcoming in the next period

Key Activities Completed During this Period

- ▶ Continued extraction in Sector 8B
- ▶ Progressive rehabilitation currently in Sector 8, 8A
- ▶ Progressive rehabilitation being completed in previous Sector 7A and 7B
- ▶ Product, haulage and sales continued
- ▶ Compliant in operating under the maximum truck movements per hour per day as per SSD-6125, monthly internal checks to ensure truck monitoring is completed

Key activities completed during this period



Environmental Monitoring - Flora / Fauna

- ▶ Continue to collect regular monitoring with cameras across the site.
- ▶ Seasonal frog monitoring to occur during favourable conditions.
- ▶ Targeted weed spraying throughout offset areas on site.
- ▶ Rehab monitoring conducted in March 2025.
- ▶ Nest box monitoring conducted in March 2025.

Environmental Monitoring - Flora / Fauna



Brushtail Possum



Pair of Squirrel Gliders

Nest Boxes occupied March 2025

Environmental Monitoring - Flora / Fauna

- ▶ Nest Box Monitoring completed for 2025
- ▶ 117 hollows removed across the site and a total of 183 nest boxes installed
- ▶ Camera monitoring completed
- ▶ The frog fence requires maintenance in some areas around the rehabilitation area; however, it should be considered that this fence will be removed when rehabilitation efforts have been completed



Environmental Monitoring - Rainfall

- ▶ Exceptionally wet May (502 mm)
- ▶ March-May period alone contributed 73% of the site's typical annual rainfall.
- ▶ If average rainfall continues, **May 2025** experienced extremely high rainfall (502 mm), which is over **four times the monthly average** (~112 mm), driven by intense rainfall events
- ▶ 2025 is on track to exceed the historical annual average of 1127 mm well before the year's end
- ▶ **May 20:** 103.6 mm
- ▶ **May 24:** 149.0 mm
- ▶ **May 25:** 98.0 mm
- ▶ This has impacted groundwater levels that are dipped monthly

Environmental Monitoring - Weather

Newcastle Sand Air Monitoring

Meteorological Data

Station ID: 061078

Name: WILLIAMTOWN RAAF

Lat: -32.7, Long: 151.84

Height: 7.5m

<http://www.bom.gov.au/climate/dwo/IDCJDW2145.latest.shtml>

Rainfall

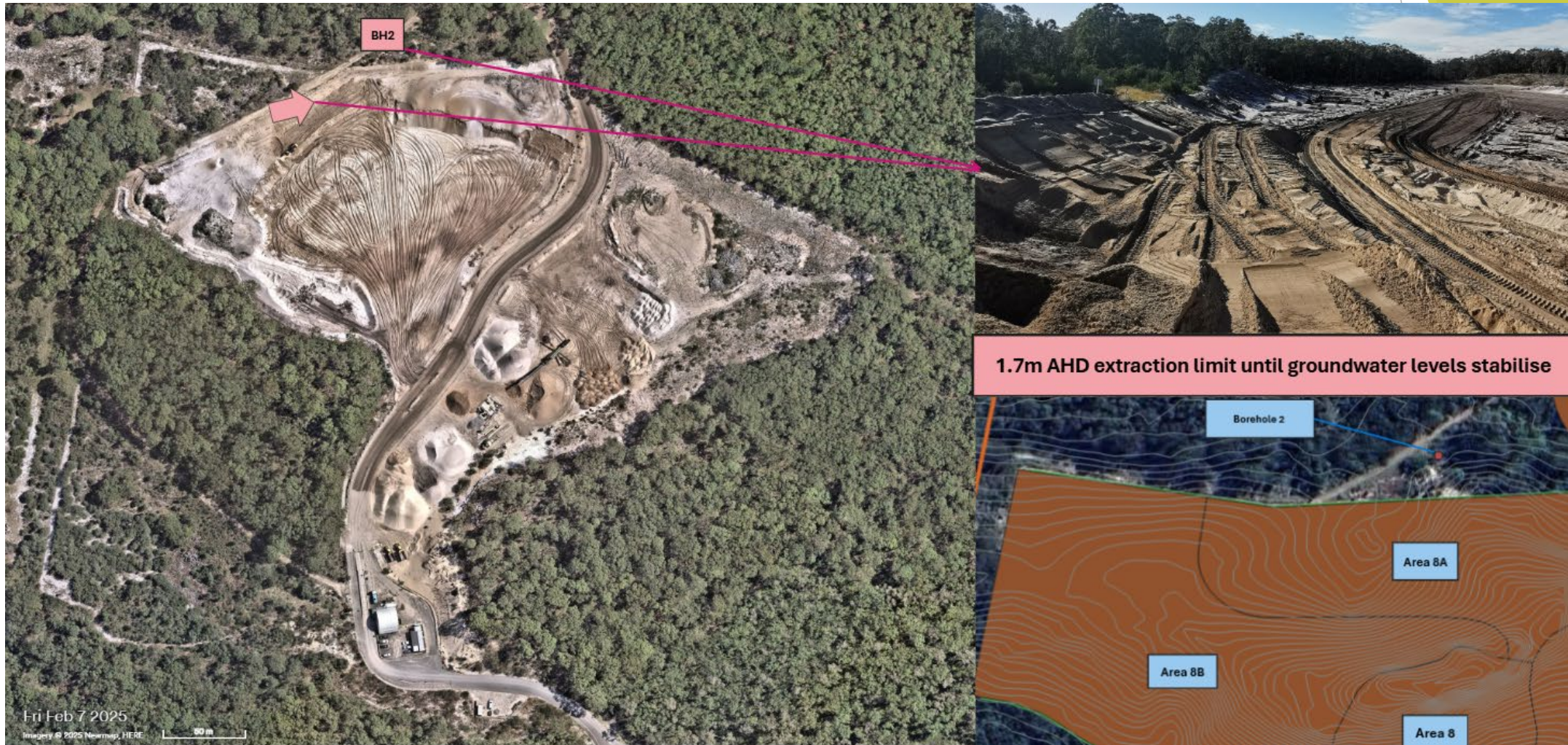
Wind

Date	Long Term Mean of Total Monthly Rainfall (mm)	Total Monthly Rainfall (mm)	Average Daily Rainfall (mm)	Variation From Total Mean Monthly Rainfall	Average of 9am relative humidity (%)	Average of Direction of maximum wind gust (°)	Average of 9am wind speed (km/h)
Jan-24	98.4	20.0	0.6	-78.4	67.6	141.53	17.26
Feb-24	118.7	118.2	4.4	-0.5	80.4	154.17	14.75
Mar-24	126.9	45.4	1.5	-81.5	85.1	134.25	10.50
Apr-24	110.7	195.4	6.5	84.7	80.4	170.25	14.70
May-24	110.8	309.4	10.0	198.6	88.6	207.58	14.37
Jun-24	122.1	167.4	5.6	45.3	78.2	271.55	20.00
Jul-24	75.4	96.0	3.1	20.6	73.9	251.13	23.10
Aug-24	71.5	56.8	1.8	-14.7	79.0	217.02	15.70
Sep-24	60.2	65.8	2.2	5.6	59.3	222.00	20.77
Oct-24	75.6	54.0	1.9	-21.6	70.5	176.12	16.43
Nov-24	82.7	73.8	2.8	-8.9	74.3	168.75	13.41
Dec-24	76.0	12.8	0.4	-63.2	69.7	137.18	13.77
Jan-25	100.3	247.2	8.2	146.9	76.4	141.75	14.03
Feb-25	117.6	33.2	1.2	-84.4	76.1	115.31	10.54
Mar-25	127.2	145.0	4.7	17.8	83.4	136.45	12.07
Apr-25	111.6	180.0	6.2	68.4	77.6	201.72	12.59
May-25	115.8	502.0	16.2	386.2	85.5	188.71	11.83

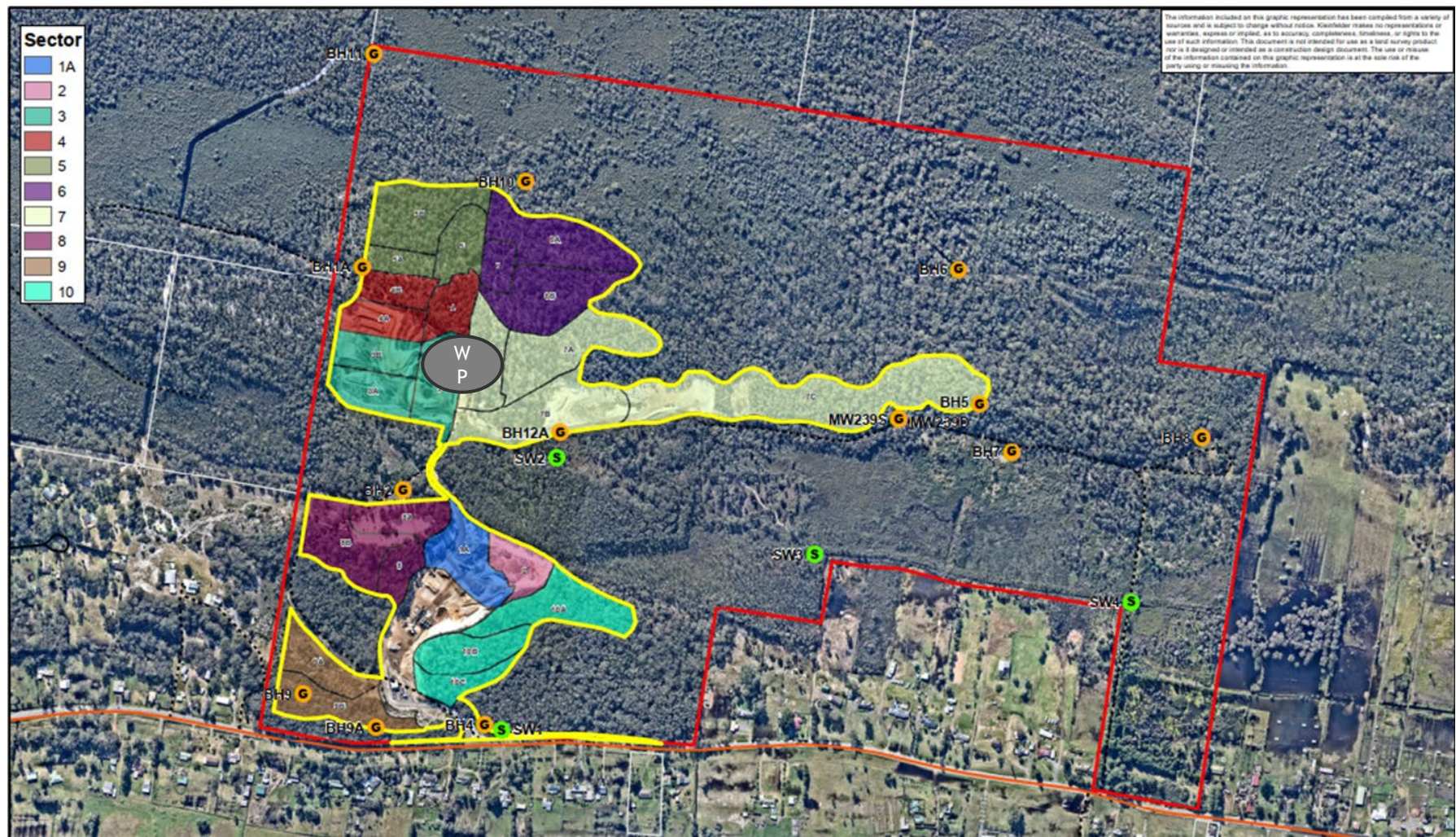
Environmental Monitoring - Groundwater

- ▶ Groundwater sampled on monthly basis.
- ▶ No exceedances in groundwater quality.
- ▶ **Groundwater Level Elevation** in the reporting period
 - ▶ Level 1, 2 and 3 similar to previous years in the March to May period.
 - ▶ Currently BH01A has significantly improved from Level 3 to Level 1.
 - ▶ BH9 and 9A require weekly dipping at Level 1.
 - ▶ BH11 dipping required when access is safe (this is an upgradient reference bore).
 - ▶ BH2 is on its way back to stabilising and the Department is aware that a 1.7mAHD buffer is enacted in Area 8 as an environmental mitigation measure until levels return.

Environmental Monitoring - BH2 - SRA



Environmental Monitoring - Monitoring Locations



Environmental Monitoring - PFAS

- ▶ PFAS, PFOA and Total Positive PFAS results for surface water sites SW1-4 and the Wash Plant Water are <0.01ug/L
- ▶ For comparison, the health guideline limits are 0.56 µg/L for PFOA and 0.07 µg/L for the combined PFHxS and PFOS
- ▶ Wash plant fines (soil) tested quarterly - May results within acceptable limits

Sources:

- ▶ Australian and New Zealand Guidelines for Fresh and Marine Water Quality (ANZG, 2018)
- ▶ Australian Government Department of Health - Health Based Guidance Values (HBGVs) for PFAS
- ▶ DCCEEW HEPA PFAS National Environmental Management Plan 2.0

Environmental Monitoring -Water

- ▶ Wash Plant Fines (soil) tested quarterly
 - ▶ No exceedences
- ▶ Wash Plant Water tested monthly (March / April / May)
 - ▶ No exceedences
- ▶ Surface Water sites 1-4 tested monthly

Environmental Monitoring - Noise

- ▶ Quarterly monitoring completed in March 2025.
- ▶ Completed by Spectrum Acoustics
- ▶ Attended monitoring
- ▶ 30-minute (morning-shoulder) and 1.5 hour (day) compliance measurement periods for three consecutive days
- ▶ Quarry was determined inaudible and compliant with the criteria and conditions of SSD-6125 and EPL 24264.

Environmental Monitoring - Air

- ▶ Network includes two Beta Attenuation Monitors (BAMs) that measure real-time particulate matter smaller than 10 micron (PM10).
 - ▶ These record average value every 15 minutes continuously.
- ▶ Two High Volume Air Sampler (HVAS) one measuring PM10 and one measuring total suspended particulates (TSP).
 - ▶ These run for 24 hours every six days.
- ▶ Quarry must implement all reasonable and feasible avoidance and mitigation measures so particulate emissions from the quarry.

Environmental Monitoring - Air

- ▶ Air quality has improved or remained similar to those at previous meeting:
 - ▶ Annual average **PM10** levels measured with **HVAS** at 350 Cabbage Tree Road to end May 2025 is **14.4 $\mu\text{g}/\text{m}^3$** against 25 $\mu\text{g}/\text{m}^3$ criteria.
 - ▶ Annual average **TSP** levels measured with **HVAS** at 393 Cabbage Tree Road to end May 2025 is **25.2 $\mu\text{g}/\text{m}^3$** against 90 $\mu\text{g}/\text{m}^3$ criteria.
 - ▶ Annual average PM10 levels measured with **BAM at Sampson (RT1)** to end May 2025 is **9.7 $\mu\text{g}/\text{m}^3$** (was 9.9 $\mu\text{g}/\text{m}^3$ in April 2025) against 25 $\mu\text{g}/\text{m}^3$ criteria.
 - ▶ Annual average PM10 levels measured with **BAM at Hardes (RT2)** to end May 2025 is **5.7 $\mu\text{g}/\text{m}^3$** (was 5.8 $\mu\text{g}/\text{m}^3$ in April 2025) against 25 $\mu\text{g}/\text{m}^3$ criteria.
- ▶ Air quality model in assessment used an assumed annual average background of 16.6 $\mu\text{g}/\text{m}^3$.
- ▶ Data summarised online at: <https://www.newcastlesand.com.au/monthly-report/>

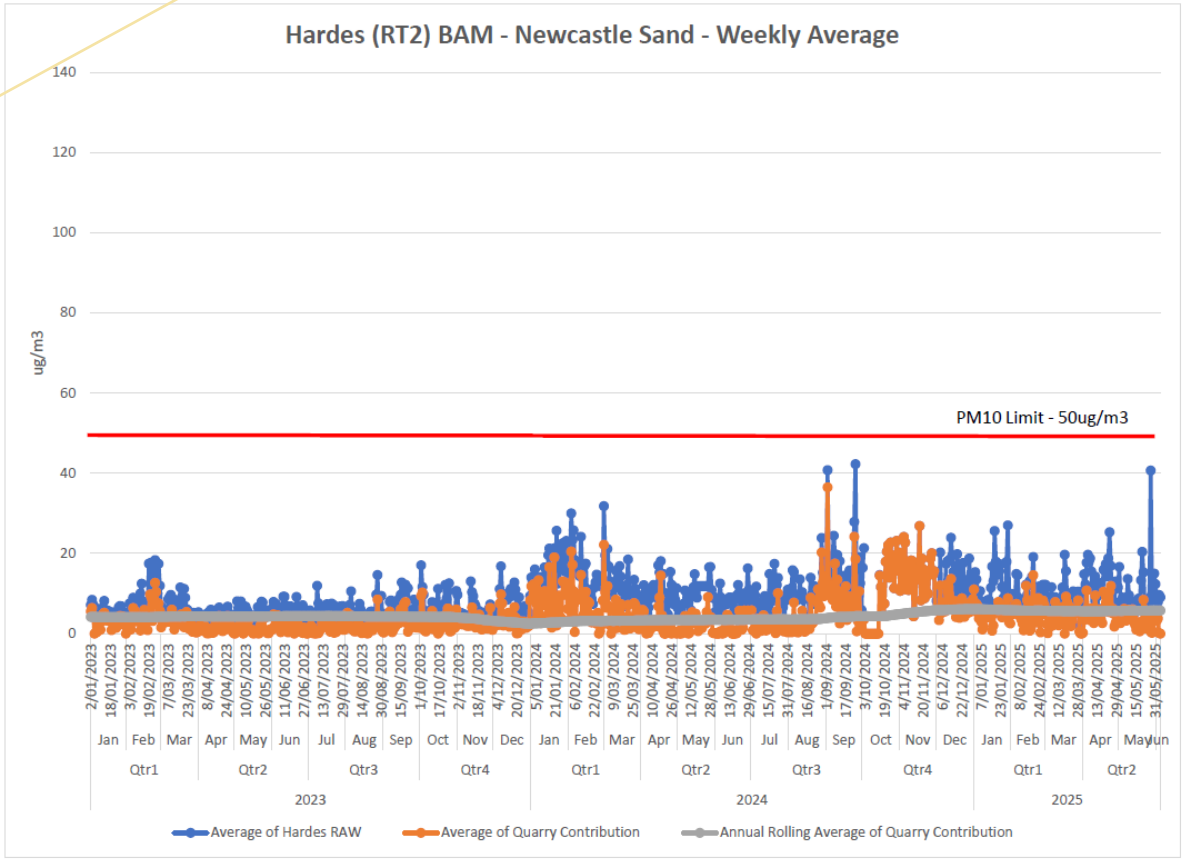
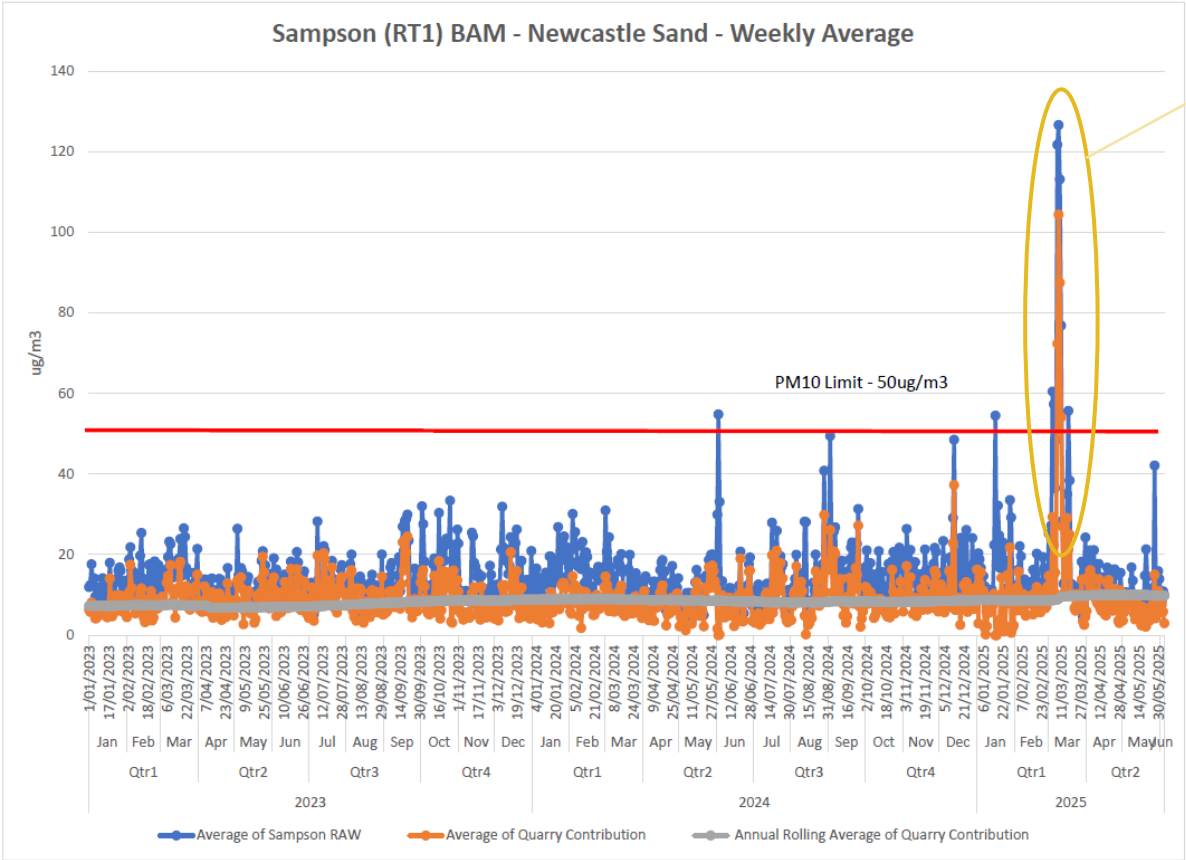
Environmental Monitoring - Air

HVAS 1 (PM10) paddock			
Sample Date	Concentration (µg/m³)	Comment	Rolling annual average Inclusive of extraordinary events (Criteria 25 µg/m³ excluding events)
1-Mar-25	15		9.3
7-Mar-25	10		8.9
13-Mar-25	6		8.9
19-Mar-25	6		9.1
25-Mar-25	8		9.3
31-Mar-25	9		9.5
6-Apr-25	16		9.5
12-Apr-25	8		8.8
18-Apr-25	16		8.9
24-Apr-25	13		7.9
30-Apr-25	8		7.0
6-May-25	3		6.8
12-May-25	3		7.8
18-May-25	6		9.3
24-May-25	8		11.0
30-May-25	14		14.0

HVAS 2 (TSP) sampson			
Sample Date	Concentration (µg/m³)	Comment	Rolling annual average Inclusive of extraordinary events (Criteria 90 µg/m³ excluding events)
1-Mar-25	27		22.1
7-Mar-25	18		21.8
13-Mar-25	28		22.1
19-Mar-25	28		21.6
25-Mar-25	15		21.1
31-Mar-25	24		21.6
6-Apr-25	38		21.4
12-Apr-25	18		19.6
18-Apr-25	30		19.8
24-Apr-25	27		18.3
30-Apr-25	14		16.8
6-May-25	23		17.4
12-May-25	7		16.0
18-May-25	12		19.0
24-May-25	18		22.5
30-May-25	27		27.0

Environmental Monitoring - Air

Spike outlined in next slide



Environmental Monitoring - Air

RT1 PM₁₀ Spike - March 2025 Summary

Key observations:

- ▶ Several spikes in air quality were noted on our real-time monitors, reaching levels above standard threshold values. However, these events were assessed and concluded:
 - ▶ The lab outlined strong easterly winds that carried dust toward the quarry rather than from it.
 - ▶ Heavy sea spray and humidity, which can contribute to naturally elevated readings and are known to artificially elevate PM₁₀ readings on BAMs.
 - ▶ Wet site conditions and no visible dust emissions confirmed by Quarry Manager.
 - ▶ Independent monitoring at the second location (Hardes BAM) did not register the same increases, indicating the quarry was not the source.

Southern Resource Area



Southern Resource Area



Southern Resource Area



March 2025 facing southeast - Area 8

Northern Resource Area



Northern Resource Area - Rehabilitation



June 2025 - facing north at Area 4B

Northern Resource Area - Rehabilitation



June 2025 - facing east at Area 7B

Questions?

More Information

- ▶ www.newcastlesand.com.au
- ▶ Quarry Manager - 0402 648 079
- ▶ info@newcastlesand.com.au